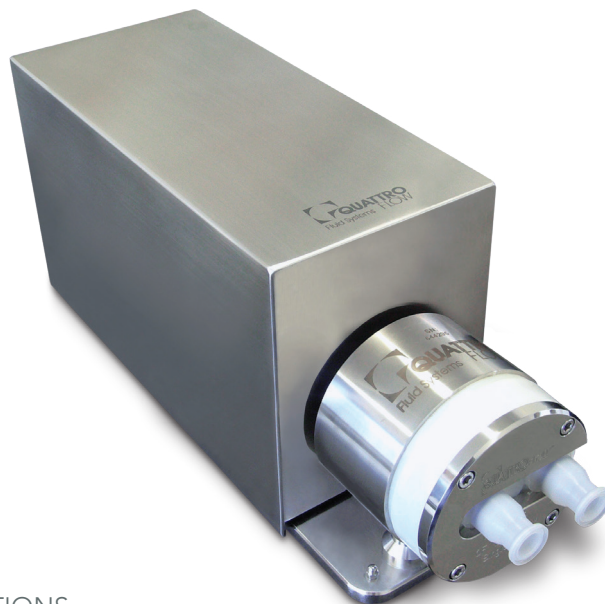


1200SU-M

SINGLE-USE PUMP WITH INJECTED MOLDED PUMP CHAMBER



SINGLE-USE SOLUTIONS FOR BIOPHARMACEUTICAL APPLICATIONS

Responding to the voice of the customer, Quattroflow® 1200SU Series Single-Use Four-Piston Diaphragm Pumps are now available with plastic pump chambers engineered with injected molded polyethylene (PE). Designed to be a more costeffective solution, these next generation pump chambers save you time and money, removing the need for extensive cleaning, sterilization and complex cleaning validation.

FEATURES & BENEFITS:

- About one-third lower in price than solid design polypropylene pump chambers
- Assembled under controlled and clean conditions
- Front connections: Standard size 3/4" TC (other TC and HB sizes are available)
- Max. pressure: 4 bar at 20°C (58 psi at 68°F)
- Range of flow: 6 – 1200 L/hr (1.6 – 317 gph) depending on the motor and drive unit
- Max. temperature: 50°C (122°F), not autoclavable
- Chamber diameter: 119 mm (4.69 inch)
- Gamma irradiation possible up to 50 kGy with 3 years shelf-life

PBT-Q-10012-F-01

© 2023 PSG®, a Dover company

Authorized PSG® Partner:



PSG Germany GmbH | Quattroflow
Hochstraße 150-152
47228 Duisburg, Germany
Tel: +49 (2065) 89205-0
Fax: +49 (2065) 89205-40
biotech@psgdover.com
psgdover.com/quattroflow

PSG® reserves the right to modify the information and illustrations contained in this document without prior notice. This is a non-contractual document.