



P.L. : 1013-D01

Effective
Replaces

September 2022
May 2022

PARTS LIST

PUMPS

G-FLO 11 S - G-FLO 15 S

G-FLO 25 S - G-FLO 40 S - G-FLO 50 S

G-FLO 65 S - G-FLO 65 HP

Keep this parts lists with Installation, Operation and Maintenance Instructions.

To order the required spare parts, indicate the desired Reference(s).

- ◆ Sets of parts or parts available to order.

CVT : FEP encapsulated FKM

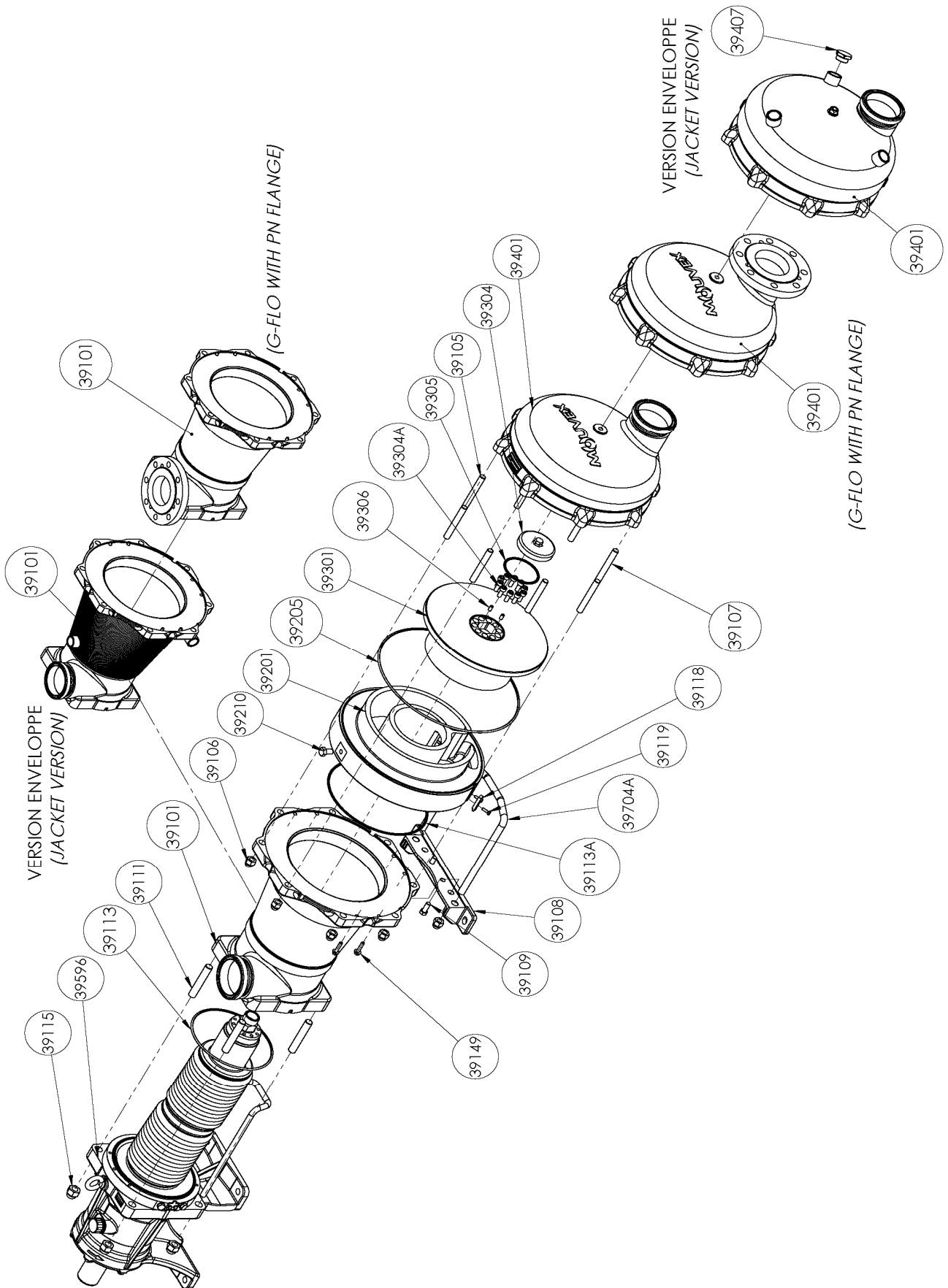
Z.I. la Plaine des Isles - 2 rue des Caillottes F-89000 AUXERRE - France

Tel : +33 (0)3 86 49 86 30 • Fax : +33 (0)3 86 49 87 17

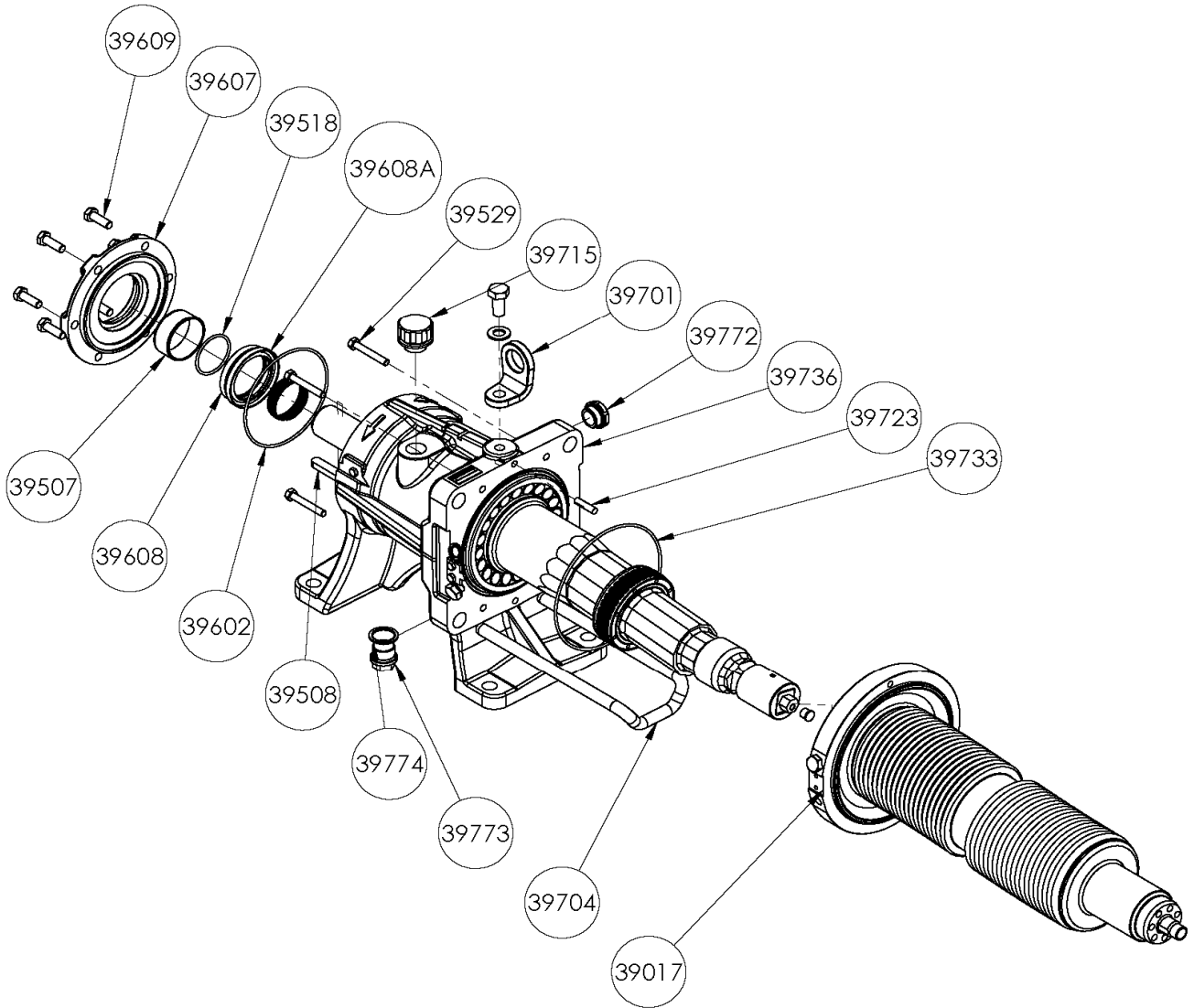
contact.mouvex@psgdover.com • www.mouvex.com

G-FLO 11 S - G-FLO 15 S - G-FLO 25 S - G-FLO 40 S - G-FLO 50 S - G-FLO 65 S - G-FLO 65 HP

Standard & Jacketed pump



G-FLO 11 S - G-FLO 15 S - G-FLO 25 S - G-FLO 40 S - G-FLO 50 S - G-FLO 65 S - G-FLO 65 HP
Transmission



G-FLO 11 S - G-FLO 15 S

* 1, 2, 4... : Quantity in equipment - (1), (2), (4)... : Quantity in kit

| Item | Available | Description | Qty* | Ref. | Maintenance kit | Wear part |
|--------|-----------|--|------|-----------|-----------------|-----------|
| 39100 | ◆ | MAIN BODY G FLO 11_15 S | 1 | AUX321072 | | |
| 39100 | ◆ | JACKETED MAIN BODY G FLO 11_15 S | 1 | AUX321084 | | |
| 39101 | | MAIN BODY | (1) | | | |
| 39108 | | FOOT | (1) | | | |
| 39109 | | SCREW | (2) | | | |
| 39124 | | PLUG (JACKETED PUMP) | (1) | | | |
| 39704A | | BRACKET | (1) | | | |
| 39110 | ◆ | SCREWS SET FOR MAIN BODY_FRONT COVER G_H FLO 11_15 S | 1 | AUX321098 | | |
| 39105 | | STUD | (6) | | | |
| 39106 | | BLIND NUT | (8) | | | |
| 39107 | | STUD | (2) | | | |
| 39111 | | STUD | (4) | | | |
| 39115 | | BLIND NUT | (4) | | | |
| 39149 | | SCREW | (4) | | | |
| 39410 | ◆ | KIT FLANGES MAIN BODY_FRONT COVER PN16 DN65 | 1 | AUX321145 | | |
| 39410 | ◆ | KIT FLANGES MAIN BODY_FRONT COVER PN20 DN65 | 1 | AUX321146 | | |
| 39136 | | SCREW | (6) | | | |
| 39148 | | ROD | (2) | | | |
| 39414 | | FLANGE | (2) | | | |
| 39200 | ◆ | SET CYLINDER_PISTON G_H FLO 11 S | 1 | AUX321201 | ■ | |
| 39200 | ◆ | SET CYLINDER_PISTON G_H FLO 15 S | 1 | AUX321099 | ■ | |
| 39118 | | INDEXER | (1) | | | |
| 39119 | | SCREW | (2) | | | |
| 39201 | | CYLINDER | (1) | | | ● |
| 39210 | | SCREW | (1) | | | |
| 39301 | | PISTON | (1) | | | ● |
| 39304 | ◆ | PISTON NUT G_H FLO 11_15 S | 1 | AUX242575 | | ● |
| 39304A | | SCREW | (7) | | | |
| 39304B | | SCREW | (3) | | | |
| 39206 | ◆ | SET OF CVT CE1935/2004 'O' RING SEALS G_H FLO 11_15 S | 1 | AUX321096 | ■ | |
| 39206 | ◆ | SET OF EPDM CE1935/2004 'O' RING SEALS G_H FLO 11_15 S | 1 | AUX321097 | ■ | |
| 39206 | ◆ | SET OF FKM CE1935/2004 'O' RING SEALS G_H FLO 11_15 S | 1 | AUX321095 | ■ | |
| 39113 | | SEAL | (1) | | | ● |
| 39113A | | SEAL | (1) | | | ● |
| 39205 | | SEAL | (1) | | | ● |
| 39305 | | SEAL | (1) | | | ● |
| 39306 | | SEAL | (1) | | | ● |
| 39401 | ◆ | FRONT COVER COMPLETE G FLO 11_15 S | 1 | AUX321043 | | |
| 39401 | ◆ | JACKETED FRONT COVER COMPLETE G FLO 11_15 S | 1 | AUX321055 | | |

G-FLO 11 S - G-FLO 15 S

* 1, 2, 4... : Quantity in equipment - (1), (2), (4)... : Quantity in kit

| Item | Available | Description | Qty* | Ref. | Maintenance kit | Wear part |
|--|-----------|--|------|-----------|-----------------|-----------|
| G FLO 11_15 S COMPLETE TRANSMISSION : | | | | | | |
| STANDARD | | | | | | |
| 39596 | ◆ | STANDARD | 1 | AUX321108 | ■ | ● |
| 39596* | ◆ | STANDARD_ECS | 1 | AUX321114 | ■ | ● |
| 39596* | ◆ | STANDARD_ECS_OIL LEVEL SENSOR | 1 | AUX321115 | ■ | ● |
| 39596* | ◆ | STANDARD_ATEX_ECS_OIL LEVEL SENSOR | 1 | AUX321288 | ■ | ● |
| WITH BELLOWS MONITORING SYSTEM (BMS) | | | | | | |
| 39596* | ◆ | BMS | 1 | AUX321371 | ■ | ● |
| 39596* | ◆ | BMS_ECS | 1 | AUX321373 | ■ | ● |
| 39596* | ◆ | BMS_ECS_OIL LEVEL SENSOR | 1 | AUX321374 | ■ | ● |
| WITH BELLOWS MONITORING SYSTEM (BMS) ATEX | | | | | | |
| 39596* | ◆ | BMS ATEX | 1 | AUX321372 | ■ | ● |
| 39596* | ◆ | BMS ATEX_ECS | 1 | AUX321375 | ■ | ● |
| 39596* | ◆ | BMS ATEX_ECS_OIL LEVEL SENSOR | 1 | AUX321376 | ■ | ● |
| 39008A** | ◆ | SET PLUGS_LIFTING EYE BOLTS G_H FLO 11_15 S | 1 | AUX321100 | | |
| 39008A** | ◆ | SET PLUGS_LIFTING EYE BOLTSE - ECS G_H FLO 11_15 S | 1 | AUX321113 | | |
| 39701 | | LIFTING EYE BOLTS | (1) | | | |
| 39701A | | SCREW | (1) | | | |
| 39701B | | WASHER | (1) | | | |
| 39715 | ◆ | BREATHER (EXCEPT ECS) | 1 | AUX239151 | | ● |
| 39772 | | OIL LEVEL INDICATOR (EXCEPT ECS) | (1) | | | |
| 39773 | | PLUG | (1) | | | |
| 39774 | | SEAL WASHER | (1) | | | ● |
| 39009A** | ◆ | BEARING GASKETS_RINGS SET G_H FLO 11_15 S | 1 | AUX321101 | | |
| 39498 | | BUSHING | (1) | | | |
| 39507 | | SEAL RING | (1) | | | ● |
| 39518 | | SEAL | (1) | | | ● |
| 39602 | | SEAL | (1) | | | |
| 39608 | | LIP SEAL | (1) | | | ● |
| 39608A | | LIP SEAL | (1) | | | ● |
| 39733 | | O-RING | (1) | | | ● |

* ECS : EASY CLEAN SYSTEM - BMS : BELLOWS MONITORING SYSTEM

** Only for Agreed distributors

G-FLO 25 S

* 1, 2, 4... : Quantity in equipment - (1), (2), (4)... : Quantity in kit

| Item | Available | Description | Qty* | Ref. | Maintenance kit | Wear part |
|--------|-----------|---|------|-----------|-----------------|-----------|
| 39100 | ◆ | MAIN BODY G FLO 25 S | 1 | AUX320959 | | |
| 39100 | ◆ | JACKETED MAIN BODY G FLO 25 S | 1 | AUX320972 | | |
| 39101 | | MAIN BODY | (1) | | | |
| 39108 | | FOOT | (1) | | | |
| 39109 | | SCREW | (2) | | | |
| 39124 | | PLUG (JACKETED PUMP) | (1) | | | |
| 39704A | | BRACKET | (1) | | | |
| 39110 | ◆ | SCREWS SET FOR MAIN BODY_FRONT COVER G_H FLO 25 S | 1 | AUX320981 | | |
| 39105 | | STUD | (6) | | | |
| 39106 | | BLIND NUT | (8) | | | |
| 39107 | | STUD | (2) | | | |
| 39111 | | STUD | (4) | | | |
| 39115 | | BLIND NUT | (4) | | | |
| 39149 | | SCREW | (4) | | | |
| 39410 | ◆ | KIT FLANGES MAIN BODY_FRONT COVER PN16 DN80 | 1 | AUX320667 | | |
| 39410 | ◆ | KIT FLANGES MAIN BODY_FRONT COVER PN20 DN80 | 1 | AUX320668 | | |
| 39136 | | SCREW | (6) | | | |
| 39148 | | ROD | (2) | | | |
| 39414 | | FLANGE | (2) | | | |
| 39200 | ◆ | SET CYLINDER_PISTON G_H FLO 25 S | 1 | AUX321006 | ■ | |
| 39118 | | INDEXER | (1) | | | |
| 39119 | | SCREW | (2) | | | |
| 39201 | | CYLINDER | (1) | | | ● |
| 39210 | | SCREW | (1) | | | |
| 39301 | | PISTON | (1) | | | ● |
| 39304 | ◆ | PISTON NUT G_H FLO 25 S | 1 | AUX242327 | | ● |
| 39304A | | SCREW | (7) | | | |
| 39304B | | SCREW | (4) | | | |
| 39206 | ◆ | SET OF CVT CE1935/2004 'O' RING SEALS G_H FLO 25 S | 1 | AUX320979 | ■ | |
| 39206 | ◆ | SET OF EPDM CE1935/2004 'O' RING SEALS G_H FLO 25 S | 1 | AUX320980 | ■ | |
| 39206 | ◆ | SET OF FKM CE1935/2004 'O' RING SEALS G_H FLO 25 S | 1 | AUX320978 | ■ | |
| 39113 | | SEAL | (1) | | | ● |
| 39113A | | SEAL | (1) | | | ● |
| 39205 | | SEAL | (1) | | | ● |
| 39305 | | SEAL | (1) | | | ● |
| 39306 | | SEAL | (1) | | | ● |
| 39401 | ◆ | FRONT COVER COMPLETE G FLO 25 S | 1 | AUX320924 | | |
| 39401 | ◆ | JACKETED FRONT COVER COMPLETE G FLO 25 S | 1 | AUX320953 | | |

G-FLO 25 S

* 1, 2, 4... : Quantity in equipment - (1), (2), (4)... : Quantity in kit

| Item | Available | Description | Qty* | Ref. | Maintenance kit | Wear part |
|--|-----------|--|------|-----------|-----------------|-----------|
| G FLO 25 S COMPLETE TRANSMISSION : | | | | | | |
| STANDARD | | | | | | |
| 39596 | ◆ | STANDARD | 1 | AUX320990 | ■ | ● |
| 39596* | ◆ | STANDARD_ECS | 1 | AUX320996 | ■ | ● |
| 39596* | ◆ | STANDARD_ECS_OIL LEVEL SENSOR | 1 | AUX320997 | ■ | ● |
| 39596* | ◆ | STANDARD_ATEX_ECS_OIL LEVEL SENSOR | 1 | AUX321287 | ■ | ● |
| WITH BELLOWS MONITORING SYSTEM (BMS) | | | | | | |
| 39596* | ◆ | BMS | 1 | AUX321334 | ■ | ● |
| 39596* | ◆ | BMS_ECS | 1 | AUX321336 | ■ | ● |
| 39596* | ◆ | BMS_ECS_OIL LEVEL SENSOR | 1 | AUX321337 | ■ | ● |
| WITH BELLOWS MONITORING SYSTEM (BMS) ATEX | | | | | | |
| 39596* | ◆ | BMS ATEX | 1 | AUX321335 | ■ | ● |
| 39596* | ◆ | BMS ATEX_ECS | 1 | AUX321338 | ■ | ● |
| 39596* | ◆ | BMS ATEX_ECS_OIL LEVEL SENSOR | 1 | AUX321339 | ■ | ● |
| 39008A** | ◆ | SET PLUGS_LIFTING EYE BOLTS | 1 | AUX320982 | | |
| 39008A** | ◆ | SET PLUGS_LIFTING EYE BOLTSE - ECS | 1 | AUX320995 | | |
| 39701 | | LIFTING EYE BOLTS | (1) | | | |
| 39701A | | SCREW | (1) | | | |
| 39701B | | WASHER | (1) | | | |
| 39715 | ◆ | BREATHER (EXCEPT ECS) | 1 | AUX239151 | | ● |
| 39772 | | OIL LEVEL INDICATOR (EXCEPT ECS) | (1) | | | |
| 39773 | | PLUG | (1) | | | |
| 39774 | | SEAL WASHER | (1) | | | ● |
| 39009A** | ◆ | BEARING GASKETS_RINGS SET G_H FLO 25 S | 1 | AUX320983 | | |
| 39498 | | BUSHING | (1) | | | |
| 39507 | | SEAL RING | (1) | | | ● |
| 39518 | | SEAL | (1) | | | ● |
| 39602 | | SEAL | (1) | | | |
| 39608 | | LIP SEAL | (1) | | | ● |
| 39608A | | LIP SEAL | (1) | | | ● |
| 39733 | | O-RING | (1) | | | ● |

* ECS : EASY CLEAN SYSTEM - BMS : BELLOWS MONITORING SYSTEM

** Only for Agreed distributors

G-FLO 40 S

* 1, 2, 4... : Quantity in equipment - (1), (2), (4)... : Quantity in kit

| Item | Available | Description | Qty* | Ref. | Maintenance kit | Wear part |
|--------|-----------|---|------|-----------|-----------------|-----------|
| 39100 | ◆ | MAIN BODY G FLO 40 S | 1 | AUX320672 | | |
| 39100 | ◆ | JACKETED MAIN BODY G FLO 40 S | 1 | AUX320753 | | |
| 39101 | | MAIN BODY | (1) | | | |
| 39108 | | FOOT | (1) | | | |
| 39109 | | SCREW | (2) | | | |
| 39124 | | PLUG (JACKETED PUMP) | (1) | | | |
| 39704A | | BRACKET | (1) | | | |
| 39110 | ◆ | SCREWS SET FOR MAIN BODY_FRONT COVER G_H FLO 40 S | 1 | AUX320661 | | |
| 39105 | | STUD | (6) | | | |
| 39106 | | BLIND NUT | (8) | | | |
| 39107 | | STUD | (2) | | | |
| 39111 | | STUD | (4) | | | |
| 39115 | | BLIND NUT | (4) | | | |
| 39149 | | SCREW | (4) | | | |
| 39410 | ◆ | KIT FLANGES MAIN BODY_FRONT COVER PN16 DN80 | 1 | AUX316971 | | |
| 39410 | ◆ | KIT FLANGES MAIN BODY_FRONT COVER PN20 DN80 | 1 | AUX316972 | | |
| 39136 | | SCREW | (6) | | | |
| 39148 | | ROD | (2) | | | |
| 39414 | | FLANGE | (2) | | | |
| 39200 | ◆ | SET CYLINDER_PISTON G_H FLO 40 S | 1 | AUX320662 | ■ | |
| 39118 | | INDEXER | (1) | | | |
| 39119 | | SCREW | (2) | | | |
| 39201 | | CYLINDER | (1) | | | ● |
| 39210 | | SCREW | (1) | | | |
| 39301 | | PISTON | (1) | | | ● |
| 39304 | ◆ | PISTON NUT G_H FLO 40 S | 1 | AUX240594 | | ● |
| 39304A | | SCREW | (8) | | | |
| 39306 | | SCREW | (2) | | | |
| 39206 | ◆ | SET OF CVT CE1935/2004 'O' RING SEALS G_H FLO 40 S | 1 | AUX320647 | ■ | |
| 39206 | ◆ | SET OF EPDM CE1935/2004 'O' RING SEALS G_H FLO 40 S | 1 | AUX320648 | ■ | |
| 39206 | ◆ | SET OF FKM CE1935/2004 'O' RING SEALS G_H FLO 40 S | 1 | AUX320646 | ■ | |
| 39113 | | SEAL | (1) | | | ● |
| 39113A | | SEAL | (1) | | | ● |
| 39205 | | SEAL | (1) | | | ● |
| 39305 | | SEAL | (2) | | | ● |
| 39401 | ◆ | FRONT COVER COMPLETE G FLO 40 S | 1 | AUX320640 | | |
| 39401 | ◆ | JACKETED FRONT COVER COMPLETE G FLO 40 S | 1 | AUX320741 | | |

G-FLO 40 S

* 1, 2, 4... : Quantity in equipment - (1), (2), (4)... : Quantity in kit

| Item | Available | Description | Qty* | Ref. | Maintenance kit | Wear part |
|----------|-----------|--|------|-----------|-----------------|-----------|
| | | G FLO 40 S COMPLETE TRANSMISSION : | | | | |
| | | STANDARD | | | | |
| 39596 | ◆ | STANDARD | 1 | AUX320243 | ■ | ● |
| 39596* | ◆ | STANDARD_ECS | 1 | AUX320867 | ■ | ● |
| 39596* | ◆ | STANDARD_ECS_OIL LEVEL SENSOR | 1 | AUX320868 | ■ | ● |
| 39596* | ◆ | STANDARD_ATEX_ECS_OIL LEVEL SENSOR | 1 | AUX321286 | ■ | ● |
| | | WITH BELLOWS MONITORING SYSTEM (BMS) | | | | |
| 39596* | ◆ | BMS | 1 | AUX321359 | ■ | ● |
| 39596* | ◆ | BMS_ECS | 1 | AUX321361 | ■ | ● |
| 39596* | ◆ | BMS_ECS_OIL LEVEL SENSOR | 1 | AUX321362 | ■ | ● |
| | | WITH BELLOWS MONITORING SYSTEM (BMS) ATEX | | | | |
| 39596* | ◆ | BMS ATEX | 1 | AUX321360 | ■ | ● |
| 39596* | ◆ | BMS ATEX_ECS | 1 | AUX321363 | ■ | ● |
| 39596* | ◆ | BMS ATEX_ECS_OIL LEVEL SENSOR | 1 | AUX321364 | ■ | ● |
| 39008A** | ◆ | SET PLUGS_LIFTING EYE BOLTS | 1 | AUX320673 | | |
| 39008A** | ◆ | SET PLUGS_LIFTING EYE BOLTSE - ECS | 1 | AUX320891 | | |
| 39701 | | LIFTING EYE BOLTS | (1) | | | |
| 39701A | | SCREW | (1) | | | |
| 39701B | | WASHER | (1) | | | |
| 39715 | ◆ | BREATHER (EXCEPT ECS) | 1 | AUX239151 | | ● |
| 39772 | | OIL LEVEL INDICATOR (EXCEPT ECS) | (1) | | | |
| 39773 | | PLUG | (1) | | | |
| 39774 | | SEAL WASHER | (1) | | | ● |
| 39009A** | ◆ | BEARING GASKETS_RINGS SET G_H FLO 40 S | 1 | AUX320246 | | |
| 39498 | | BUSHING | (1) | | | |
| 39507 | | SEAL RING | (1) | | | ● |
| 39518 | | SEAL | (1) | | | ● |
| 39602 | | SEAL | (1) | | | |
| 39608 | | LIP SEAL | (1) | | | ● |
| 39608A | | LIP SEAL | (1) | | | ● |
| 39733 | | O-RING | (1) | | | ● |

* ECS : EASY CLEAN SYSTEM - BMS : BELLOWS MONITORING SYSTEM

** Only for Agreed distributors

G-FLO 50 S

* 1, 2, 4... : Quantity in equipment - (1), (2), (4)... : Quantity in kit

| Item | Available | Description | Qty* | Ref. | Maintenance kit | Wear part |
|--------|-----------|---|------|-----------|-----------------|-----------|
| 39100 | ◆ | MAIN BODY G FLO 50 S | 1 | AUX320234 | | |
| 39100 | ◆ | JACKETED MAIN BODY G FLO 50 S | 1 | AUX320728 | | |
| 39101 | | MAIN BODY | (1) | | | |
| 39108 | | FOOT | (1) | | | |
| 39109 | | SCREW | (2) | | | |
| 39124 | | PLUG (JACKETED PUMP) | (1) | | | |
| 39704A | | BRACKET | (1) | | | |
| 39110 | ◆ | SCREWS SET FOR MAIN BODY_FRONT COVER G_H FLO 50 S | 1 | AUX320236 | | |
| 39105 | | STUD | (6) | | | |
| 39106 | | BLIND NUT | (8) | | | |
| 39107 | | STUD | (2) | | | |
| 39111 | | STUD | (4) | | | |
| 39115 | | BLIND NUT | (4) | | | |
| 39410 | ◆ | KIT FLANGES MAIN BODY_FRONT COVER PN16 DN100 | 1 | AUX319926 | | |
| 39410 | ◆ | KIT FLANGES MAIN BODY_FRONT COVER PN20 DN100 | 1 | AUX319958 | | |
| 39136 | | SCREW | (6) | | | |
| 39148 | | ROD | (2) | | | |
| 39414 | | FLANGE | (2) | | | |
| 39200 | ◆ | SET CYLINDER_PISTON G_H FLO 50 S | 1 | AUX320209 | ■ | |
| 39118 | | INDEXER | (1) | | | |
| 39119 | | SCREW | (2) | | | |
| 39201 | | CYLINDER | (1) | | | ● |
| 39210 | | SCREW | (1) | | | ● |
| 39301 | | PISTON | (1) | | | ● |
| 39304 | ◆ | | 1 | AUX240325 | | ● |
| 39304A | | SCREW | (8) | | | |
| 39306 | | SCREW | (2) | | | |
| 39206 | ◆ | SET OF CVT CE1935/2004 'O' RING SEALS G_H FLO 50 S | 1 | AUX320186 | ■ | |
| 39206 | ◆ | SET OF EPDM CE1935/2004 'O' RING SEALS G_H FLO 50 S | 1 | AUX320187 | ■ | |
| 39206 | ◆ | SET OF FKM CE1935/2004 'O' RING SEALS G_H FLO 50 S | 1 | AUX320185 | ■ | |
| 39113 | | SEAL | (1) | | | ● |
| 39113A | | SEAL | (1) | | | ● |
| 39205 | | SEAL | (1) | | | ● |
| 39305 | | SEAL | (2) | | | ● |
| 39401 | ◆ | FRONT COVER COMPLETE G FLO 50 S | 1 | AUX320235 | | |
| 39401 | ◆ | JACKETED FRONT COVER COMPLETE G FLO 50 S | 1 | AUX320716 | | |

G-FLO 50 S

* 1, 2, 4... : Quantity in equipment - (1), (2), (4)... : Quantity in kit

| Item | Available | Description | Qty* | Ref. | Maintenance kit | Wear part |
|----------|-----------|--|------|-----------|-----------------|-----------|
| | | G FLO 50 S COMPLETE TRANSMISSION : | | | | |
| | | STANDARD | | | | |
| 39596 | ◆ | STANDARD | 1 | AUX320115 | ■ | ● |
| 39596* | ◆ | STANDARD_ECS | 1 | AUX320877 | ■ | ● |
| 39596* | ◆ | STANDARD_ECS_OIL LEVEL SENSOR | 1 | AUX320878 | ■ | ● |
| 39596* | ◆ | STANDARD_ATEX_ECS_OIL LEVEL SENSOR | 1 | AUX321285 | ■ | ● |
| | | WITH BELLOWS MONITORING SYSTEM (BMS) | | | | |
| 39596* | ◆ | BMS | 1 | AUX321347 | ■ | ● |
| 39596* | ◆ | BMS_ECS | 1 | AUX321349 | ■ | ● |
| 39596* | ◆ | BMS_ECS_OIL LEVEL SENSOR | 1 | AUX321350 | ■ | ● |
| | | WITH BELLOWS MONITORING SYSTEM (BMS) ATEX | | | | |
| 39596* | ◆ | BMS ATEX | 1 | AUX321348 | ■ | ● |
| 39596* | ◆ | BMS ATEX_ECS | 1 | AUX321351 | ■ | ● |
| 39596* | ◆ | BMS ATEX_ECS_OIL LEVEL SENSOR | 1 | AUX321352 | ■ | ● |
| 39008A** | ◆ | SET PLUGS_LIFTING EYE BOLTS | 1 | AUX320673 | | |
| 39008A** | ◆ | SET PLUGS_LIFTING EYE BOLTSE - ECS | 1 | AUX320891 | | |
| 39701 | | LIFTING EYE BOLTS | (1) | | | |
| 39701A | | SCREW | (1) | | | |
| 39701B | | WASHER | (1) | | | |
| 39715 | ◆ | BREATHER (EXCEPT ECS) | 1 | AUX239151 | | ● |
| 39772 | | OIL LEVEL INDICATOR (EXCEPT ECS) | (1) | | | |
| 39773 | | PLUG | (1) | | | |
| 39774 | | SEAL WASHER | (1) | | | ● |
| 39009A** | ◆ | BEARING GASKETS_RINGS SET G_H FLO 50 S | 1 | AUX320116 | | |
| 39498 | | BUSHING | (1) | | | |
| 39507 | | SEAL RING | (1) | | | ● |
| 39518 | | SEAL | (1) | | | ● |
| 39602 | | SEAL | (1) | | | |
| 39608 | | LIP SEAL | (1) | | | ● |
| 39608A | | LIP SEAL | (1) | | | ● |
| 39733 | | O-RING | (1) | | | ● |

* ECS : EASY CLEAN SYSTEM - BMS : BELLOWS MONITORING SYSTEM

** Only for Agreed distributors

G-FLO 65 S

* 1, 2, 4... : Quantity in equipment - (1), (2), (4)... : Quantity in kit

| Item | Available | Description | Qty* | Ref. | Maintenance kit | Wear part |
|----------|-----------|---|------|-----------|-----------------|-----------|
| 39100 | ◆ | MAIN BODY G FLO 65 | 1 | AUX319927 | | |
| 39100 | ◆ | JACKETED MAIN BODY G FLO 65 | 1 | AUX320778 | | |
| 39101 | | MAIN BODY | (1) | | | |
| 39108 | | FOOT | (1) | | | |
| 39109 | | SCREW | (2) | | | |
| 39124 | | PLUG (JACKETED PUMP) | (1) | | | |
| 39704A | | BRACKET | (1) | | | |
| 39110 | ◆ | SCREWS SET FOR MAIN BODY_FRONT COVER G_H FLO 65 | 1 | AUX319937 | | |
| 39105 | | STUD | (6) | | | |
| 39106 | | BLIND NUT | (8) | | | |
| 39107 | | STUD | (2) | | | |
| 39111 | | STUD | (4) | | | |
| 39115 | | BLIND NUT | (4) | | | |
| 39410 | ◆ | KIT FLANGES MAIN BODY_FRONT COVER PN16 DN100 | 1 | AUX319926 | | |
| 39410 | ◆ | KIT FLANGES MAIN BODY_FRONT COVER PN20 DN100 | 1 | AUX319958 | | |
| 39136 | | SCREW | (6) | | | |
| 39148 | | ROD | (2) | | | |
| 39414 | | FLANGE | (2) | | | |
| 39200 | ◆ | SET CYLINDER_PISTON G_H FLO 65 S | 1 | AUX319913 | ■ | |
| 39118 | | INDEXER | (1) | | | |
| 39119 | | SCREW | (2) | | | |
| 39201 | | CYLINDER | (1) | | | ● |
| 39210 | | SCREW | (1) | | | |
| 39301 | | PISTON | (1) | | | ● |
| 39304 | ◆ | | 1 | AUX239099 | | ● |
| 39304A | | SCREW | (10) | | | |
| 39306 | | SCREW | (2) | | | |
| 39206 | ◆ | SET OF CVT CE1935/2004 'O' RING SEALS G_H FLO 65 | 1 | AUX319929 | ■ | |
| 39206 | ◆ | SET OF EPDM CE1935/2004 'O' RING SEALS G_H FLO 65 | 1 | AUX319950 | ■ | |
| 39206 | ◆ | SET OF FKM CE1935/2004 'O' RING SEALS G_H FLO 65 | 1 | AUX319945 | ■ | |
| 39113 | | SEAL | (1) | | | ● |
| 39113A | | SEAL | (1) | | | ● |
| 39205 | | SEAL | (1) | | | ● |
| 39305 | | SEAL | (2) | | | ● |
| 39401 | ◆ | FRONT COVER G FLO 65 | 1 | AUX319928 | | |
| 39401 | ◆ | JACKETED FRONT COVER COMPLETE G FLO 65 | 1 | AUX320765 | | |
| 39596 | ◆ | G FLO 65 COMPLETE TRANSMISSION : | 1 | AUX319662 | ■ | ● |
| 39599 | | TRANSMISSION | (1) | | | |
| 39008A** | ◆ | SET PLUGS_LIFTING EYE BOLTS | 1 | AUX319682 | | |
| 39701 | | LIFTING EYE BOLTS | (1) | | | |
| 39715 | ◆ | BREATHER | 1 | AUX239151 | | ● |
| 39772 | | OIL LEVEL INDICATOR | (1) | | | |
| 39773 | | PLUG | (1) | | | |
| 39774 | | SEAL WASHER | (1) | | | ● |
| 39009A** | ◆ | BEARING GASKETS_RINGS SET G_H FLO 65 S_HP | 1 | AUX319683 | | ● |
| 39507 | | INTERNAL RING | (1) | | | ● |
| 39516 | | CIRCLIPS | (1) | | | |
| 39518 | | O-RING FKM | (1) | | | ● |
| 39602 | | SEAL | (1) | | | |
| 39608 | | LIP SEAL | (1) | | | ● |
| 39608A | | LIP SEAL | (1) | | | ● |
| 39733 | | SEAL | (1) | | | ● |

** Only for Agreed distributors

G-FLO 65 HP

* 1, 2, 4... : Quantity in equipment - (1), (2), (4)... : Quantity in kit

| Item | Available | Description | Qty* | Ref. | Maintenance kit | Wear part |
|----------|-----------|---|------|-----------|-----------------|-----------|
| 39100 | ◆ | MAIN BODY G FLO 65 | 1 | AUX319927 | | |
| 39100 | ◆ | JACKETED MAIN BODY G FLO 65 | 1 | AUX320778 | | |
| 39101 | | MAIN BODY | (1) | | | |
| 39108 | | FOOT | (1) | | | |
| 39109 | | SCREW | (2) | | | |
| 39124 | | PLUG (JACKETED PUMP) | (1) | | | |
| 39704A | | BRACKET | (1) | | | |
| 39110 | ◆ | SCREWS SET FOR MAIN BODY_FRONT COVER G_H FLO 65 | 1 | AUX319937 | | |
| 39105 | | STUD | (6) | | | |
| 39106 | | BLIND NUT | (8) | | | |
| 39107 | | STUD | (2) | | | |
| 39111 | | STUD | (4) | | | |
| 39115 | | BLIND NUT | (4) | | | |
| 39410 | ◆ | KIT FLANGES MAIN BODY_FRONT COVER PN16 DN100 | 1 | AUX319926 | | |
| 39410 | ◆ | KIT FLANGES MAIN BODY_FRONT COVER PN20 DN100 | 1 | AUX319958 | | |
| 39136 | | SCREW | (6) | | | |
| 39148 | | ROD | (2) | | | |
| 39414 | | FLANGE | (2) | | | |
| 39200 | ◆ | SET CYLINDER_PISTON G_H FLO 65 HP | 1 | AUX319947 | ■ | |
| 39118 | | INDEXER | (1) | | | |
| 39119 | | SCREW | (2) | | | |
| 39201 | | CYLINDER | (1) | | | ● |
| 39210 | | SCREW | (1) | | | |
| 39301 | | PISTON | (1) | | | ● |
| 39304 | ◆ | | 1 | AUX239099 | | ● |
| 39304A | | SCREW | (10) | | | |
| 39306 | | SCREW | (2) | | | |
| 39206 | ◆ | SET OF CVT CE1935/2004 'O' RING SEALS G_H FLO 65 | 1 | AUX319929 | ■ | |
| 39206 | ◆ | SET OF EPDM CE1935/2004 'O' RING SEALS G_H FLO 65 | 1 | AUX319950 | ■ | |
| 39206 | ◆ | SET OF FKM CE1935/2004 'O' RING SEALS G_H FLO 65 | 1 | AUX319945 | ■ | |
| 39113 | | SEAL | (1) | | | ● |
| 39113A | | SEAL | (1) | | | ● |
| 39205 | | SEAL | (1) | | | ● |
| 39305 | | SEAL | (2) | | | ● |
| 39401 | ◆ | FRONT COVER G FLO 65 | 1 | AUX319928 | | |
| 39401 | ◆ | JACKETED FRONT COVER COMPLETE G FLO 65 | 1 | AUX320765 | | |
| 39596 | ◆ | G FLO 65 COMPLETE TRANSMISSION : | 1 | AUX319662 | ■ | ● |
| 39599 | | TRANSMISSION | (1) | | | |
| 39008A** | ◆ | SET PLUGS_LIFTING EYE BOLTS | 1 | AUX319682 | | |
| 39701 | | LIFTING EYE BOLTS | (1) | | | |
| 39715 | ◆ | BREATHER | 1 | AUX239151 | | ● |
| 39772 | | OIL LEVEL INDICATOR | (1) | | | |
| 39773 | | PLUG | (1) | | | |
| 39774 | | SEAL WASHER | (1) | | | ● |
| 39009A** | ◆ | BEARING GASKETS_RINGS SET G_H FLO 65 S_HP | 1 | AUX319683 | | ● |
| 39507 | | INTERNAL RING | (1) | | | ● |
| 39516 | | CIRCLIPS | (1) | | | |
| 39518 | | O-RING FKM | (1) | | | ● |
| 39602 | | SEAL | (1) | | | |
| 39608 | | LIP SEAL | (1) | | | ● |
| 39608A | | LIP SEAL | (1) | | | ● |
| 39733 | | SEAL | (1) | | | ● |

** Only for Agreed distributors