



P.L. : 1013-D01

Effective
Replaces

April 2023
September 2022

PARTS LIST

PUMPS

G-FLO 11 S - G-FLO 15 S
G-FLO 25 S - G-FLO 40 S - G-FLO 50 S
G-FLO 65 S - G-FLO 65 HP

Keep this parts lists with Installation, Operation and Maintenance Instructions.

To order the required spare parts, indicate the desired Reference(s).

- ◆ Sets of parts or parts available to order.

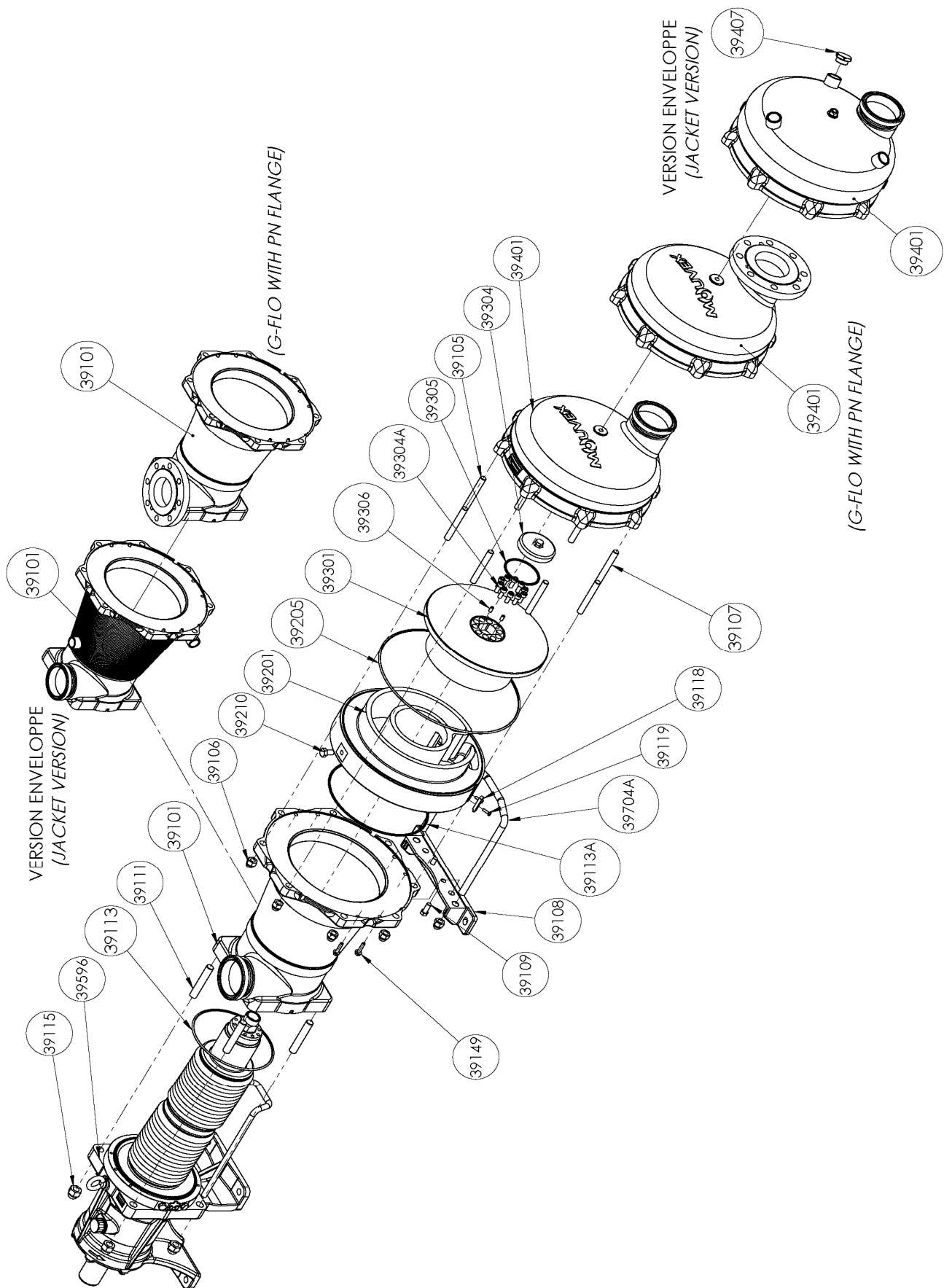
CVT : FEP encapsulated FKM

Z.I. la Plaine des Isles - 2 rue des Caillottes F-89000 AUXERRE - France

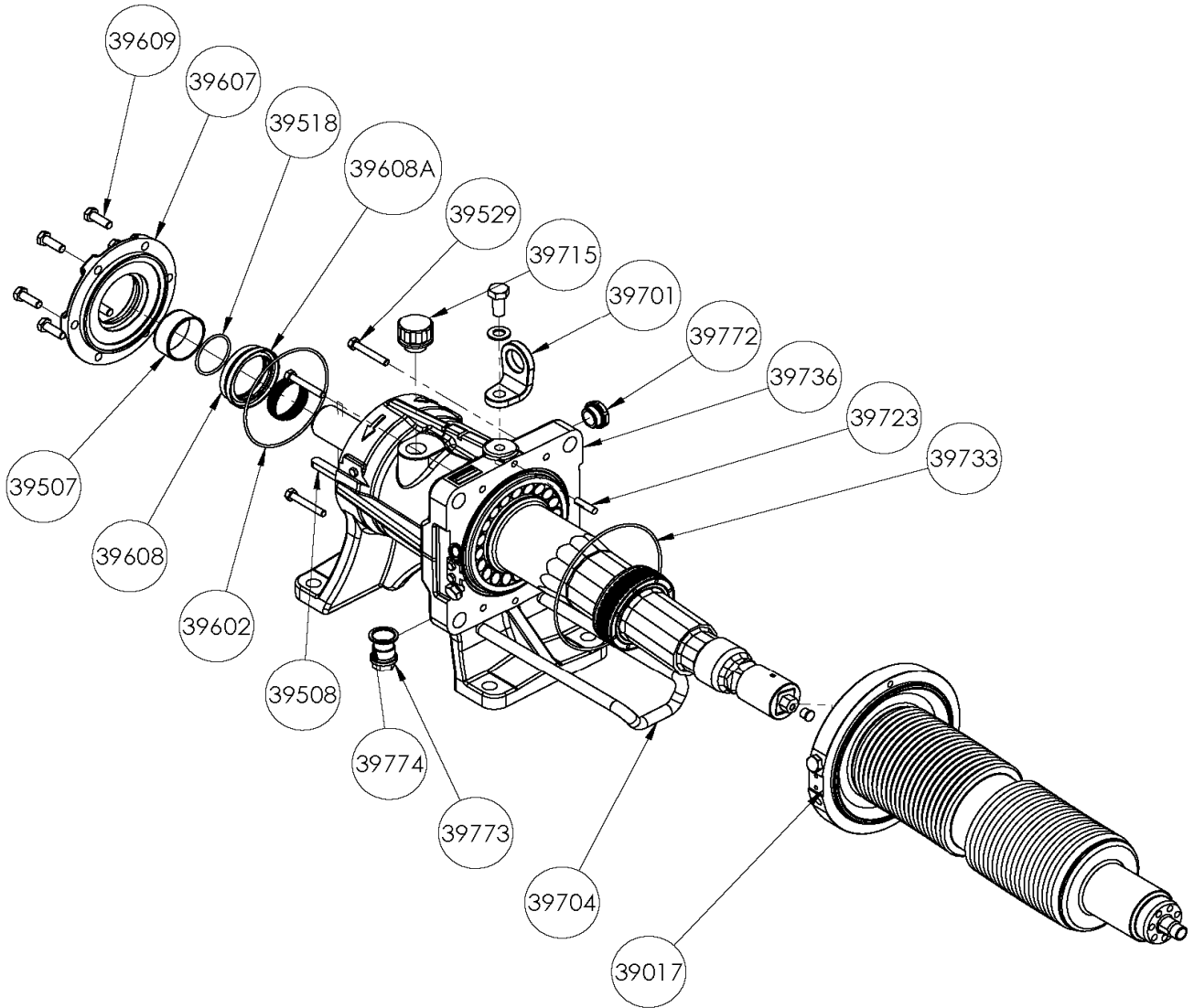
Tel : +33 (0)3 86 49 86 30 • Fax : +33 (0)3 86 49 87 17
contact.mouvex@psgdover.com • www.mouvex.com

G-FLO 11 S - G-FLO 15 S - G-FLO 25 S - G-FLO 40 S - G-FLO 50 S - G-FLO 65 S - G-FLO 65 HP

Standard & Jacketed pump



G-FLO 11 S - G-FLO 15 S - G-FLO 25 S - G-FLO 40 S - G-FLO 50 S - G-FLO 65 S - G-FLO 65 HP
Transmission



G-FLO 11 S - G-FLO 15 S

* 1, 2, 4... : Quantity in equipment - (1), (2), (4)... : Quantity in kit

Item	Available	Description	Qty*	Ref.	Maintenance kit	Wear part
39100	◆	MAIN BODY G FLO 11_15 S	1	AUX321072		
39100	◆	JACKETED MAIN BODY G FLO 11_15 S	1	AUX321084		
39101		MAIN BODY	(1)			
39108		FOOT	(1)			
39109		SCREW	(2)			
39124		PLUG (JACKETED PUMP)	(1)			
39704A		BRACKET	(1)			
39110	◆	SCREWS SET FOR MAIN BODY_FRONT COVER G_H FLO 11_15 S	1	AUX321098		
39105		STUD	(6)			
39106		BLIND NUT	(8)			
39107		STUD	(2)			
39111		STUD	(4)			
39115		BLIND NUT	(4)			
39149		SCREW	(4)			
39410	◆	KIT FLANGES MAIN BODY_FRONT COVER PN16 DN65	1	AUX321145		
39410	◆	KIT FLANGES MAIN BODY_FRONT COVER PN20 DN65	1	AUX321146		
39136		SCREW	(6)			
39148		ROD	(2)			
39414		FLANGE	(2)			
39200	◆	SET CYLINDER_PISTON G_H FLO 11 S	1	AUX321201	■	
39200	◆	SET CYLINDER_PISTON G_H FLO 15 S	1	AUX321099	■	
39118		INDEXER	(1)			
39119		SCREW	(2)			
39201		CYLINDER	(1)			●
39210		SCREW	(1)			
39301		PISTON	(1)			●
39304	◆	PISTON NUT G_H FLO 11_15 S	1	AUX242575		●
39304A		SCREW	(7)			
39304B		SCREW	(3)			
39206	◆	SET OF CVT CE1935/2004 'O' RING SEALS G_H FLO 11_15 S	1	AUX321096	■	
39206	◆	SET OF EPDM CE1935/2004 'O' RING SEALS G_H FLO 11_15 S	1	AUX321097	■	
39206	◆	SET OF FKM CE1935/2004 'O' RING SEALS G_H FLO 11_15 S	1	AUX321095	■	
39113		SEAL	(1)			●
39113A		SEAL	(1)			●
39205		SEAL	(1)			●
39305		SEAL	(1)			●
39306		SEAL	(1)			●
39401	◆	FRONT COVER COMPLETE G FLO 11_15 S	1	AUX321043		
39401	◆	JACKETED FRONT COVER COMPLETE G FLO 11_15 S	1	AUX321055		

G-FLO 11 S - G-FLO 15 S

* 1, 2, 4... : Quantity in equipment - (1), (2), (4)... : Quantity in kit

Item	Available	Description	Qty*	Ref.	Maintenance kit	Wear part
G FLO 11_15 S COMPLETE TRANSMISSION :						
STANDARD						
39596	◆	STANDARD	1	AUX321108	■	●
39596*	◆	STANDARD_ECS	1	AUX321114	■	●
39596*	◆	STANDARD_ECS_OIL LEVEL SENSOR	1	AUX321115	■	●
39596*	◆	STANDARD_ATEX_ECS_OIL LEVEL SENSOR	1	AUX321288	■	●
WITH BELLOWS MONITORING SYSTEM (BMS)						
39596*	◆	BMS	1	AUX321371	■	●
39596*	◆	BMS_ECS	1	AUX321373	■	●
39596*	◆	BMS_ECS_OIL LEVEL SENSOR	1	AUX321374	■	●
WITH BELLOWS MONITORING SYSTEM (BMS) ATEX						
39596*	◆	BMS ATEX	1	AUX321372	■	●
39596*	◆	BMS ATEX_ECS	1	AUX321375	■	●
39596*	◆	BMS ATEX_ECS_OIL LEVEL SENSOR	1	AUX321376	■	●
39008A**	◆	SET PLUGS_LIFTING EYE BOLTS G_H FLO 11_15 S	1	AUX321100		
39008A**	◆	SET PLUGS_LIFTING EYE BOLTSE - ECS G_H FLO 11_15 S	1	AUX321113		
39701		LIFTING EYE BOLTS	(1)			
39701A		SCREW	(1)			
39701B		WASHER	(1)			
39715	◆	BREATHER (EXCEPT ECS)	1	AUX239151		●
39772		OIL LEVEL INDICATOR (EXCEPT ECS)	(1)			
39773		PLUG	(1)			
39774		SEAL WASHER	(1)			●
39009A**	◆	BEARING GASKETS_RINGS SET G_H FLO 11_15 S	1	AUX321101		
39498		BUSHING	(1)			
39507		SEAL RING	(1)			●
39518		SEAL	(1)			●
39602		SEAL	(1)			
39608		LIP SEAL	(1)			●
39608A		LIP SEAL	(1)			●
39733		O-RING	(1)			●

* ECS : EASY CLEAN SYSTEM - BMS : BELLOWS MONITORING SYSTEM

** Only for Agreed distributors

G-FLO 25 S

* 1, 2, 4... : Quantity in equipment - (1), (2), (4)... : Quantity in kit

Item	Available	Description	Qty*	Ref.	Maintenance kit	Wear part
39100	◆	MAIN BODY G FLO 25 S	1	AUX320959		
39100	◆	JACKETED MAIN BODY G FLO 25 S	1	AUX320972		
39101		MAIN BODY	(1)			
39108		FOOT	(1)			
39109		SCREW	(2)			
39124		PLUG (JACKETED PUMP)	(1)			
39704A		BRACKET	(1)			
39110	◆	SCREWS SET FOR MAIN BODY_FRONT COVER G_H FLO 25 S	1	AUX320981		
39105		STUD	(6)			
39106		BLIND NUT	(8)			
39107		STUD	(2)			
39111		STUD	(4)			
39115		BLIND NUT	(4)			
39149		SCREW	(4)			
39410	◆	KIT FLANGES MAIN BODY_FRONT COVER PN16 DN80	1	AUX320667		
39410	◆	KIT FLANGES MAIN BODY_FRONT COVER PN20 DN80	1	AUX320668		
39136		SCREW	(6)			
39148		ROD	(2)			
39414		FLANGE	(2)			
39200	◆	SET CYLINDER_PISTON G_H FLO 25 S	1	AUX321006	■	
39118		INDEXER	(1)			
39119		SCREW	(2)			
39201		CYLINDER	(1)			●
39210		SCREW	(1)			
39301		PISTON	(1)			●
39304	◆	PISTON NUT G_H FLO 25 S	1	AUX242327		●
39304A		SCREW	(7)			
39304B		SCREW	(4)			
39206	◆	SET OF CVT CE1935/2004 'O' RING SEALS G_H FLO 25 S	1	AUX320979	■	
39206	◆	SET OF EPDM CE1935/2004 'O' RING SEALS G_H FLO 25 S	1	AUX320980	■	
39206	◆	SET OF FKM CE1935/2004 'O' RING SEALS G_H FLO 25 S	1	AUX320978	■	
39113		SEAL	(1)			●
39113A		SEAL	(1)			●
39205		SEAL	(1)			●
39305		SEAL	(1)			●
39306		SEAL	(1)			●
39401	◆	FRONT COVER COMPLETE G FLO 25 S	1	AUX320924		
39401	◆	JACKETED FRONT COVER COMPLETE G FLO 25 S	1	AUX320953		

G-FLO 25 S

* 1, 2, 4... : Quantity in equipment - (1), (2), (4)... : Quantity in kit

Item	Available	Description	Qty*	Ref.	Maintenance kit	Wear part
G FLO 25 S COMPLETE TRANSMISSION :						
STANDARD						
39596	◆	STANDARD	1	AUX320990	■	●
39596*	◆	STANDARD_ECS	1	AUX320996	■	●
39596*	◆	STANDARD_ECS_OIL LEVEL SENSOR	1	AUX320997	■	●
39596*	◆	STANDARD_ATEX_ECS_OIL LEVEL SENSOR	1	AUX321287	■	●
WITH BELLOWS MONITORING SYSTEM (BMS)						
39596*	◆	BMS	1	AUX321334	■	●
39596*	◆	BMS_ECS	1	AUX321336	■	●
39596*	◆	BMS_ECS_OIL LEVEL SENSOR	1	AUX321337	■	●
WITH BELLOWS MONITORING SYSTEM (BMS) ATEX						
39596*	◆	BMS ATEX	1	AUX321335	■	●
39596*	◆	BMS ATEX_ECS	1	AUX321338	■	●
39596*	◆	BMS ATEX_ECS_OIL LEVEL SENSOR	1	AUX321339	■	●
39008A**	◆	SET PLUGS_LIFTING EYE BOLTS	1	AUX320982		
39008A**	◆	SET PLUGS_LIFTING EYE BOLTSE - ECS	1	AUX320995		
39701		LIFTING EYE BOLTS	(1)			
39701A		SCREW	(1)			
39701B		WASHER	(1)			
39715	◆	BREATHER (EXCEPT ECS)	1	AUX239151		●
39772		OIL LEVEL INDICATOR (EXCEPT ECS)	(1)			
39773		PLUG	(1)			
39774		SEAL WASHER	(1)			●
39009A**	◆	BEARING GASKETS_RINGS SET G_H FLO 25 S	1	AUX320983		
39498		BUSHING	(1)			
39507		SEAL RING	(1)			●
39518		SEAL	(1)			●
39602		SEAL	(1)			
39608		LIP SEAL	(1)			●
39608A		LIP SEAL	(1)			●
39733		O-RING	(1)			●

* ECS : EASY CLEAN SYSTEM - BMS : BELLOWS MONITORING SYSTEM

** Only for Agreed distributors

G-FLO 40 S

* 1, 2, 4... : Quantity in equipment - (1), (2), (4)... : Quantity in kit

Item	Available	Description	Qty*	Ref.	Maintenance kit	Wear part
39100	◆	MAIN BODY G FLO 40 S	1	AUX320672		
39100	◆	JACKETED MAIN BODY G FLO 40 S	1	AUX320753		
39101		MAIN BODY	(1)			
39108		FOOT	(1)			
39109		SCREW	(2)			
39124		PLUG (JACKETED PUMP)	(1)			
39704A		BRACKET	(1)			
39110	◆	SCREWS SET FOR MAIN BODY_FRONT COVER G_H FLO 40 S	1	AUX320768		
39105		STUD	(6)			
39106		BLIND NUT	(8)			
39107		STUD	(2)			
39111		STUD	(4)			
39115		BLIND NUT	(4)			
39149		SCREW	(4)			
39410	◆	KIT FLANGES MAIN BODY_FRONT COVER PN16 DN80	1	AUX316971		
39410	◆	KIT FLANGES MAIN BODY_FRONT COVER PN20 DN80	1	AUX316972		
39136		SCREW	(6)			
39148		ROD	(2)			
39414		FLANGE	(2)			
39200	◆	SET CYLINDER_PISTON G_H FLO 40 S	1	AUX320662	■	
39118		INDEXER	(1)			
39119		SCREW	(2)			
39201		CYLINDER	(1)			●
39210		SCREW	(1)			
39301		PISTON	(1)			●
39304	◆	PISTON NUT G_H FLO 40 S	1	AUX240594		●
39304A		SCREW	(8)			
39306		SCREW	(2)			
39206	◆	SET OF CVT CE1935/2004 'O' RING SEALS G_H FLO 40 S	1	AUX320647	■	
39206	◆	SET OF EPDM CE1935/2004 'O' RING SEALS G_H FLO 40 S	1	AUX320648	■	
39206	◆	SET OF FKM CE1935/2004 'O' RING SEALS G_H FLO 40 S	1	AUX320646	■	
39113		SEAL	(1)			●
39113A		SEAL	(1)			●
39205		SEAL	(1)			●
39305		SEAL	(2)			●
39401	◆	FRONT COVER COMPLETE G FLO 40 S	1	AUX320640		
39401	◆	JACKETED FRONT COVER COMPLETE G FLO 40 S	1	AUX320741		

G-FLO 40 S

* 1, 2, 4... : Quantity in equipment - (1), (2), (4)... : Quantity in kit

Item	Available	Description	Qty*	Ref.	Maintenance kit	Wear part
		G FLO 40 S COMPLETE TRANSMISSION :				
		STANDARD				
39596	◆	STANDARD	1	AUX320243	■	●
39596*	◆	STANDARD_ECS	1	AUX320867	■	●
39596*	◆	STANDARD_ECS_OIL LEVEL SENSOR	1	AUX320868	■	●
39596*	◆	STANDARD_ATEX_ECS_OIL LEVEL SENSOR	1	AUX321286	■	●
		WITH BELLOWS MONITORING SYSTEM (BMS)				
39596*	◆	BMS	1	AUX321359	■	●
39596*	◆	BMS_ECS	1	AUX321361	■	●
39596*	◆	BMS_ECS_OIL LEVEL SENSOR	1	AUX321362	■	●
		WITH BELLOWS MONITORING SYSTEM (BMS) ATEX				
39596*	◆	BMS ATEX	1	AUX321360	■	●
39596*	◆	BMS ATEX_ECS	1	AUX321363	■	●
39596*	◆	BMS ATEX_ECS_OIL LEVEL SENSOR	1	AUX321364	■	●
39008A**	◆	SET PLUGS_LIFTING EYE BOLTS	1	AUX320673		
39008A**	◆	SET PLUGS_LIFTING EYE BOLTSE - ECS	1	AUX320891		
39701		LIFTING EYE BOLTS	(1)			
39701A		SCREW	(1)			
39701B		WASHER	(1)			
39715	◆	BREATHER (EXCEPT ECS)	1	AUX239151		●
39772		OIL LEVEL INDICATOR (EXCEPT ECS)	(1)			
39773		PLUG	(1)			
39774		SEAL WASHER	(1)			●
39009A**	◆	BEARING GASKETS_RINGS SET G_H FLO 40 S	1	AUX320246		
39498		BUSHING	(1)			
39507		SEAL RING	(1)			●
39518		SEAL	(1)			●
39602		SEAL	(1)			
39608		LIP SEAL	(1)			●
39608A		LIP SEAL	(1)			●
39733		O-RING	(1)			●

* ECS : EASY CLEAN SYSTEM - BMS : BELLOWS MONITORING SYSTEM

** Only for Agreed distributors

G-FLO 50 S

* 1, 2, 4... : Quantity in equipment - (1), (2), (4)... : Quantity in kit

Item	Available	Description	Qty*	Ref.	Maintenance kit	Wear part
39100	◆	MAIN BODY G FLO 50 S	1	AUX320234		
39100	◆	JACKETED MAIN BODY G FLO 50 S	1	AUX320728		
39101		MAIN BODY	(1)			
39108		FOOT	(1)			
39109		SCREW	(2)			
39124		PLUG (JACKETED PUMP)	(1)			
39704A		BRACKET	(1)			
39110	◆	SCREWS SET FOR MAIN BODY_FRONT COVER G_H FLO 50 S	1	AUX320236		
39105		STUD	(6)			
39106		BLIND NUT	(8)			
39107		STUD	(2)			
39111		STUD	(4)			
39115		BLIND NUT	(4)			
39410	◆	KIT FLANGES MAIN BODY_FRONT COVER PN16 DN100	1	AUX319926		
39410	◆	KIT FLANGES MAIN BODY_FRONT COVER PN20 DN100	1	AUX319958		
39136		SCREW	(6)			
39148		ROD	(2)			
39414		FLANGE	(2)			
39200	◆	SET CYLINDER_PISTON G_H FLO 50 S	1	AUX320209	■	
39118		INDEXER	(1)			
39119		SCREW	(2)			
39201		CYLINDER	(1)			●
39210		SCREW	(1)			●
39301		PISTON	(1)			●
39304	◆		1	AUX240325		●
39304A		SCREW	(8)			
39306		SCREW	(2)			
39206	◆	SET OF CVT CE1935/2004 'O' RING SEALS G_H FLO 50 S	1	AUX320186	■	
39206	◆	SET OF EPDM CE1935/2004 'O' RING SEALS G_H FLO 50 S	1	AUX320187	■	
39206	◆	SET OF FKM CE1935/2004 'O' RING SEALS G_H FLO 50 S	1	AUX320185	■	
39113		SEAL	(1)			●
39113A		SEAL	(1)			●
39205		SEAL	(1)			●
39305		SEAL	(2)			●
39401	◆	FRONT COVER COMPLETE G FLO 50 S	1	AUX320235		
39401	◆	JACKETED FRONT COVER COMPLETE G FLO 50 S	1	AUX320716		

G-FLO 50 S

* 1, 2, 4... : Quantity in equipment - (1), (2), (4)... : Quantity in kit

Item	Available	Description	Qty*	Ref.	Maintenance kit	Wear part
		G FLO 50 S COMPLETE TRANSMISSION :				
		STANDARD				
39596	◆	STANDARD	1	AUX320115	■	●
39596*	◆	STANDARD_ECS	1	AUX320877	■	●
39596*	◆	STANDARD_ECS_OIL LEVEL SENSOR	1	AUX320878	■	●
39596*	◆	STANDARD_ATEX_ECS_OIL LEVEL SENSOR	1	AUX321285	■	●
		WITH BELLOWS MONITORING SYSTEM (BMS)				
39596*	◆	BMS	1	AUX321347	■	●
39596*	◆	BMS_ECS	1	AUX321349	■	●
39596*	◆	BMS_ECS_OIL LEVEL SENSOR	1	AUX321350	■	●
		WITH BELLOWS MONITORING SYSTEM (BMS) ATEX				
39596*	◆	BMS ATEX	1	AUX321348	■	●
39596*	◆	BMS ATEX_ECS	1	AUX321351	■	●
39596*	◆	BMS ATEX_ECS_OIL LEVEL SENSOR	1	AUX321352	■	●
39008A**	◆	SET PLUGS_LIFTING EYE BOLTS	1	AUX320673		
39008A**	◆	SET PLUGS_LIFTING EYE BOLTSE - ECS	1	AUX320891		
39701		LIFTING EYE BOLTS	(1)			
39701A		SCREW	(1)			
39701B		WASHER	(1)			
39715	◆	BREATHER (EXCEPT ECS)	1	AUX239151		●
39772		OIL LEVEL INDICATOR (EXCEPT ECS)	(1)			
39773		PLUG	(1)			
39774		SEAL WASHER	(1)			●
39009A**	◆	BEARING GASKETS_RINGS SET G_H FLO 50 S	1	AUX320116		
39498		BUSHING	(1)			
39507		SEAL RING	(1)			●
39518		SEAL	(1)			●
39602		SEAL	(1)			
39608		LIP SEAL	(1)			●
39608A		LIP SEAL	(1)			●
39733		O-RING	(1)			●

* ECS : EASY CLEAN SYSTEM - BMS : BELLOWS MONITORING SYSTEM

** Only for Agreed distributors

G-FLO 65 S

* 1, 2, 4... : Quantity in equipment - (1), (2), (4)... : Quantity in kit

Item	Available	Description	Qty*	Ref.	Maintenance kit	Wear part
39100	◆	MAIN BODY G FLO 65	1	AUX319927		
39100	◆	JACKETED MAIN BODY G FLO 65	1	AUX320778		
39101		MAIN BODY	(1)			
39108		FOOT	(1)			
39109		SCREW	(2)			
39124		PLUG (JACKETED PUMP)	(1)			
39704A		BRACKET	(1)			
39110	◆	SCREWS SET FOR MAIN BODY_FRONT COVER G_H FLO 65	1	AUX319937		
39105		STUD	(6)			
39106		BLIND NUT	(8)			
39107		STUD	(2)			
39111		STUD	(4)			
39115		BLIND NUT	(4)			
39410	◆	KIT FLANGES MAIN BODY_FRONT COVER PN16 DN100	1	AUX319926		
39410	◆	KIT FLANGES MAIN BODY_FRONT COVER PN20 DN100	1	AUX319958		
39136		SCREW	(6)			
39148		ROD	(2)			
39414		FLANGE	(2)			
39200	◆	SET CYLINDER_PISTON G_H FLO 65 S	1	AUX319913	■	
39118		INDEXER	(1)			
39119		SCREW	(2)			
39201		CYLINDER	(1)			●
39210		SCREW	(1)			
39301		PISTON	(1)			●
39304	◆		1	AUX239099		●
39304A		SCREW	(10)			
39306		SCREW	(2)			
39206	◆	SET OF CVT CE1935/2004 'O' RING SEALS G_H FLO 65	1	AUX319929	■	
39206	◆	SET OF EPDM CE1935/2004 'O' RING SEALS G_H FLO 65	1	AUX319950	■	
39206	◆	SET OF FKM CE1935/2004 'O' RING SEALS G_H FLO 65	1	AUX319945	■	
39113		SEAL	(1)			●
39113A		SEAL	(1)			●
39205		SEAL	(1)			●
39305		SEAL	(2)			●
39401	◆	FRONT COVER G FLO 65	1	AUX319928		
39401	◆	JACKETED FRONT COVER COMPLETE G FLO 65	1	AUX320765		
39596	◆	G FLO 65 COMPLETE TRANSMISSION :	1	AUX319662	■	●
39599		TRANSMISSION	(1)			
39008A**	◆	SET PLUGS_LIFTING EYE BOLTS	1	AUX319682		
39701		LIFTING EYE BOLTS	(1)			
39715	◆	BREATHER	1	AUX239151		●
39772		OIL LEVEL INDICATOR	(1)			
39773		PLUG	(1)			
39774		SEAL WASHER	(1)			●
39009A**	◆	BEARING GASKETS_RINGS SET G_H FLO 65 S_HP	1	AUX319683		●
39507		INTERNAL RING	(1)			●
39516		CIRCLIPS	(1)			
39518		O-RING FKM	(1)			●
39602		SEAL	(1)			
39608		LIP SEAL	(1)			●
39608A		LIP SEAL	(1)			●
39733		SEAL	(1)			●

** Only for Agreed distributors

G-FLO 65 HP

* 1, 2, 4... : Quantity in equipment - (1), (2), (4)... : Quantity in kit

Item	Available	Description	Qty*	Ref.	Maintenance kit	Wear part
39100	◆	MAIN BODY G FLO 65	1	AUX319927		
39100	◆	JACKETED MAIN BODY G FLO 65	1	AUX320778		
39101		MAIN BODY	(1)			
39108		FOOT	(1)			
39109		SCREW	(2)			
39124		PLUG (JACKETED PUMP)	(1)			
39704A		BRACKET	(1)			
39110	◆	SCREWS SET FOR MAIN BODY_FRONT COVER G_H FLO 65	1	AUX319937		
39105		STUD	(6)			
39106		BLIND NUT	(8)			
39107		STUD	(2)			
39111		STUD	(4)			
39115		BLIND NUT	(4)			
39410	◆	KIT FLANGES MAIN BODY_FRONT COVER PN16 DN100	1	AUX319926		
39410	◆	KIT FLANGES MAIN BODY_FRONT COVER PN20 DN100	1	AUX319958		
39136		SCREW	(6)			
39148		ROD	(2)			
39414		FLANGE	(2)			
39200	◆	SET CYLINDER_PISTON G_H FLO 65 HP	1	AUX319947	■	
39118		INDEXER	(1)			
39119		SCREW	(2)			
39201		CYLINDER	(1)			●
39210		SCREW	(1)			
39301		PISTON	(1)			●
39304	◆		1	AUX239099		●
39304A		SCREW	(10)			
39306		SCREW	(2)			
39206	◆	SET OF CVT CE1935/2004 'O' RING SEALS G_H FLO 65	1	AUX319929	■	
39206	◆	SET OF EPDM CE1935/2004 'O' RING SEALS G_H FLO 65	1	AUX319950	■	
39206	◆	SET OF FKM CE1935/2004 'O' RING SEALS G_H FLO 65	1	AUX319945	■	
39113		SEAL	(1)			●
39113A		SEAL	(1)			●
39205		SEAL	(1)			●
39305		SEAL	(2)			●
39401	◆	FRONT COVER G FLO 65	1	AUX319928		
39401	◆	JACKETED FRONT COVER COMPLETE G FLO 65	1	AUX320765		
39596	◆	G FLO 65 COMPLETE TRANSMISSION :	1	AUX319662	■	●
39599		TRANSMISSION	(1)			
39008A**	◆	SET PLUGS_LIFTING EYE BOLTS	1	AUX319682		
39701		LIFTING EYE BOLTS	(1)			
39715	◆	BREATHER	1	AUX239151		●
39772		OIL LEVEL INDICATOR	(1)			
39773		PLUG	(1)			
39774		SEAL WASHER	(1)			●
39009A**	◆	BEARING GASKETS_RINGS SET G_H FLO 65 S_HP	1	AUX319683		●
39507		INTERNAL RING	(1)			●
39516		CIRCLIPS	(1)			
39518		O-RING FKM	(1)			●
39602		SEAL	(1)			
39608		LIP SEAL	(1)			●
39608A		LIP SEAL	(1)			●
39733		SEAL	(1)			●

** Only for Agreed distributors