



P.L. : 1013-H02

Effective
Replaces

July 2024
June 2023

PARTS LIST
PUMPS
H-FLO 6 S - H-FLO 8 S

Keep this parts lists with Installation, Operation and Maintenance Instructions.

To order the required spare parts, indicate the desired Reference(s).

- ◆ Sets of parts or parts available to order.

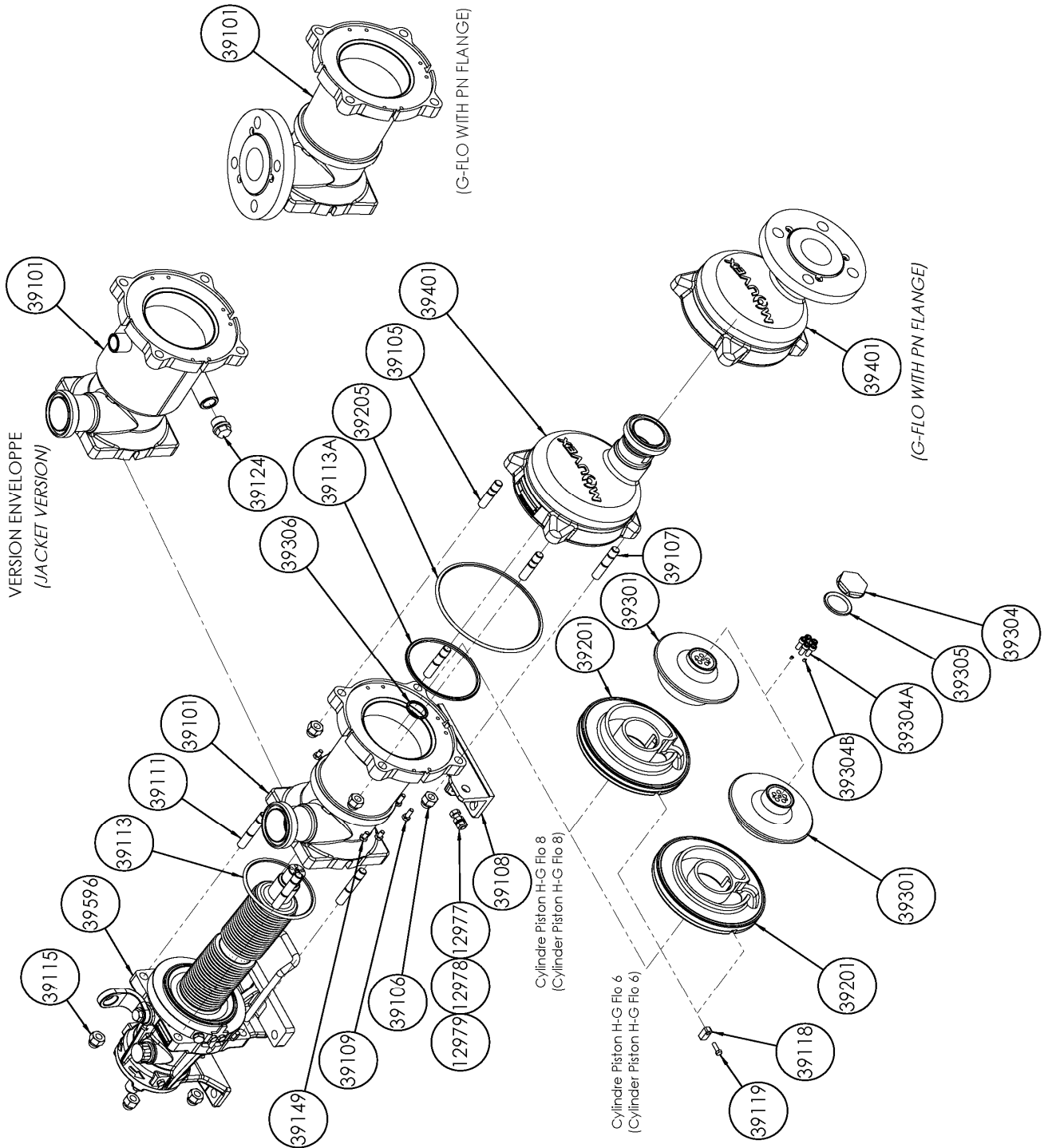
CVT : FEP encapsulated FKM

Z.I. la Plaine des Isles - 2 rue des Caillottes F-89000 AUXERRE - France

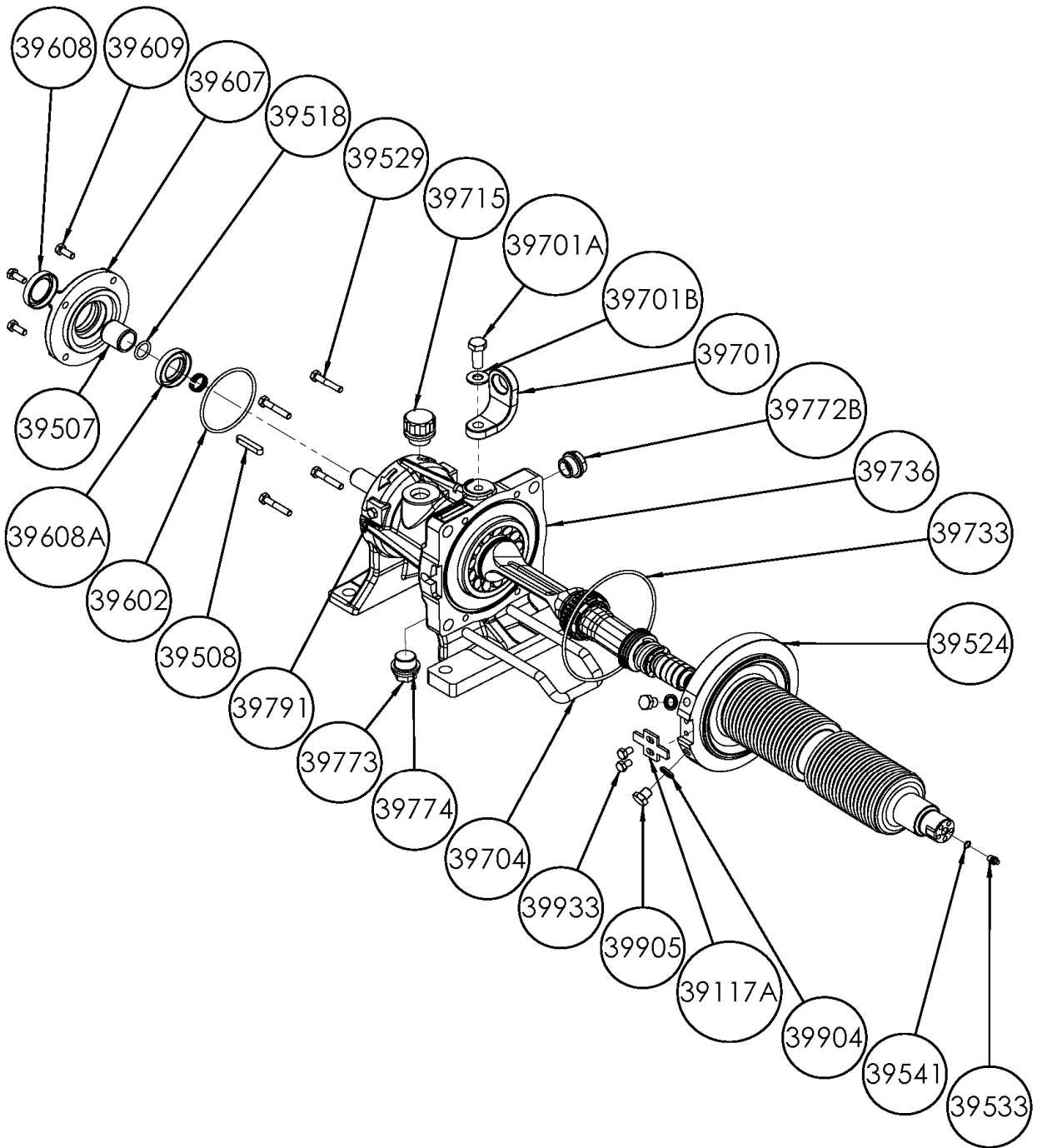
Tel : +33 (0)3 86 49 86 30 • Fax : +33 (0)3 86 49 87 17
contact.mouvex@psgdover.com • www.mouvex.com

H-FLO 6 S - H-FLO 8 S

Standard & Jacketed pump



H-FLO 6 S - H-FLO 8 S
Transmission



H-FLO 6 S - H-FLO 8 S

* 1, 2, 4... : Quantity in equipment - (1), (2), (4)... : Quantity in kit

Item	Available	Description	Qty*	Ref.	Maintenance kit	Wear part
39100	◆	MAIN BODY H FLO 6_8 - CONNECTIONS CLAMP ASME-BPE	1	AUX321662		
39100	◆	MAIN BODY H FLO 6_8 - CONNECTIONS CLAMP ISO 2852	1	AUX321663		
39100	◆	MAIN BODY H FLO 6_8 - CONNECTIONS DIN 11851	1	AUX321661		
39100	◆	MAIN BODY H FLO 6_8 - CONNECTIONS SMS	1	AUX321660		
39100	◆	MAIN BODY H FLO 6_8 - CONNECTIONS DIN 11864	1	AUX321664		
39100	◆	JACKETED MAIN BODY H FLO 6_8 - CONNECTIONS CLAMP ASME-BPE	1	AUX321674		
39100	◆	JACKETED MAIN BODY H FLO 6_8 - CONNECTIONS CLAMP ISO 2852	1	AUX321675		
39100	◆	JACKETED MAIN BODY H FLO 6_8 - CONNECTIONS DIN 11851	1	AUX321673		
39100	◆	JACKETED MAIN BODY H FLO 6_8 - CONNECTIONS SMS	1	AUX321672		
39100	◆	JACKETED MAIN BODY H FLO 6_8 - CONNECTIONS DIN 11864	1	AUX321676		
39100	◆	POLISH MAIN BODY H FLO 6_8 - CONNECTIONS CLAMP ASME-BPE	1	AUX321685		
39100	◆	POLISH MAIN BODY H FLO 6_8 - CONNECTIONS CLAMP ISO 2852	1	AUX321686		
39100	◆	POLISH MAIN BODY H FLO 6_8 - CONNECTIONS DIN 11851	1	AUX321684		
39100	◆	POLISH MAIN BODY H FLO 6_8 - CONNECTIONS SMS	1	AUX321683		
39100	◆	POLISH MAIN BODY H FLO 6_8 - CONNECTIONS DIN 11864	1	AUX321687		
39101		MAIN BODY	(1)			
39108		FOOT	(1)			
39109		SCREW	(2)			
39124		PLUG (JACKETED PUMP)	(1)			
39110	◆	SCREWS SET FOR MAIN BODY_FRONT COVER G_H FLO 6_8 S	1	AUX321691		
39105		STUD	(2)			
39106		BLIND NUT	(4)			
39107		STUD	(2)			
39111		STUD	(4)			
39115		BLIND NUT	(4)			
39149		SCREW	(4)			
39200	◆	SET CYLINDER_PISTON G_H FLO 6 S	1	AUX321641	■	
39200	◆	SET CYLINDER_PISTON G_H FLO 8 S	1	AUX321642	■	
39118		INDEXER	(1)			
39119		SCREW	(1)			
39201		CYLINDER	(1)			●
39301		PISTON	(1)			●
39304	◆	PISTON NUT G_H FLO 6_8 S	1	AUX244083		●
39304A		SCREW	(5)			
39304B		SCREW	(2)			
39206	◆	SET OF CVT CE1935/2004 'O' RING SEALS G_H FLO 6_8 S	1	AUX321689	■	
39206	◆	SET OF EPDM CE1935/2004 'O' RING SEALS G_H FLO 6_8 S	1	AUX321690	■	
39206	◆	SET OF FKM CE1935/2004 'O' RING SEALS G_H FLO 6_8 S	1	AUX321688	■	
39113		SEAL	(1)			●
39113A		SEAL	(1)			●
39205		SEAL	(1)			●
39305		SEAL	(1)			●
39306		SEAL	(1)			●
39401	◆	FRONT COVER H FLO 6_8 - CONNECTION CLAMP ASME BPE-2009	1	AUX321645		
39401	◆	FRONT COVER H FLO 6_8 - CONNECTION DIN11864	1	AUX321647		
39401	◆	FRONT COVER H FLO 6_8 - CONNECTION CLAMP ISO 2852	1	AUX321646		
39401	◆	FRONT COVER H FLO 6_8 - CONNECTION DIN11851	1	AUX321644		
39401	◆	FRONT COVER H FLO 6_8 - CONNECTION SMS	1	AUX321643		
39401	◆	POLISH FRONT COVER H FLO 6_8 - CONNECTIONS CLAMP ASME-BPE	1	AUX321651		
39401	◆	POLISH FRONT COVER H FLO 6_8 - CONNECTIONS CLAMP ISO 2852	1	AUX321652		
39401	◆	POLISH FRONT COVER H FLO 6_8 - CONNECTIONS DIN 11851	1	AUX321650		
39401	◆	POLISH FRONT COVER H FLO 6_8 - CONNECTIONS SMS	1	AUX321649		
39401	◆	POLISH FRONT COVER H FLO 6_8 - CONNECTIONS DIN 11864	1	AUX321653		

H-FLO 6 S - H-FLO 8 S

* 1, 2, 4... : Quantity in equipment - (1), (2), (4)... : Quantity in kit

Item	Available	Description	Qty*	Ref.	Maintenance kit	Wear part
		H FLO 6_8 S COMPLETE TRANSMISSION :				
		STANDARD				
39596	◆	STANDARD	1	AUX321730	■	●
39596*	◆	STANDARD_ECS	1	AUX321733	■	●
39596*	◆	STANDARD_ECS_OIL LEVEL SENSOR	1	AUX321734	■	●
39596*	◆	STANDARD_ATEX_ECS_OIL LEVEL SENSOR	1	AUX321735	■	●
		WITH BELLOWS MONITORING SYSTEM (BMS)				
39596*	◆	BMS	1	AUX321731	■	●
39596*	◆	BMS_ECS	1	AUX321736	■	●
39596*	◆	BMS_ECS_OIL LEVEL SENSOR	1	AUX321737	■	●
		WITH BELLOWS MONITORING SYSTEM (BMS) ATEX				
39596*	◆	BMS ATEX	1	AUX321732	■	●
39596*	◆	BMS ATEX_ECS	1	AUX321738	■	●
39596*	◆	BMS ATEX_ECS_OIL LEVEL SENSOR	1	AUX321739	■	●
39009A	◆	BEARING GASKETS_RINGS SET G_H FLO 6_8 S	1	AUX321715		
39498		BUSHING	(1)			
39507		SEAL RING	(1)			●
39518		SEAL	(1)			●
39602		SEAL	(1)			
39608		LIP SEAL	(1)			●
39608A		LIP SEAL	(1)			●
		BELLOWS REPLACEMENT KIT G_H FLO 6_8 S :				
		STANDARD				
39017A	◆	SET BELLOWS	1	AUX321785	■	
39017		BELLOWS	(1)			
39524		PLUG	(1)			
39533		SEAL	(1)			
39541		SEAL	(1)			
39023		SET PLUGS FOR BELLOWS	1			
39533A		SCREW	(1)			
39733		SEAL	(1)			
39602		O-RING	(1)			
39017A	◆	WITH BELLOWS MONITORING SYSTEM (BMS)	1	AUX321786	■	
39017A	◆	WITH BELLOWS MONITORING SYSTEM (BMS) ATEX	1	AUX321787	■	
39017		SET BELLOWS WITH BMS	(1)			
39519		BUSHING	(1)			
39522		SEAL RING	(1)			
39524		BELLOWS	(1)			
39533		PLUG	(1)			
39541		SEAL	(1)			
39023		SET BELLOWS BMS	(1)			
39533A		SCREW	(1)			
39733		SEAL	(1)			
39602		O-RING	(1)			
39585	◆	BELLOW MOUNTING TOOLS G_H FLO 6_8	1	AUX321784		
39749	◆	KIT EASY CLEAN SYSTEM (ECS) G_H FLO 6_8	1	AUX321711		
39748	◆	SET SEAL FOR ECS G_H FLO 6_8	1	AUX321709		

* ECS : EASY CLEAN SYSTEM - BMS : BELLOWS MONITORING SYSTEM