



P.L. : 1013-D02

Effective
Replaces

January 2026
July 2024

PARTS LIST
PUMPS
G-FLO 6 S_HT - G-FLO 8 S_HT

Keep this parts lists with Installation, Operation and Maintenance Instructions.

To order the required spare parts, indicate the desired Reference(s).

- ◆ Sets of parts or parts available to order.

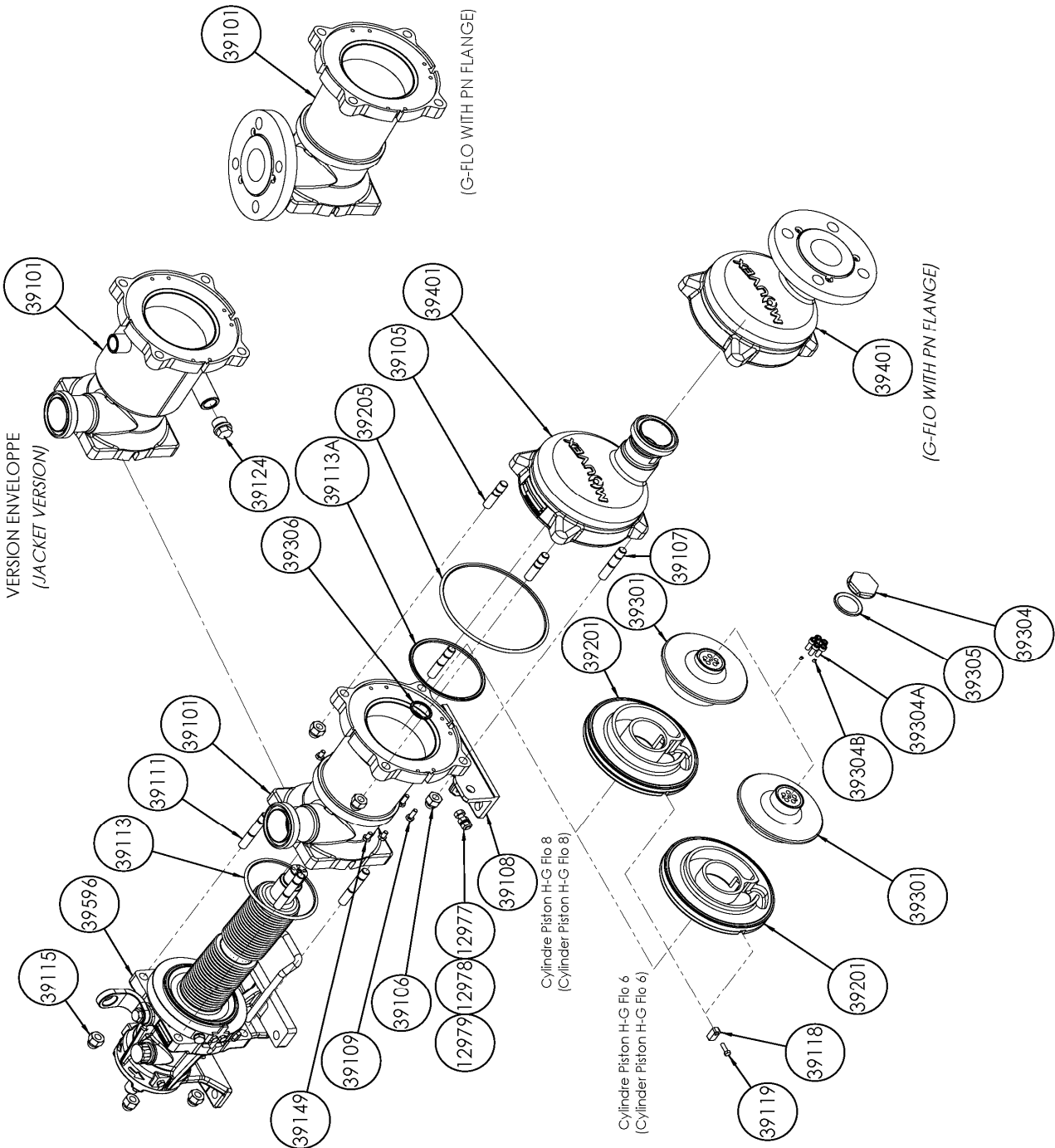
CVT : FEP encapsulated FKM

Z.I. la Plaine des Isles - 2 rue des Caillottes F-89000 AUXERRE - France

Tél : +33 (0)3 86 49 86 30

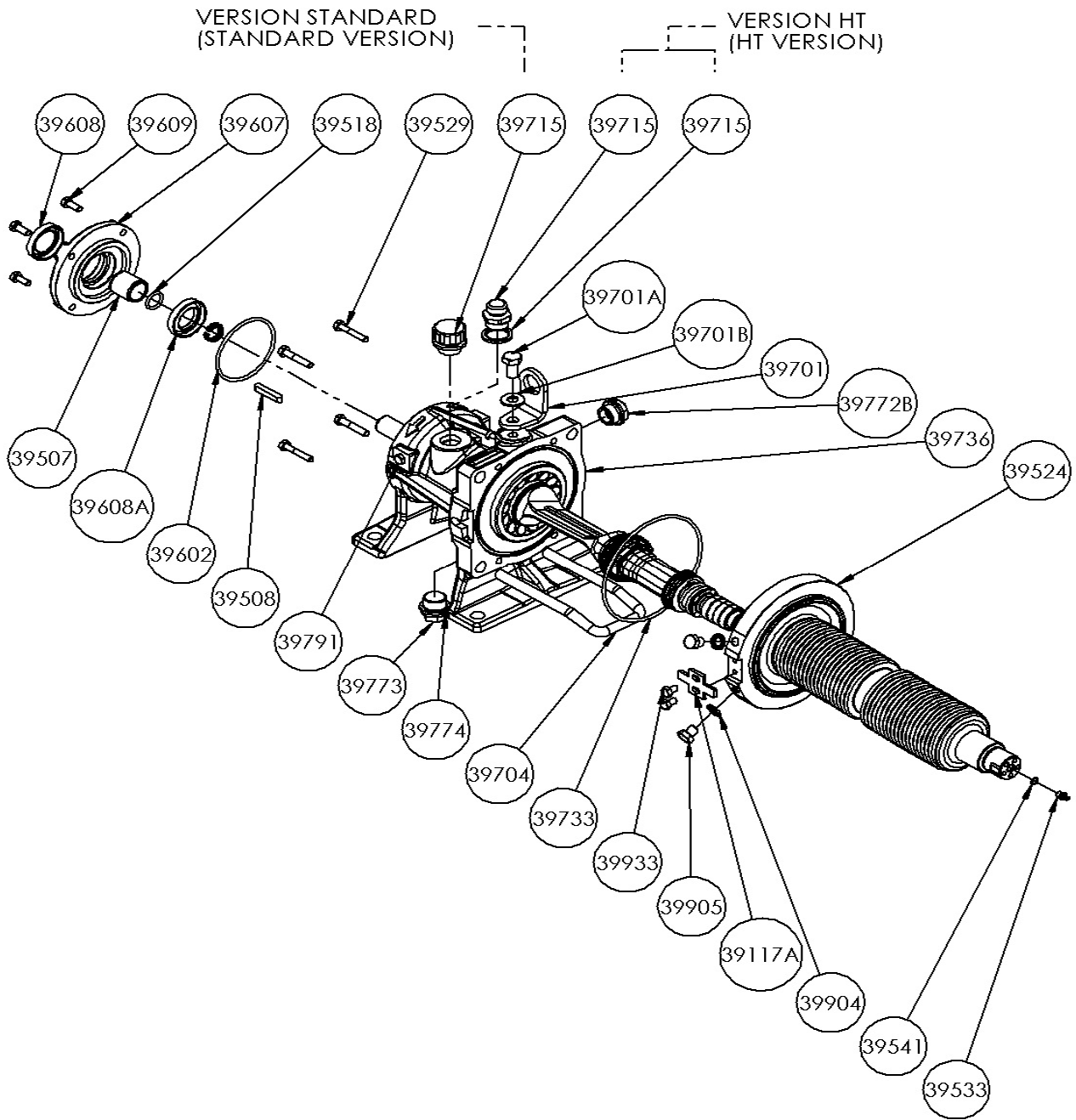
contact.mouvex@psgdover.com • www.mouvex.com

G-FLO 6 S_HT - G-FLO 8 S_HT Standard & Jacketed pump



G-FLO 6 S_HT - G-FLO 8 S_HT

Transmission



G-FLO 6 S_HT - G-FLO 8 S_HT

* 1, 2, 4... : Quantity in equipment - (1), (2), (4)... : Quantity in kit

Item	Available	Description	Qty*	Ref.	Maintenance kit	Wear part
39100	◆	MAIN BODY G-FLO 6_8 S_HT	1	AUX321665		
39100	◆	JACKETED MAIN BODY G-FLO 6_8 S_HT	1	AUX321677		
39101		MAIN BODY	(1)			
39108		FOOT	(1)			
39109		SCREW	(2)			
39124		PLUG (JACKETED PUMP)	(1)			
39110	◆	SCREWS SET FOR MAIN BODY_FRONT COVER G_H-FLO 6_8 S_HT	1	AUX321691		
39105		STUD	(2)			
39106		BLIND NUT	(4)			
39107		STUD	(2)			
39111		STUD	(4)			
39115		BLIND NUT	(4)			
39149		SCREW	(4)			
39410	◆	KIT FLANGES MAIN BODY_FRONT COVER PN16 DN50	1	AUX321692		
39410	◆	KIT FLANGES MAIN BODY_FRONT COVER PN20 DN50	1	AUX321693		
39136		SCREW	(6)			
39148		ROD	(2)			
39414		FLANGE	(2)			
39200	◆	SET CYLINDER_PISTON G_H-FLO 6 S_HT	1	AUX321641	■	
39200	◆	SET CYLINDER_PISTON G_H-FLO 8 S_HT	1	AUX321642	■	
39118		INDEXER	(1)			
39119		SCREW	(1)			
39201		CYLINDER	(1)			●
39301		PISTON	(1)			●
39304	◆	PISTON NUT	1	AUX244083		●
39304A		SCREW	(5)			
39304B		SCREW	(2)			
39206	◆	SET OF CVT CE1935/2004 'O' RING SEALS G_H-FLO 6_8 S_HT	1	AUX321689	■	
39206	◆	SET OF EPDM CE1935/2004 'O' RING SEALS G_H-FLO 6_8 S	1	AUX321690	■	
39206	◆	SET OF FKM CE1935/2004 'O' RING SEALS G_H-FLO 6_8 S_HT	1	AUX321688	■	
39113		SEAL	(1)			●
39113A		SEAL	(1)			●
39205		SEAL	(1)			●
39305		SEAL	(1)			●
39306		SEAL	(1)			●
39401	◆	FRONT COVER COMPLETE G-FLO 6_8 S_HT	1	AUX321648		
		G FLO 6_8 S_HT COMPLETE TRANSMISSION :				
		STANDARD				
39596	◆	STANDARD	1	AUX321717	■	●
39596*	◆	STANDARD_ECS	1	AUX321720	■	●
39596*	◆	STANDARD_ECS_OIL LEVEL SENSOR	1	AUX321721	■	●
39596*	◆	STANDARD_ATEX_ECS_OIL LEVEL SENSOR	1	AUX321722	■	●
		WITH BELLOWS MONITORING SYSTEM (BMS)				
39596*	◆	BMS	1	AUX321718	■	●
39596*	◆	BMS_ECS	1	AUX321723	■	●
39596*	◆	BMS_ECS_OIL LEVEL SENSOR	1	AUX321724	■	●
		WITH BELLOWS MONITORING SYSTEM (BMS) ATEX				
39596*	◆	BMS ATEX	1	AUX321719	■	●
39596*	◆	BMS ATEX_ECS	1	AUX321725	■	●
39596*	◆	BMS ATEX_ECS_OIL LEVEL SENSOR	1	AUX321726	■	●
		HT				
39596	◆	HT	1	AUX322474	■	●
39596*	◆	HT BMS	1	AUX322475	■	●
39596*	◆	BMS ATEX	1	AUX322550	■	●
39009A	◆	BEARING GASKETS_RINGS SET G_H-FLO 6_8 S_HT	1	AUX321715		
39498		BUSHING	(1)			
39507		SEAL RING	(1)			●
39518		SEAL	(1)			●
39602		SEAL	(1)			
39608		LIP SEAL	(1)			●
39608A		LIP SEAL	(1)			●

G-FLO 6 S_HT - G-FLO 8 S_HT

* 1, 2, 4... : Quantity in equipment - (1), (2), (4)... : Quantity in kit

Item	Available	Description	Qty*	Ref.	Maintenance kit	Wear part
39017A	◆	BELLOWS REPLACEMENT KIT G_H FLO 6_8 S_HT :				
		STANDARD	1	AUX321785	■	
39017A	◆	HT	1	AUX322529	■	
39017		SET BELLOWS	(1)			
39519		BUSHING (HT)	(1)			
39522		BUSHING (HT)	(1)			
39524		BELLOWS	(1)			
39533		PLUG	(1)			
39541		SEAL	(1)			
39023		SET PLUGS FOR BELLOWS	1			
39533A		SCREW	(1)			
39733		SEAL	(1)			
39602		O-RING	(1)			
39017A	◆	WITH BELLOWS MONITORING SYSTEM (BMS)	1	AUX321786	■	
39017A	◆	WITH BELLOWS MONITORING SYSTEM (BMS) ATEX	1	AUX321787	■	
39017A	◆	WITH BELLOWS MONITORING SYSTEM (BMS) - HT	1	AUX322530	■	
39017		SET BELLOWS WITH BMS	(1)			
39519		BUSHING	(1)			
39522		SEAL RING	(1)			
39524		BELLOWS	(1)			
39533		PLUG	(1)			
39541		SEAL	(1)			
39023		SET BELLOWS BMS	(1)			
39533A		SCREW	(1)			
39733		SEAL	(1)			
39602		O-RING	(1)			
39585	◆	BELLOW MOUNTING TOOLS G_H-FLO 6_8	1	AUX321784		
39749	◆	KIT EASY CLEAN SYSTEM (ECS) G_H-FLO 1_2_3_6_8	1	AUX321711		
39748	◆	SET SEAL FOR ECS G_H-FLO 1_2_3_6_8	1	AUX321709		

* ECS : EASY CLEAN SYSTEM - BMS : BELLOWS MONITORING SYSTEM