



P.L. : 1013-D02

Effective
Replaces

July 2024
June 2023

PARTS LIST
PUMPS
G-FLO 6 S - G-FLO 8 S

Keep this parts lists with Installation, Operation and Maintenance Instructions.

To order the required spare parts, indicate the desired Reference(s).

- ◆ Sets of parts or parts available to order.

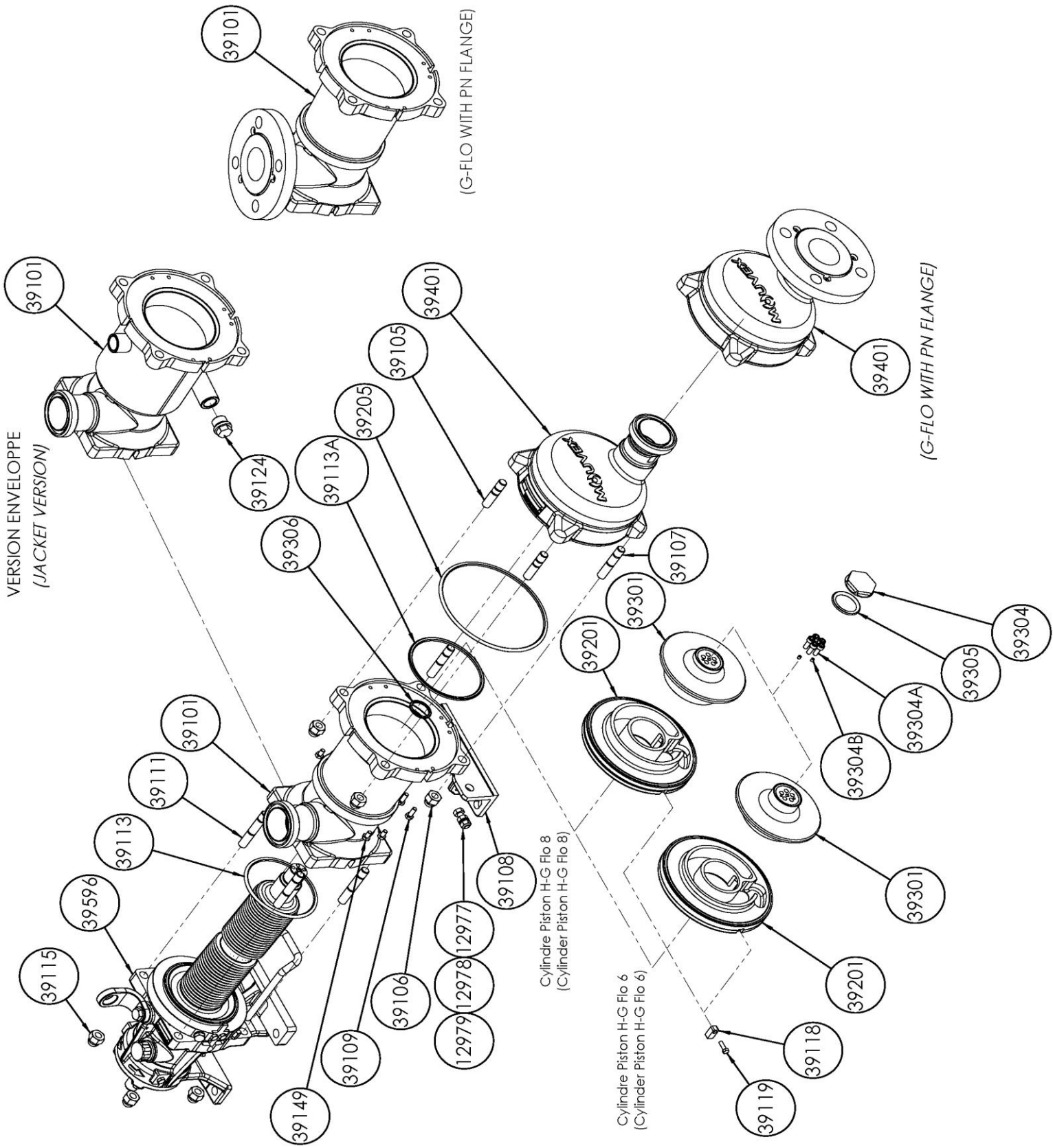
CVT : FEP encapsulated FKM

Z.I. la Plaine des Isles - 2 rue des Caillottes F-89000 AUXERRE - France

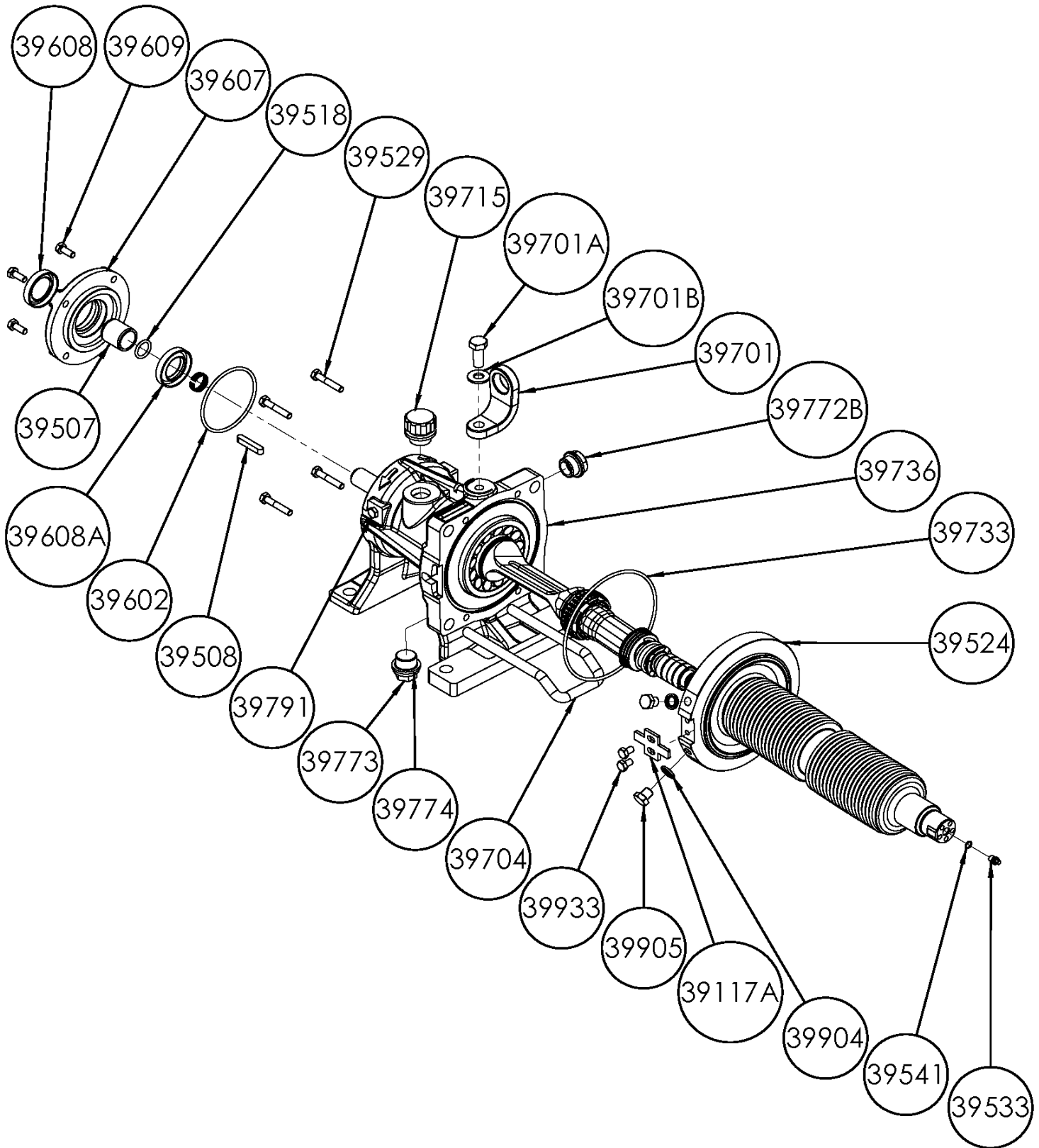
Tel : +33 (0)3 86 49 86 30 • Fax : +33 (0)3 86 49 87 17
contact.mouvex@psgdover.com • www.mouvex.com

G-FLO 6 S - G-FLO 8 S

Standard & Jacketed pump



G-FLO 6 S - G-FLO 8 S
Transmission



G-FLO 6 S - G-FLO 8 S

* 1, 2, 4... : Quantity in equipment - (1), (2), (4)... : Quantity in kit

| Item | Available | Description | Qty* | Ref. | Maintenance kit | Wear part |
|--------|-----------|--|------|-----------|-----------------|-----------|
| 39100 | ◆ | MAIN BODY G FLO 6_8 S | 1 | AUX321665 | | |
| 39100 | ◆ | JACKETED MAIN BODY G FLO 6_8 S | 1 | AUX321677 | | |
| 39101 | | MAIN BODY | (1) | | | |
| 39108 | | FOOT | (1) | | | |
| 39109 | | SCREW | (2) | | | |
| 39124 | | PLUG (JACKETED PUMP) | (1) | | | |
| 39110 | ◆ | SCREWS SET FOR MAIN BODY_FRONT COVER G_H FLO 6_8 S | 1 | AUX321691 | | |
| 39105 | | STUD | (2) | | | |
| 39106 | | BLIND NUT | (4) | | | |
| 39107 | | STUD | (2) | | | |
| 39111 | | STUD | (4) | | | |
| 39115 | | BLIND NUT | (4) | | | |
| 39149 | | SCREW | (4) | | | |
| 39410 | ◆ | KIT FLANGES MAIN BODY_FRONT COVER PN16 DN50 | 1 | AUX321692 | | |
| 39410 | ◆ | KIT FLANGES MAIN BODY_FRONT COVER PN20 DN50 | 1 | AUX321693 | | |
| 39136 | | SCREW | (6) | | | |
| 39148 | | ROD | (2) | | | |
| 39414 | | FLANGE | (2) | | | |
| 39200 | ◆ | SET CYLINDER_PISTON G_H FLO 6 S | 1 | AUX321641 | ■ | |
| 39200 | ◆ | SET CYLINDER_PISTON G_H FLO 8 S | 1 | AUX321642 | ■ | |
| 39118 | | INDEXER | (1) | | | |
| 39119 | | SCREW | (1) | | | |
| 39201 | | CYLINDER | (1) | | | ● |
| 39301 | | PISTON | (1) | | | ● |
| 39304 | ◆ | PISTON NUT G_H FLO 6_8 S | 1 | AUX244083 | | ● |
| 39304A | | SCREW | (5) | | | |
| 39304B | | SCREW | (2) | | | |
| 39206 | ◆ | SET OF CVT CE1935/2004 'O' RING SEALS G_H FLO 6_8 S | 1 | AUX321689 | ■ | |
| 39206 | ◆ | SET OF EPDM CE1935/2004 'O' RING SEALS G_H FLO 6_8 S | 1 | AUX321690 | ■ | |
| 39206 | ◆ | SET OF FKM CE1935/2004 'O' RING SEALS G_H FLO 6_8 S | 1 | AUX321688 | ■ | |
| 39113 | | SEAL | (1) | | | ● |
| 39113A | | SEAL | (1) | | | ● |
| 39205 | | SEAL | (1) | | | ● |
| 39305 | | SEAL | (1) | | | ● |
| 39306 | | SEAL | (1) | | | ● |
| 39401 | ◆ | FRONT COVER COMPLETE G FLO 6_8 S | 1 | AUX321648 | | |
| | | G FLO 6_8 S COMPLETE TRANSMISSION : | | | | |
| | | STANDARD | | | | |
| 39596 | ◆ | STANDARD | 1 | AUX321717 | ■ | ● |
| 39596* | ◆ | STANDARD_ECS | 1 | AUX321720 | ■ | ● |
| 39596* | ◆ | STANDARD_ECS_OIL LEVEL SENSOR | 1 | AUX321721 | ■ | ● |
| 39596* | ◆ | STANDARD_ATEX_ECS_OIL LEVEL SENSOR | 1 | AUX321722 | ■ | ● |
| | | WITH BELLOWS MONITORING SYSTEM (BMS) | | | | |
| 39596* | ◆ | BMS | 1 | AUX321718 | ■ | ● |
| 39596* | ◆ | BMS_ECS | 1 | AUX321723 | ■ | ● |
| 39596* | ◆ | BMS_ECS_OIL LEVEL SENSOR | 1 | AUX321724 | ■ | ● |
| | | WITH BELLOWS MONITORING SYSTEM (BMS) ATEX | | | | |
| 39596* | ◆ | BMS ATEX | 1 | AUX321719 | ■ | ● |
| 39596* | ◆ | BMS ATEX_ECS | 1 | AUX321725 | ■ | ● |
| 39596* | ◆ | BMS ATEX_ECS_OIL LEVEL SENSOR | 1 | AUX321726 | ■ | ● |
| 39009A | ◆ | BEARING GASKETS_RINGS SET G_H FLO 6_8 S | 1 | AUX321715 | | |
| 39498 | | BUSHING | (1) | | | |
| 39507 | | SEAL RING | (1) | | | ● |
| 39518 | | SEAL | (1) | | | ● |
| 39602 | | SEAL | (1) | | | |
| 39608 | | LIP SEAL | (1) | | | ● |
| 39608A | | LIP SEAL | (1) | | | ● |

G-FLO 6 S - G-FLO 8 S

* 1, 2, 4... : Quantity in equipment - (1), (2), (4)... : Quantity in kit

| Item | Available | Description | Qty* | Ref. | Maintenance kit | Wear part |
|---------------|-----------|--|----------|------------------|-----------------|-----------|
| 39017A | ◆ | BELLOWS REPLACEMENT KIT G_H FLO 6_8 S : | 1 | AUX321785 | ■ | |
| 39017 | | STANDARD SET BELLOWS | (1) | | | |
| 39524 | | BELLOWS | (1) | | | |
| 39533 | | PLUG | (1) | | | |
| 39541 | | SEAL | (1) | | | |
| 39023 | | SET PLUGS FOR BELLOWS | 1 | | | |
| 39533A | | SCREW | (1) | | | |
| 39733 | | SEAL | (1) | | | |
| 39602 | | O-RING | (1) | | | |
| 39017A | ◆ | WITH BELLOWS MONITORING SYSTEM (BMS) | 1 | AUX321786 | ■ | |
| 39017A | ◆ | WITH BELLOWS MONITORING SYSTEM (BMS) ATEX | 1 | AUX321787 | ■ | |
| 39017 | | SET BELLOWS WITH BMS | (1) | | | |
| 39519 | | BUSHING | (1) | | | |
| 39522 | | SEAL RING | (1) | | | |
| 39524 | | BELLOWS | (1) | | | |
| 39533 | | PLUG | (1) | | | |
| 39541 | | SEAL | (1) | | | |
| 39023 | | SET BELLOWS BMS | (1) | | | |
| 39533A | | SCREW | (1) | | | |
| 39733 | | SEAL | (1) | | | |
| 39602 | | O-RING | (1) | | | |
| 39585 | ◆ | BELLOW MOUNTING TOOLS G_H FLO 6_8 | 1 | AUX321784 | | |
| 39749 | ◆ | KIT EASY CLEAN SYSTEM (ECS) G_H FLO 6_8 | 1 | AUX321711 | | |
| 39748 | ◆ | SET SEAL FOR ECS G_H FLO 6_8 | 1 | AUX321709 | | |

* ECS : EASY CLEAN SYSTEM - BMS : BELLOWS MONITORING SYSTEM