



P.L. : 1004-D01

Effective
Replaces

May 2020
July 2018

PARTS LIST
PUMPS
SLC24 i - SLC36 i - SLC45 i

Keep this parts lists with Installation, Operation and Maintenance Instructions.

To order the required spare parts, indicate the desired Reference(s).

- ◆ Sets of parts or parts available to order.

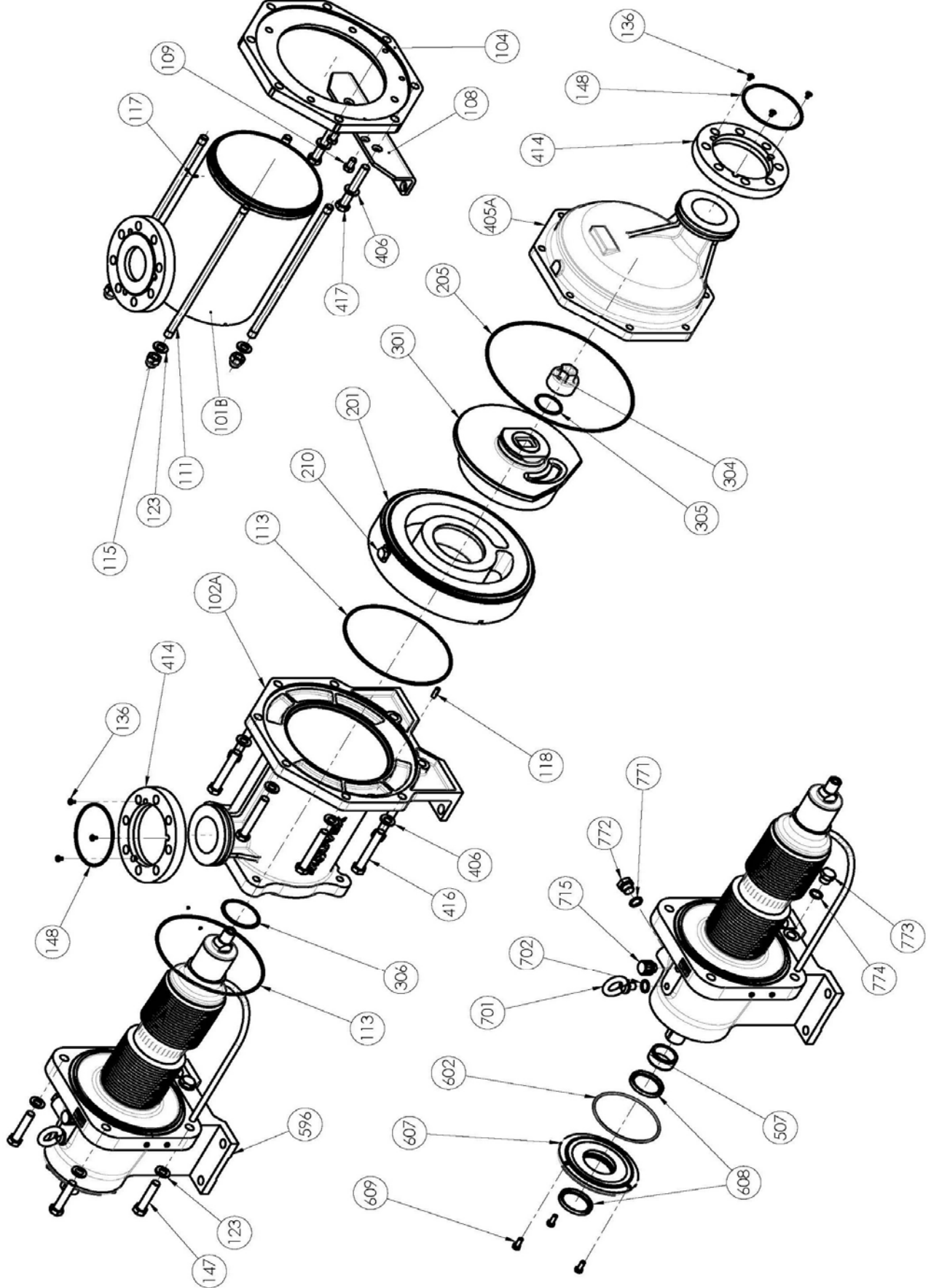
CVT : FEP encapsulated FKM

Z.I. la Plaine des Isles - 2 rue des Caillottes F-89000 AUXERRE - France

Tel : +33 (0)3 86 49 86 30 • Fax : +33 (0)3 86 49 87 17
contact.mouvex@psgdover.com • www.mouvex.com

SLC24 i - SLC36 i - SLC45 i

Standard pump & Turn able manifold



SLC24 i

* 1, 2, 4... : Quantity in equipment - (1), (2), (4)... : Quantity in kit

Item	Available	Description	Qty*	Ref.	Maintenance kit	Wear part
8	◆	PLUGS_BREATHER_LIFTING EYE BOLTS_SEALS	1	AUX312196		
701		LIFTING EYE BOLTS	(1)			
702		SEAL	(1)			●
715	◆	BREATHER	1	AUX219240		●
771		SEAL	(1)			●
772		PLUG	(1)			
773		PLUG	(1)			
774		SEAL	(1)			●
9	◆	BEARING COVER_GASKETS_SCREWS	1	AUX315283		
507		SEAL RING	(1)			●
602		SEAL	(1)			●
607		COVER	(1)			
608		LIP SEAL	(2)			●
609		SCREW	(3)			
100B	◆	STANDARD MAIN BODY WITHOUT FLANGE SLC 24 36 45	1	AUX316973		
102A		MAIN BODY	(1)			
118		PIN	(1)			
100	◆	JACKETED MAIN BODY WITHOUT FLANGE SLC 24 36 45	1	AUX317689		
101B		MAIN BODY	(1)			
104		MAIN BODY FLANGE	(1)			
108		SUPPORT FOOT	(1)			
109		SCREW	(2)			
117		PIN	(1)			
118		PIN	(1)			
124		PLUG	(2)			
100B	◆	TURN ABLE MANIFOLD MAIN BODY WITHOUT FLANGE SLC 24 36 45	1	AUX317676		
101B		MAIN BODY	(1)			
104		MAIN BODY FLANGE	(1)			
108		SUPPORT FOOT	(1)			
109		SCREW	(2)			
117		PIN	(1)			
118		PIN	(1)			
410	◆	KIT FLANGES MAIN BODY_FRONT COVER PN16 SLC 24_36_45	1	AUX316971		
410	◆	KIT FLANGES MAIN BODY_FRONT COVER PN20 SLC 24_36_45	1	AUX316972		
136		SCREW	(6)			
148		ROD	(2)			
414		FLANGE	(2)			
119	◆	SCREWS SET SLC 24_45 - STANDARD PUMP	1	AUX316969		
123		WASHER	(4)			
147		SCREW	(4)			
406		WASHER	(8)			
416		SCREW	(8)			
119	◆	SCREWS SET SLS 24 SLC 24_45 - JACKETED PUMP	1	AUX312184		
105		STUD	(6)			
106		BLIND NUT	(16)			
107		STUD	(2)			
111		STUD	(4)			
115		BLIND NUT	(4)			
123		WASHER	(4)			
119	◆	SCREWS SET SLC 24_45 - TURN ABLE MANIFOLD	1	AUX317679		
111		STUD	(4)			
115		BLIND NUT	(4)			
123		WASHER	(4)			
406		WASHER	(8)			
416		SCREW	(6)			
417		SCREW	(2)			

SLC24 i

* 1, 2, 4... : Quantity in equipment - (1), (2), (4)... : Quantity in kit

Item	Available	Description	Qty*	Ref.	Maintenance kit	Wear part
200	◆	SET CYLINDER_PISTON	1	AUX313401	■	
201		CYLINDER	(1)			●
210		SCREW	(1)			
301		PISTON	(1)			●
304	◆	PISTON NUT	1	AUX219426		●
206	◆	SET OF CVT 'O' RING SEALS	1	AUX317023	■	
206	◆	SET OF FKM 'O' RING SEALS	1	AUX317022	■	
113		O-RING	(2)			●
205*		O-RING - CVT	1	AUX219401		●
205*		O-RING - FKM	1	AUX200884		●
305		O-RING	(1)			●
306		O-RING	(1)			●
400	◆	COMPLETE FRONT COVER SLC 24 36 45 - JACKETED PUMP	1	AUX317690		
401		FRONT COVER	(1)			
402		OUTLET TUBE	(1)			
407		PLUG	(1)			
405A	◆	FRONT COVER SLC 24 36 45 - STANDARD_TURN ABLE MANIFOLD	1	AUX230108		
596	◆	COMPLETE TRANSMISSION : WITHOUT BELLOWS MONITORING SYSTEM	1	AUX314202	■	●
596	◆	WITH PRESSURE SWITCH BELLOWS MONITORING SYSTEM	1	AUX313466	■	●
596	◆	WITH ATEX PRESSURE SWITCH BELLOWS MONITORING SYSTEM	1	AUX313827	■	●

* Standard pump : Qty 1 - Jacketed pump : Qty 2 (order 1 Set of seals 206 + 1 Seal 205)

SLC36 i

* 1, 2, 4... : Quantity in equipment - (1), (2), (4)... : Quantity in kit

Item	Available	Description	Qty*	Ref.	Maintenance kit	Wear part
8	◆	PLUGS_BREATHER_LIFTING EYE BOLTS_SEALS	1	AUX312196		
701		LIFTING EYE BOLTS	(1)			
702		SEAL	(1)			●
715	◆	BREATHER	1	AUX219240		●
771		SEAL	(1)			●
772		PLUG	(1)			
773		PLUG	(1)			
774		SEAL	(1)			●
9	◆	BEARING COVER_GASKETS_SCREWS	1	AUX315283		
507		SEAL RING	(1)			●
602		SEAL	(1)			●
607		COVER	(1)			
608		LIP SEAL	(2)			●
609		SCREW	(3)			
100B	◆	STANDARD MAIN BODY WITHOUT FLANGE SLC 24 36 45	1	AUX316973		
102A		MAIN BODY	(1)			
118		PIN	(1)			
100	◆	JACKETED MAIN BODY WITHOUT FLANGE SLC 24 36 45	1	AUX317689		
101B		MAIN BODY	(1)			
104		MAIN BODY FLANGE	(1)			
108		SUPPORT FOOT	(1)			
109		SCREW	(2)			
117		PIN	(1)			
118		PIN	(1)			
124		PLUG	(2)			
100B	◆	TURN ABLE MANIFOLD MAIN BODY WITHOUT FLANGE SLC 24 36 45	1	AUX317676		
101B		MAIN BODY	(1)			
104		MAIN BODY FLANGE	(1)			
108		SUPPORT FOOT	(1)			
109		SCREW	(2)			
117		PIN	(1)			
118		PIN	(1)			
410	◆	KIT FLANGES MAIN BODY_FRONT COVER PN16 SLC 24_36_45	1	AUX316971		
410	◆	KIT FLANGES MAIN BODY_FRONT COVER PN20 SLC 24_36_45	1	AUX316972		
136		SCREW	(6)			
148		ROD	(2)			
414		FLANGE	(2)			
119	◆	SCREWS SET SLC 36 - STANDARD PUMP	1	AUX316970		
123		WASHER	(4)			
147		SCREW	(4)			
406		WASHER	(8)			
416		SCREW	(8)			
119	◆	SCREWS SET SLS 36 SLC 36 - JACKETED PUMP	1	AUX312260		
105		STUD	(6)			
106		BLIND NUT	(16)			
107		STUD	(2)			
111		STUD	(4)			
115		BLIND NUT	(4)			
123		WASHER	(4)			
119	◆	SCREWS SET SLC 36 - TURN ABLE MANIFOLD	1	AUX317682		
111		STUD	(4)			
115		BLIND NUT	(4)			
123		WASHER	(4)			
406		WASHER	(8)			
416		SCREW	(6)			
417		SCREW	(2)			

SLC36 i

* 1, 2, 4... : Quantity in equipment - (1), (2), (4)... : Quantity in kit

Item	Available	Description	Qty*	Ref.	Maintenance kit	Wear part
200	◆	SET CYLINDER_PISTON	1	AUX313403	■	
201		CYLINDER	(1)			●
210		SCREW	(1)			
301		PISTON	(1)			●
304	◆	PISTON NUT	1	AUX219455		●
206	◆	SET OF CVT 'O' RING SEALS	1	AUX317023	■	
206	◆	SET OF FKM 'O' RING SEALS	1	AUX317022	■	
113		O-RING	(2)			●
205*		O-RING - CVT	1	AUX219401		●
205*		O-RING - FKM	1	AUX200884		●
305		O-RING	(1)			●
306		O-RING	(1)			●
400	◆	COMPLETE FRONT COVER SLC 24 36 - JACKETED PUMP	1	AUX317690		
401		FRONT COVER	(1)			
402		OUTLET TUBE	(1)			
407		PLUG	(1)			
405A	◆	FRONT COVER SLC 24 36 45 - STANDARD_TURN ABLE MANIFOLD	1	AUX230108		
596	◆	COMPLETE TRANSMISSION : WITHOUT BELLOWS MONITORING SYSTEM	1	AUX314202	■	●
596	◆	WITH PRESSURE SWITCH BELLOWS MONITORING SYSTEM	1	AUX313466	■	●
596	◆	WITH ATEX PRESSURE SWITCH BELLOWS MONITORING SYSTEM	1	AUX313827	■	●

* Standard pump : Qty 1 - Jacketed pump : Qty 2 (order 1 Set of seals 206 + 1 Seal 205)

SLC45 i

* 1, 2, 4... : Quantity in equipment - (1), (2), (4)... : Quantity in kit

Item	Available	Description	Qty*	Ref.	Maintenance kit	Wear part
8	◆	PLUGS_BREATHER_LIFTING EYE BOLTS_SEALS	1	AUX312196		
701		LIFTING EYE BOLTS	(1)			
702		SEAL	(1)			●
715	◆	BREATHER	1	AUX219240		●
771		SEAL	(1)			●
772		PLUG	(1)			
773		PLUG	(1)			
774		SEAL	(1)			●
9	◆	BEARING COVER_GASKETS_SCREWS	1	AUX315283		
507		SEAL RING	(1)			●
602		SEAL	(1)			●
607		COVER	(1)			
608		LIP SEAL	(2)			●
609		SCREW	(3)			
100B	◆	STANDARD MAIN BODY WITHOUT FLANGE SLC 24 36 45	1	AUX316973		
102A		MAIN BODY	(1)			
118		PIN	(1)			
100	◆	JACKETED MAIN BODY WITHOUT FLANGE SLC 24 36 45	1	AUX317689		
101B		MAIN BODY	(1)			
104		MAIN BODY FLANGE	(1)			
108		SUPPORT FOOT	(1)			
109		SCREW	(2)			
117		PIN	(1)			
118		PIN	(1)			
124		PLUG	(2)			
100B	◆	TURN ABLE MANIFOLD MAIN BODY WITHOUT FLANGE SLC 24 36 45	1	AUX317676		
101B		MAIN BODY	(1)			
104		MAIN BODY FLANGE	(1)			
108		SUPPORT FOOT	(1)			
109		SCREW	(2)			
117		PIN	(1)			
118		PIN	(1)			
410	◆	KIT FLANGES MAIN BODY_FRONT COVER PN16 SLC 24_36	1	AUX316971		
410	◆	KIT FLANGES MAIN BODY_FRONT COVER PN20 SLC 24_36	1	AUX316972		
136		SCREW	(6)			
148		ROD	(2)			
414		FLANGE	(2)			
119	◆	SCREWS SET SLC 24_45 - STANDARD PUMP	1	AUX316969		
123		WASHER	(4)			
147		SCREW	(4)			
406		WASHER	(8)			
416		SCREW	(8)			
119	◆	SCREWS SET SLS 24 SLC 24_45 - JACKETED PUMP	1	AUX312184		
105		STUD	(6)			
106		BLIND NUT	(16)			
107		STUD	(2)			
111		STUD	(4)			
115		BLIND NUT	(4)			
123		WASHER	(4)			
119	◆	SCREWS SET SLC 24_45 - TURN ABLE MANIFOLD	1	AUX317679		
111		STUD	(4)			
115		BLIND NUT	(4)			
123		WASHER	(4)			
406		WASHER	(8)			
416		SCREW	(6)			
417		SCREW	(2)			

SLC45 i

* 1, 2, 4... : Quantity in equipment - (1), (2), (4)... : Quantity in kit

Item	Available	Description	Qty*	Ref.	Maintenance kit	Wear part
200	◆	SET CYLINDER_PISTON	1	AUX319054	■	
201		CYLINDER	(1)			●
210		SCREW	(1)			
301		PISTON	(1)			●
304	◆	PISTON NUT	1	AUX219455		●
206	◆	SET OF CVT 'O' RING SEALS	1	AUX317023	■	
206	◆	SET OF FKM 'O' RING SEALS	1	AUX317022	■	
113		O-RING	(2)			●
205*		O-RING - CVT	1	AUX219401		●
205*		O-RING - FKM	1	AUX200884		●
305		O-RING	(1)			●
306		O-RING	(1)			●
400	◆	COMPLETE FRONT COVER SLC 24 36 45 - JACKETED PUMP	1	AUX317690		
401		FRONT COVER	(1)			
402		OUTLET TUBE	(1)			
407		PLUG	(1)			
405A	◆	FRONT COVER SLC 24 36 45 - STANDARD_TURN ABLE MANIFOLD	1	AUX230108		
596	◆	COMPLETE TRANSMISSION : WITHOUT BELLOWS MONITORING SYSTEM	1	AUX319427	■	●
596	◆	WITH PRESSURE SWITCH BELLOWS MONITORING SYSTEM	1	AUX319055	■	●
596	◆	WITH ATEX PRESSURE SWITCH BELLOWS MONITORING SYSTEM	1	AUX319056	■	●

* Standard pump : Qty 1 - Jacketed pump : Qty 2 (order 1 Set of seals 206 + 1 Seal 205)