



**Instructions 1401-B00 (En)**

Section	1401
Effective	August 2024
Replaces	January 2021

Original instructions

***Torque limiter  
screw compressors  
B200 PS - B600 - MISTRAL  
TYPHON II - MX12***

**INSTALLATION**

**OPERATION**

**WARRANTY :**

Torque limiters for B200 PS - B600 - MISTRAL - TYPHON II - MX12 are covered 24 months by warranty within the limits mentioned in our General Sales Conditions. In case of a use other than that mentioned in the Instructions manual, and without preliminary agreement of MOUVEX, warranty will be canceled.



Z.I. La Plaine des Isles - F 89000 AUXERRE - FRANCE  
Tel. : +33 (0)3.86.49.86.30 - Fax : +33 (0)3.86.49.87.17  
contact.mouvex@psgdover.com - www.mouvex.com

Your distributor :

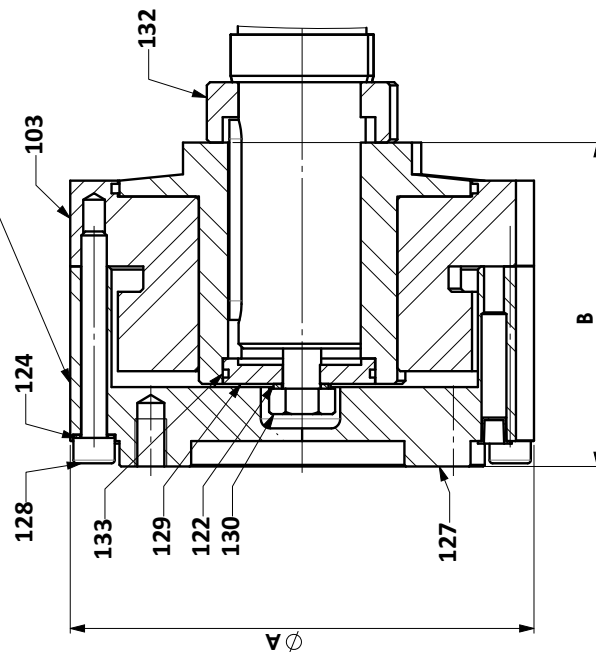
# LIMITEUR DE COUPLE TORQUE LIMITER

Limiteur de couple / Torque limiter Nm ± 20%	Repère / Bubble	Vis-Couple / Screw-Torque Nm ± 20%	A max mm	B max mm	Masse / Mass max Kg	C Taraudage / Thread	SAE Type	Nombre de trous / Number of holes	Filetage / Thread	Profondeur / Depth mini mm	Diamètre / Diameter mm
950	128	M8 / 24	180	104	16	M10	1410	4	M12	16	95.26
	130	M12 / 70					1350	4	M10	16	95.26
800	128	M8 / 24	146	102	9	M8	1410	4	M12	16	95.26
	130	M12 / 70					1350	4	M10	15	95.26
400	128	M6 / 7.5	115	79	4	M6	1120	4	M8	12	69.8
	130	M12 / 70									

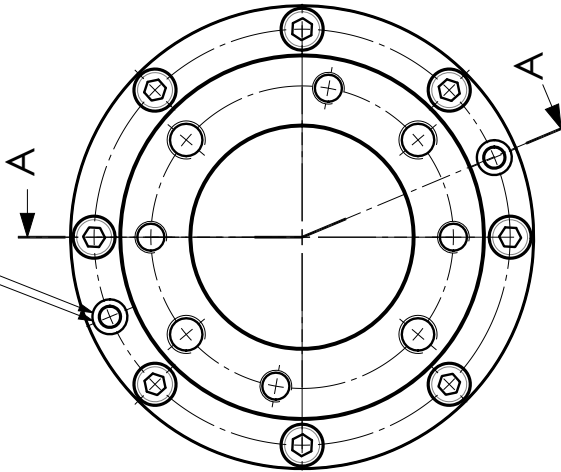
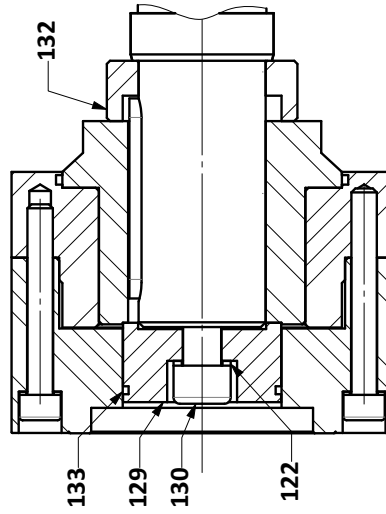
2 x C pour extraction de la cloche  
Non disponible sur la version B  
(2 x C for the extraction of the clutch  
Not available on version B)

## Version A

Référence MOUVEX et valeur du réglage.  
(MOUVEX reference and value of setting)



## Version B



COUPE A-A

DATE: 2024-06-21	ECHELLE: SCALE:	MASSÉ: Voir tableau
DATE:	SCALE:	MASSÉ: (See table)
DESINÉ PAR: VZ	VERIFIÉ PAR: FA	CHECKED BY:
DRAWN BY:	CHECKED BY:	

**MOUVEX**  
 Z.I. Plaine des Isles - Rue des Caillottes - 80000 LUXERRE - FRANCE  
 Téléphone: (33) 3 86 49 86 30 - Fax/Fax: (33) 3 86 46 42 10  
 Les données entre parenthèses sont à titre indicatif.  
 SERVICE: Les données entre parenthèses sont à titre indicatif.  
 DEPARTMENT: Les données entre parenthèses sont à titre indicatif.  
 FORMAT: NUMERO DE PLAN  
 REV: DRAWING NUMBER  
**A3** 56895 **B**

# 1. TORQUE LIMITER - VERSION A

## 1.1 Assembly

The torque limiter is preset at the factory at 400 N.m, 800 N.m ou 950 N.m

**In no case should this setting be changed.**

The table below gives, depending on the compressor and the type of drive, the setting for the suitable MOUVEX torque limiter.

	12R
B200 PS	400 N.m

	30R	20R	19R/22L	13R/15L
B600	800 N.m			
MISTRAL	800 N.m			
TYPHON II	800 N.m			950 N.m

	15R - 15L	18R - 18L	20R - 20L	24R - 24L
MX12 S & N	800 N.m			

## 1.2 Opening the limiter

- Unscrew the screws **128**.
- Remove the plastic plugs **121** and screw 2 of the screws **128** into the tapped holes of the clutch **127** until its extraction.

## 1.3 Fixing the limiter to the shaft

### 1.3.1 COMPRESSEURS B200 PS

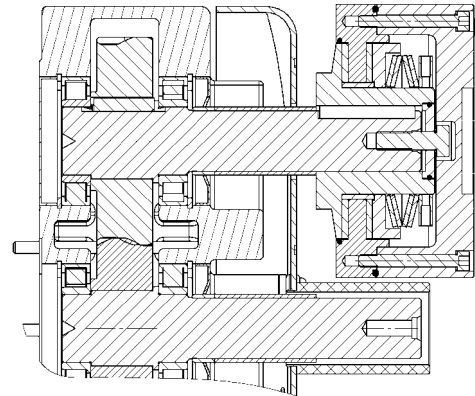
- Lubricate the shaft with graphite grease.
- Position the key.
- Press-fit the limiter onto the shaft so that it abuts with the sleeve.
- Grease the O-ring **133** and mount it on the washer **129**.
- Grease the housing of the washer **129** and position it on the torque limiter.
- Screw the screw **130** fitted with the seal **122** on to the shaft.

### 1.3.2 B600 - MISTRAL - TYPHON II COMPRESSORS

- Lubricate the shaft with graphite grease.
- **20R & 30R :**  
Slip the spacer **132** on the shaft by orienting the internal recess towards the shaft end.

#### 13R/15L & 19R/22L :

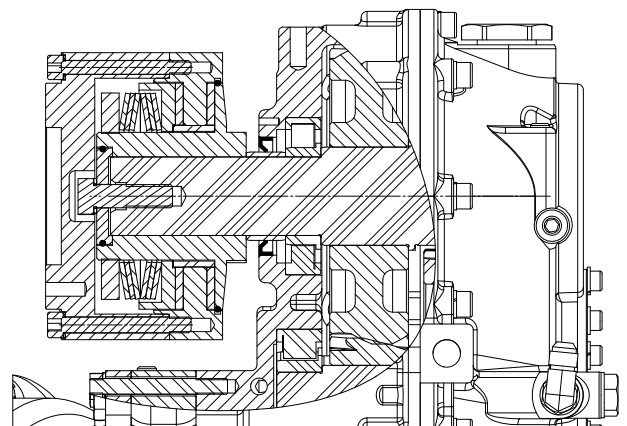
The spacer **132** is already mounted on one shaft. Check it is mounted on the proper shaft. If not, switch position for the shaft protection and the spacer before mounting the torque limiter.



- Position the key.
- Press-fit the limiter onto the shaft so that it abuts with the spacer.
- Grease the O-ring **133** and mount it on the washer **129**.
- Grease the housing of the washer **129** and position it on the torque limiter.
- Screw the screw **130** fitted with the seal **122** on to the shaft.

### 1.3.3 MX12 COMPRESSORS

- The spacer **132** is already mounted on the shaft.



- Position the key.
- Press-fit the limiter onto the shaft so that it abuts with the spacer.
- Grease the O-ring **133** and mount it on the washer **129**.
- Grease the housing of the washer **129** and position it on the torque limiter.
- Screw the screw **130** fitted with the seal **122** on to the shaft.

# 1. TORQUE LIMITER - VERSION A (continuous)

## 1.4 Closing the limiter

- **Models 400 N.m - 800 N.m** : Apply a sealing waterproof paste Loctite® 5972 or 510\* on the disk **103**, in the area guiding part **127**.
- **Model 950 N.m** : Put the O-Ring **123** into the groove of the disk **103**.
- Engage the clutch **127** on to the disk.
- Place the screws **128** and tight them at :
  - Model 400 N.m . . . . . 7,5 N.m.
  - Models 800 N.m - 950 N.m . . . . . 24 N.m.
- Fit the plastic plugs **121**.



THE PACKING HOUSING IS PROTECTED FROM CORROSION BY THE WATERPROOF PASTE AND THE SEAL. NON-COMPLIANCE WITH THEIR DISMANTLING INSTRUCTIONS CAN LEAD TO DETE-RIORATION OF THE PROTECTION PROVIDED BY THE PRESSURE RELIEF VALVE

## 1.5 Operating

The torque limiter is a fuse in the transmission line. The aim of the torque limiter is to protect the transmission, specially the PTO (Power Take Off).

The torque is pre-set in factory to avoid any skating in normal use and smooth starting. Hard starting can generate skating.

## 1.6 Warranty limits

The damages due to the torque limiter skating are not included in the warranty.

**Models 400 N.m - 800 N.m** : Not use the sealing waterproof paste, plugs **121**, seals **124** and others O-rings will void our warranty.

**Model 950 N.m** : Not use seal **123** and others O-rings, seals **124** and plugs **121** will void our warranty.

## 2. TORQUE LIMITER - VERSION B

### 2.1 Assembly

The torque limiter is preset at the factory at 400 N.m, 800 N.m ou 950 N.m

**In no case should this setting be changed.**

The table below gives, depending on the compressor and the type of drive, the setting for the suitable MOUVEX torque limiter.

	12R
B200 PS	400 N.m

	30R	20R	19R/22L	13R/15L
B600	800 N.m			
MISTRAL	800 N.m			
TYPHON II	800 N.m			950 N.m

	15R - 15L	18R - 18L	20R - 20L	24R - 24L
MX12 S & N	800 N.m			

### 2.2 Opening the limiter

- Remove screw **130** fitted with seal **122** and washer **129** fitted with seal **133**.

### 2.3 Fixing the limiter to the shaft

#### 2.3.1 B200 PS COMPRESSORS

- Lubricate the shaft with graphite grease.
- Position the key.
- Press-fit the limiter onto the shaft.
- Grease the O-ring **133**.
- Grease the housing of the washer **129** and position it on the torque limiter.
- Screw the screw **130** fitted with the seal **122** on to the shaft.

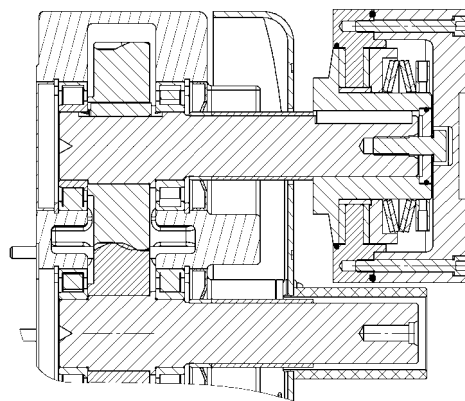
#### 2.3.2 B600 - MISTRAL - TYPHON II COMPRESSORS

- Lubricate the shaft with graphite grease.
- **20R & 30R :**  
Slip the spacer **132** on the shaft by orienting the internal recess towards the shaft end.

#### **13R/15L & 19R/22L :**

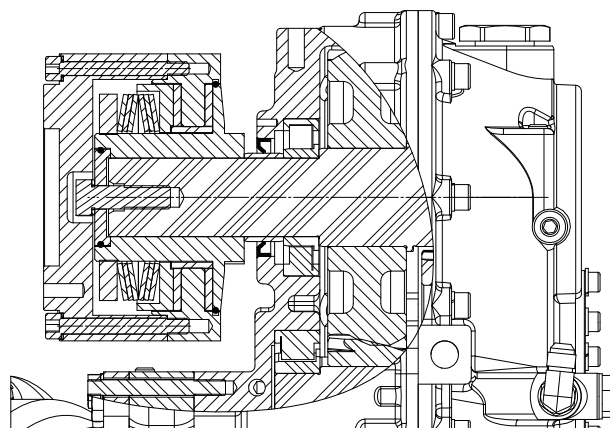
The spacer **132** is already mounted on one shaft. Check it is mounted on the proper shaft. If not, switch position for the shaft protection and the spacer before mounting the torque limiter.

- Position the key.
- Press-fit the limiter onto the shaft so that it abuts with the spacer.
- Grease the O-ring **133**.
- Grease the housing of the washer **129** and position it on the torque limiter.
- Screw the screw **130** fitted with the seal **122** on to the shaft.



#### 2.3.3 MX12 COMPRESSORS

- The spacer **132** is already mounted on the shaft.



- Position the key.
- Press-fit the limiter onto the shaft so that it abuts with the spacer.
- Grease the O-ring **133**.
- Grease the housing of the washer **129** and position it on the torque limiter.
- Screw the screw **130** fitted with the seal **122** on to the shaft.

### 2.4 Operating

The torque limiter is a fuse in the transmission line. The aim of the torque limiter is to protect the transmission, specially the PTO (Power Take Off).

The torque is pre-set in factory to avoid any skating in normal use and smooth starting. Hard starting can generate skating.

### 2.5 Warranty limits

The damages due to the torque limiter skating are not included in the warranty.