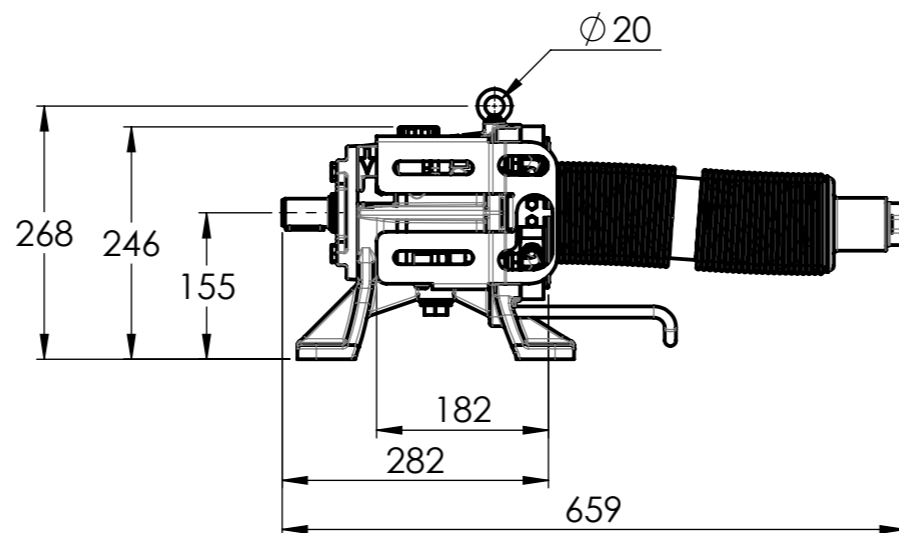
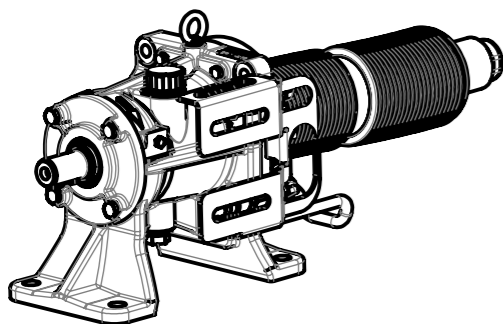
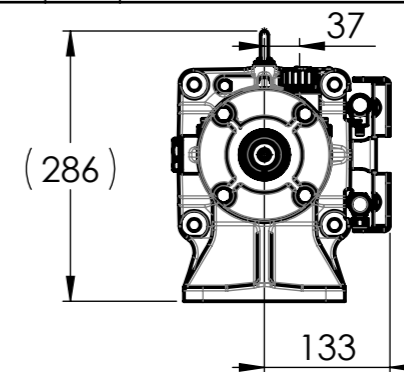


7 6 5 4 3 2 1

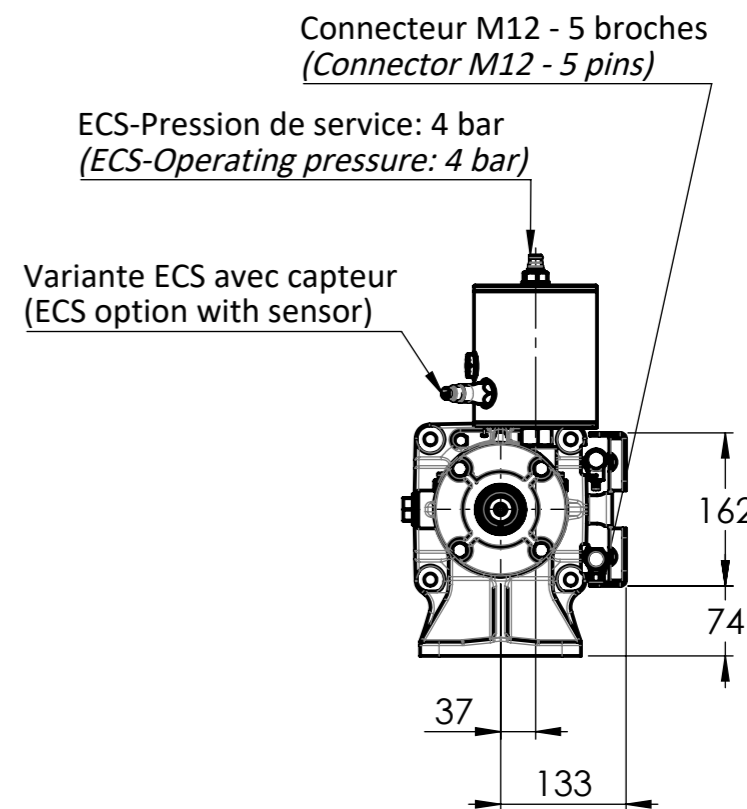
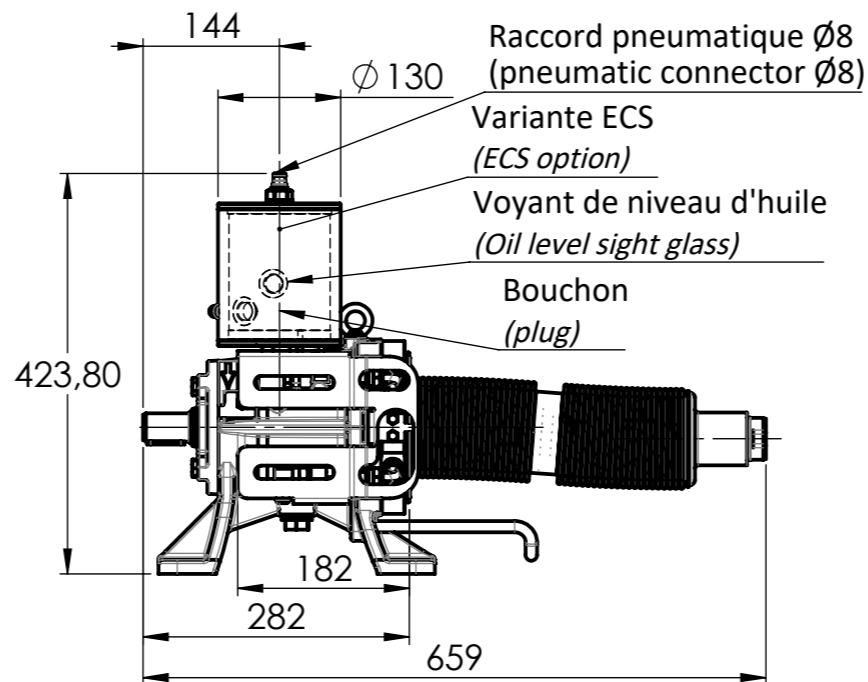
**TRANSMISSION AVEC BMS**  
(TRANSMISSION BLOCK WITH BMS)  
**H FLO & G FLO 15**



REVISIONS		
ECN	REV.	DESCRIPTION
M3670	C	Mise à jour Pot ECS

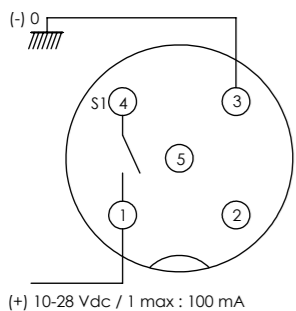


**TRANSMISSION AVEC BMS et ECS**  
(TRANSMISSION BLOCK WITH BMS & ECS)  
**H FLO & G FLO 15**

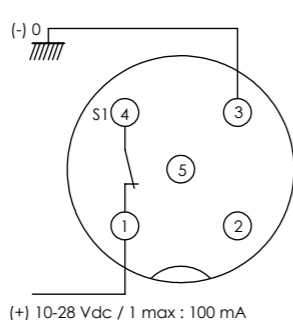


**Pressostat Standard**  
(Standard Pressure Switch)

**Déclenchement**  
(Détection)



**Fonctionnement normal**  
(Normal operation)



S1 : Sortie PNP max 70mA sous 28 VDC  
(Switch out PNP max 70mA under 28 VDC)

**NOTA :**  
Pour les autres cotes, se reporter au plan d'encombrement de la pompe.  
Le réglage des seuils de détection se fait en usine et ne doit pas être modifié.

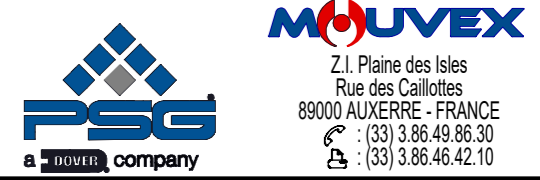
**NOTE:**  
For other dimensions, refer to pump dimensional drawing.  
Setting of detection levels is done in factory and do not have to be modified.

**ATTENTION !**  
Consulter la notice d'instruction.  
Un mauvais branchement peut générer  
- des risques d'inflammation ;  
- rendre inefficace la surveillance ;  
- voire endommager le capteur.

**CAUTION!**  
Consult instruction handbook.  
A wrong connection could:  
- create inflammation risk;  
- make ineffective the monitoring;  
- damage the sensor.

BMS = Systeme de surveillance du soufflet  
ECS = Systeme de nettoyage amélioré  
(BMS = Bellows monitoring system  
ECS = Easy clean system)

COMMENTS OR DIMENSIONS IN BRACKETS ARE INDICATIVE			UNLESS OTHERWISE SPECIFIED, ALL DIMENSIONS ARE IN MM	
DRAWN	NAME	DATE	PROJECTION	FIRST ANGLE
APPV'D	AW	2022-09-02	WEIGHT: 41.15 Kg	
SCALE: 1:8			DO NOT SCALE DRAWING	
DRAWING N°			M001966A1	
REV :			C	
SIZE : A3			SHEET 1 OF 1	



7 6 5 4 3 2 1