



Screw Compressor Package – DDK Individual Direct-Drive Kit System

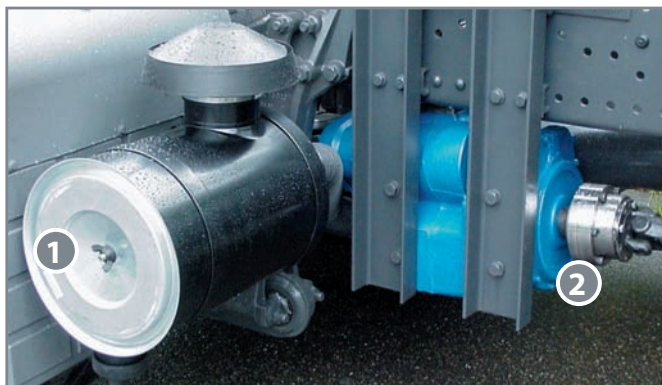
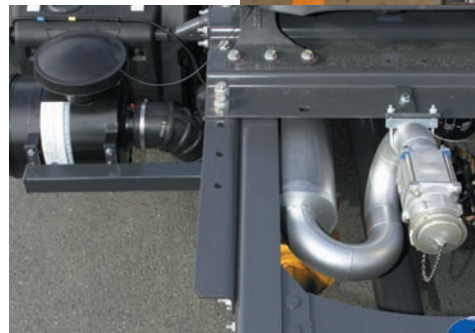
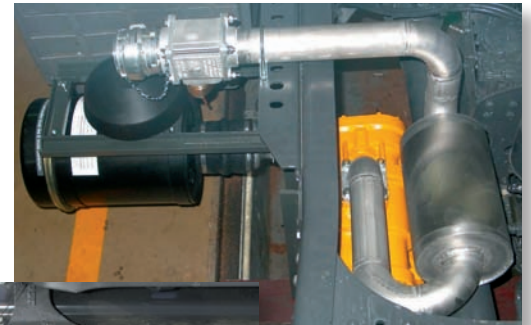
Mouvex® has developed easy-to-install direct-drive kit systems, cooled and non-cooled, fitted with common accessories for PTO systems.

Kit Components Sized For:

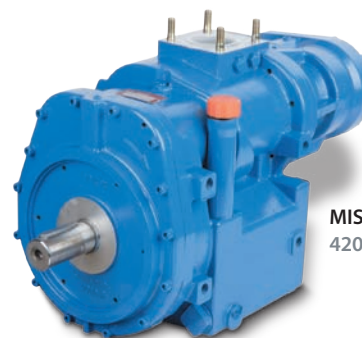
- B600
- MISTRAL
- TYPHON II

Kits Include:

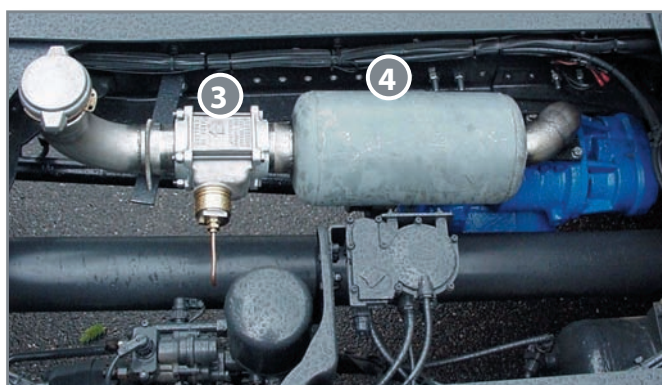
- 1 Suction Filter
- 2 Torque Limiter
- 3 Check and Relief Valve
- 4 Silencer



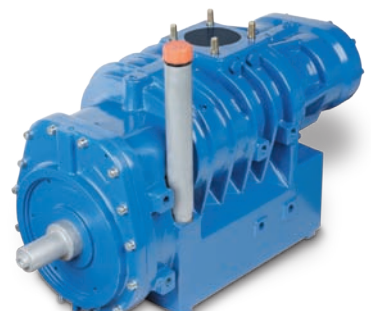
B600
325 - 600 m³/h



MISTRAL
420 - 750 m³/h

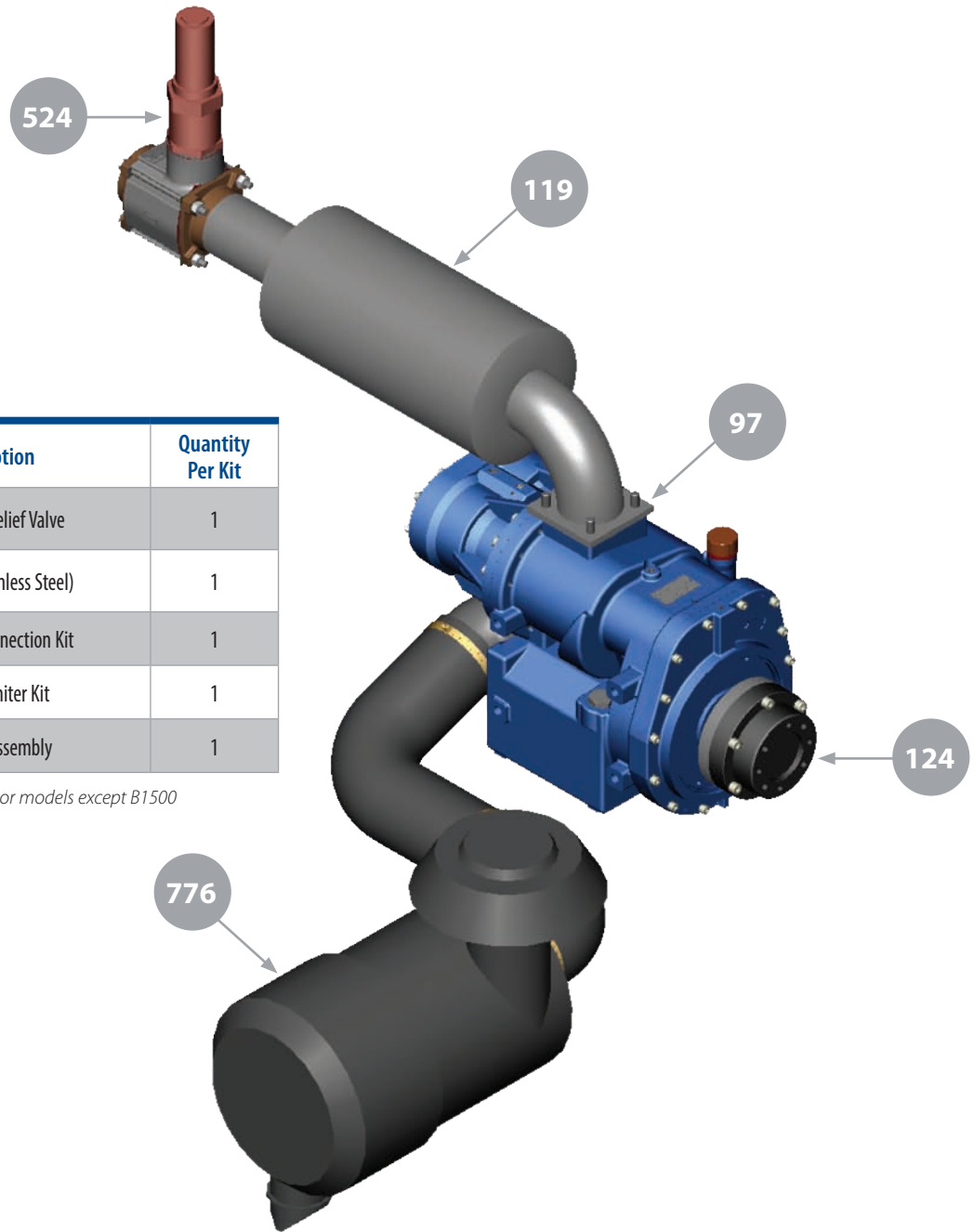


TYPHON II
600 - 1130 m³/h





Screw Compressor Package – DDK Individual Direct-Drive Kit System



Reference Number	Description	Quantity Per Kit
524	Check and Relief Valve	1
119	Silencer (Stainless Steel)	1
97	Discharge Connection Kit	1
124	Torque Limiter Kit	1
776	Filter Kit Assembly	1

Available for all Mouvex screw compressor models except B1500



ZI la Plaine des Isles • 2 rue des Caillottes
F-89000 AUXERRE - FRANCE
Tel: + 33.3.86.49.86.30 • Fax: + 33.3.86.46.42.10
contact@mouvex.com
mouvex.com

Authorized PSG® Partner: