



MISTRAL Screw Compressor

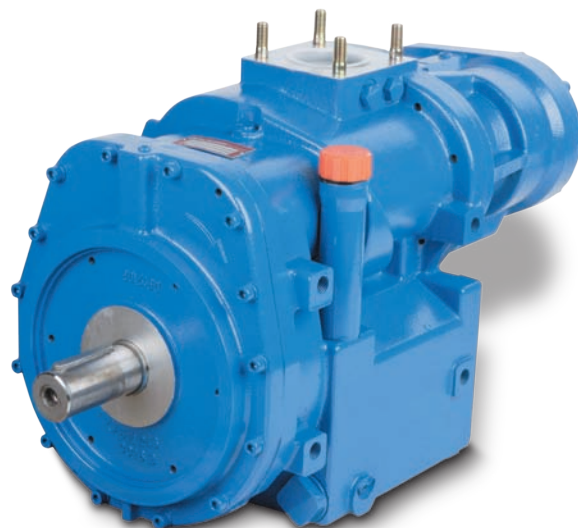




The Multipurpose Solution for Mounting Inside Truck Frame

MISTRAL-20R:1200 – 2000 rpm CW **MISTRAL-30R:**1800 – 3000 rpm CW **Dimensions:**

L 587 x H 355 x W 280 mm

Weight:

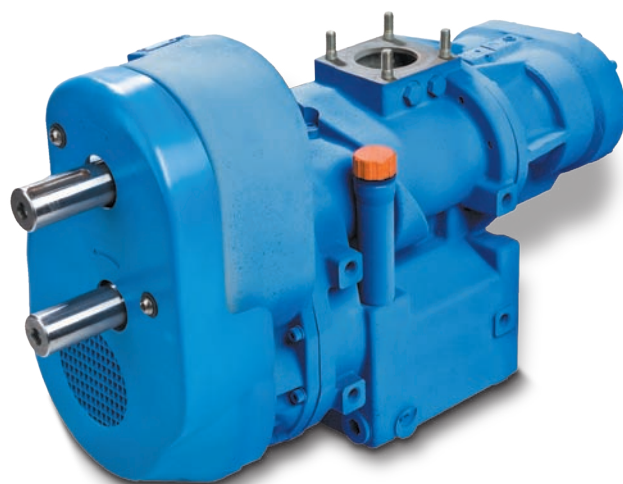
115 kg

**MISTRAL-13R/15L:**Either 780 – 1300 rpm CW 
or 900 – 1500 rpm CCW **MISTRAL-19R/22L:**Either 1170 – 1950 rpm CW 
or 1320 – 2250 rpm CCW **Dimensions:**

L 723 x H 442 x W 295 mm

Weight:

145 kg

Flow rates 365 to 750 m³/h



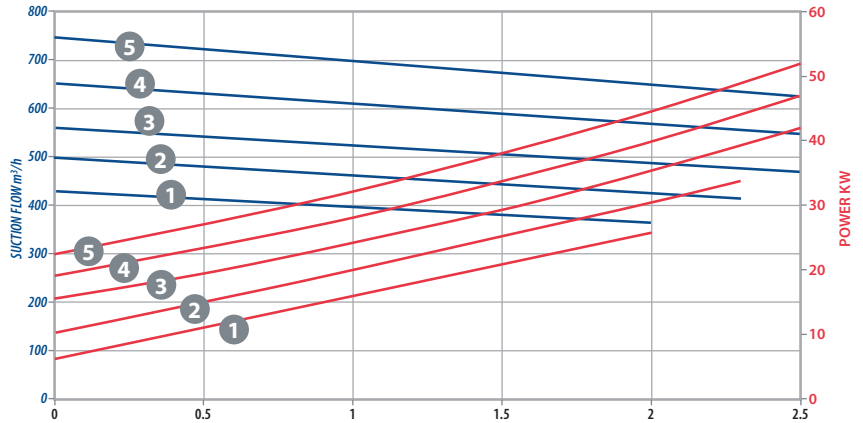
MISTRAL Screw Compressor

The Multipurpose Solution for Mounting Inside Truck Frame

Compressor Speed (rpm)

| Model | 1 | 2 | 3 | 4 | 5 |
|-------|------|------|------|------|------|
| 13R | 780 | 910 | 1040 | 1170 | 1300 |
| 15L | 900 | 1050 | 1200 | 1350 | 1500 |
| 19R | 1170 | 1365 | 1560 | 1755 | 1950 |
| 20R | 1200 | 1400 | 1600 | 1800 | 2000 |
| 22L | 1320 | 1580 | 1800 | 2035 | 2250 |
| 30R | 1800 | 2100 | 2400 | 2700 | 3000 |

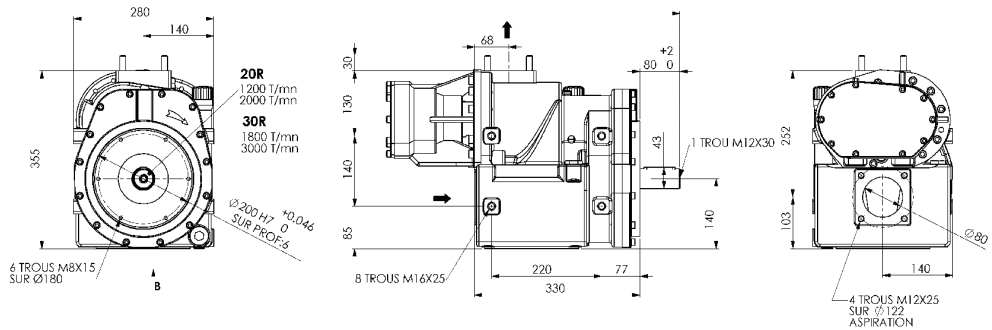
Flow (m³/hr) / Power (kW)



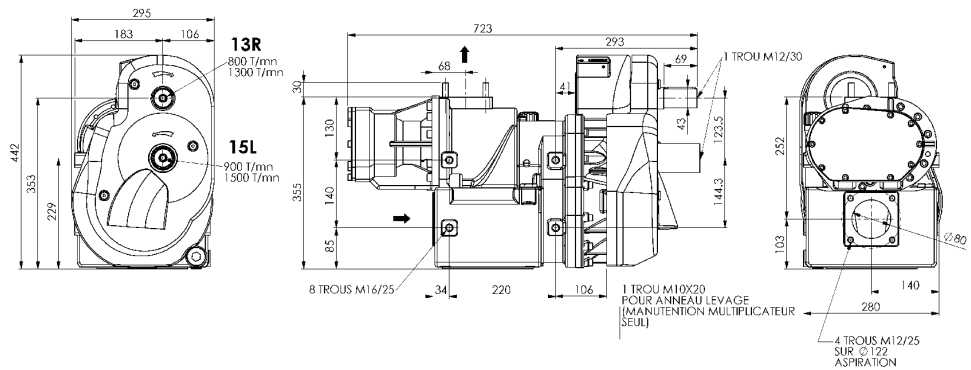
Torque / Pressure (Nm)

| Model | Pressure (bar) At Full Speed | | |
|-------|---------------------------------|-----|-----|
| | 1.5 | 2.0 | 2.5 |
| 13R | 280 | 320 | 380 |
| 15L | 240 | 280 | 330 |
| 19R | 190 | 220 | 260 |
| 20R | 180 | 210 | 250 |
| 22L | 160 | 190 | 230 |
| 30R | 120 | 140 | 170 |

MISTRAL Screw Compressor 20R and 30R



MISTRAL Screw Compressor with Multiplier 13R/15L and 19R/22L



ZI la Plaine des Isles • 2 rue des Caillottes
F-89000 AUXERRE - FRANCE
Tel: + 33.3.86.49.86.30 • Fax: + 33.3.86.46.42.10
contact@mouvex.com
mouvex.com

Authorized PSG® Partner: