

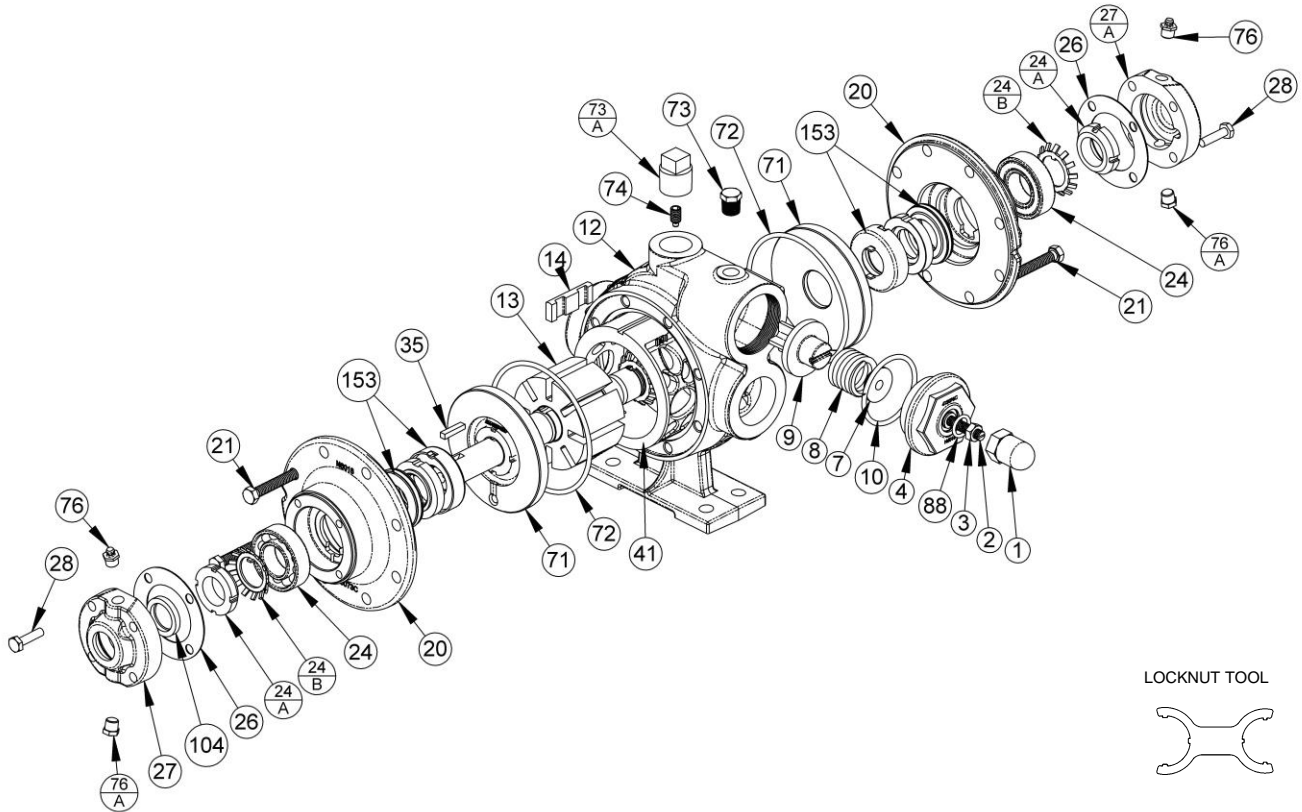
# BLACKMER PARTS LIST

## PUMP MODELS: SGL1.25A, SGRL1.25A, SGL1.5A

Keep with Instructions 801-A00 for Installation, Operation and Maintenance

962326 **PARTS LIST**  
Page 1 of 2 **801-A01**

Section 801  
Effective Jun 2024  
Replaces Aug 2014



Ref. No.	Description	Parts per Pump	Part No.	Ref. No.	Description	Parts per Pump	Part No.
1	Relief Valve (R/V) Cap	1	413200	27	Bearing Cover (Inboard)	1	043070
2	R/V Adjusting Screw	1	433909	27A	Bearing Cover (Outboard)	1	043071
3	R/V Adjusting Screw Locknut	1	922923	28	Bearing Cover Capscrews	8	920080
4	R/V Cover	1	413076	35	Shaft Key <sup>3</sup>	1	909152
7	R/V Spring Guide	1	423955		Liner – SGRL1.25A		183019
8	R/V Spring – (51 – 80 psi) (std)	1	471420	41	Liner – SGL1.25A	1	<sup>2</sup> 183020
	R/V Spring – (81 – 150 psi)		471428		Liner – SGL1.5A		<sup>2</sup> 183310
9	R/V Valve	1	453077	71	Disc	2	<sup>2</sup> 063075
	R/V Valve – Nickel Plated		452300		O-Ring Head (HNBR) (std)		<sup>1</sup> 702314
10	O-Ring R/V Cover (HNBR) (std)	1	<sup>1</sup> 702306	72	O-Ring Head (FKM)	2	701991
	O-Ring R/V Cover (FKM)		701970		O-Ring Head (PTFE)		702066
	O-Ring R/V Cover (PTFE)		702084		O-Ring Head (Neoprene)		702005
	O-Ring R/V Cover (Neoprene)		711987	73	Gage Plug (1/4" NPT)	1	908198
12	Casing – SGL1.25, SGRL1.25	1	013075	73A	Gage Plug (3/4" NPT)	1	908225
	Casing – SGL1.5		013376	74	Liner Setscrew	1	<sup>2</sup> 922088
13	Rotor & Shaft (Includes Ref. No's 24A & 24B)	1	<sup>2</sup> 262300	76	Grease Fitting	2	317815
14	Duravane (std)	8	<sup>1</sup> 093088	76A	Grease Relief Fitting	2	701992
	Laminate Vane		093089		O-Ring R/V Cap (HNBR) (std)		<sup>1</sup> 702300
20	Head	2	033073	88	O-Ring R/V Cap (FKM)	1	701908
21	Head Capscrews	16	920276		O-Ring R/V Cap (PTFE)		702074
24	Ball Bearing	2	<sup>1</sup> 903114		O-Ring R/V Cap (Neoprene)		702006
24A	Bearing Locknut	2	<sup>2</sup> 903534	104	Grease Seal	1	<sup>1</sup> 331927
24B	Bearing Lockwasher	2	<sup>1</sup> 903533	—	Tool - Locknut	—	903090
26	Bearing Cover Gasket	2	<sup>1</sup> 383075	—	Kit - Maintenance	—	898733
				—	Kit - Rebuild – SGRL1.25A	—	898832
				—	Kit – Rebuild – SGL1.25A	—	898833
				—	Kit – Rebuild – SGL1.5A	—	898834

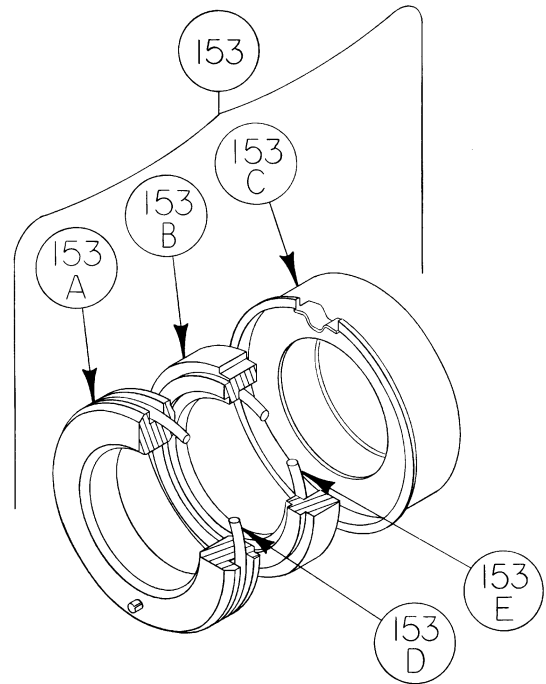
<sup>1</sup> Included in Maintenance Kits and Rebuild Kits

<sup>2</sup> Included in Rebuild Kits.

<sup>3</sup> Previous versions used Woodruff Key 901925.

**MECHANICAL SEAL**

Ref. No.	Part Name	Parts Per Pump	Part No.
153	Mechanical Seal Assembly (STD) Hardened Steel Stationary Seat, Custom Carbon Rotating Seal Face, HNBR O-Rings (SJCJ)	2	1 332602
	Mechanical Seal Assembly Hardened Steel Stationary Seat, Custom Carbon Rotating Seal Face, FKM O-Rings (SVCV)		332603
	Mechanical Seal Assembly Hardened Steel Stationary Seat, Custom Carbon Rotating Seal Face, Neoprene O-Rings (SPCP)		332606
	Mechanical Seal Assembly Hardened Steel Stationary Seat, Custom Carbon Rotating Seal Face, PTFE & FFKM O-Rings (SACK)		332604
153A	Stationary Seat (Hardened Steel)	2	**
153B	Rotating Seal Face (Custom Carbon)	2	**
153C	Jacket Assembly	2	**
153D	O-Ring – Stationary (HNBR) (STD)	2	702304
	O-Ring – Stationary (FKM)		711908
	O-Ring – Stationary (Neoprene)		711985
	O-Ring – Stationary (PTFE)		702076
153E	O-Ring – Rotating (HNBR) (STD)	2	702301
	O-Ring – Rotating (FKM)		701971
	O-Ring – Rotating (Neoprene)		702008
	O-Ring – Rotating (FFKM)		702172



<sup>1</sup> Included in Maintenance Kits and Rebuild Kits

Mechanical Seal (Ref No. 153) is only sold as a complete assembly.

\*\* Ref. No.'s 153/A, 153/B, 153/C are not available as separate parts.