

# BLACKMER GEAR PUMP

PARTS LIST  
MODELS: V2-55

Keep with Instructions 1903-a00 for Installation, Operation and Maintenance

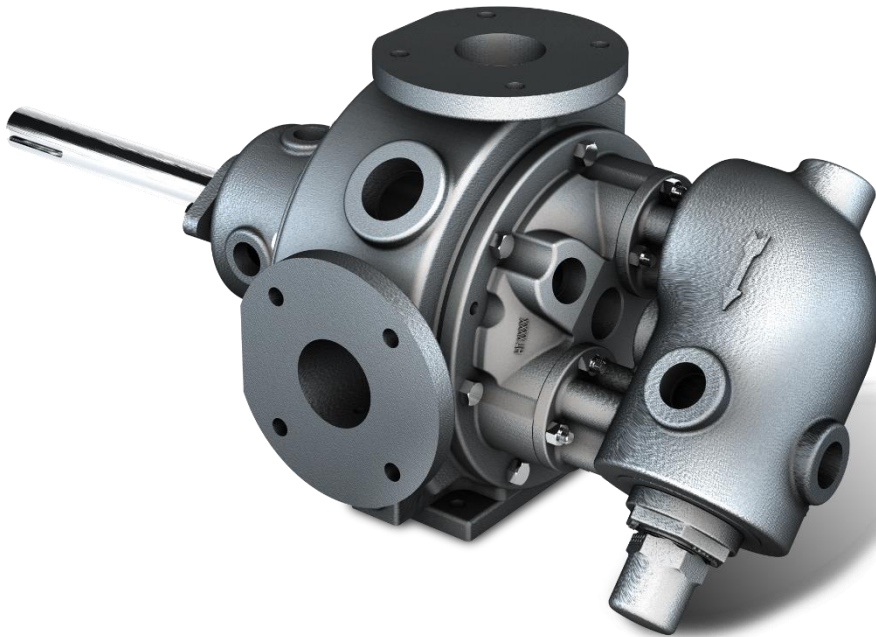
960724

INSTRUCTIONS NO. 1903-a01

Section  
Effective  
Replaces

1903  
October 2022  
September 2022

# V Series Internal Gear Pumps



Where Innovation Flows

*Blackmer*

1903-a01

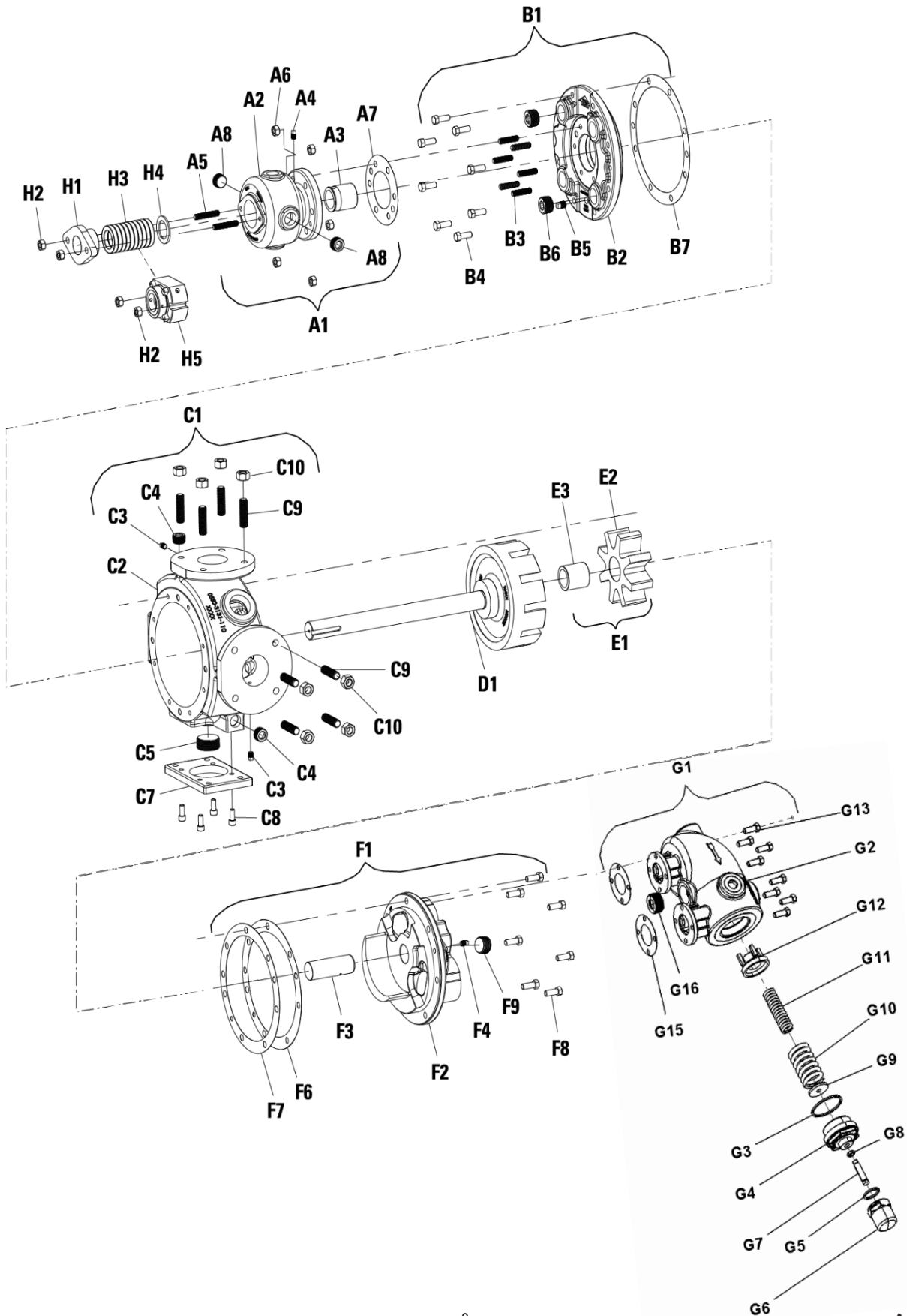
Always read the most current version of this manual before performing any work on or around this pump. The most current version of this manual is freely available on the web at [www.blackmer.com](http://www.blackmer.com)

Blackmer pumps are specifically configured for your unique application conditions. Those application conditions and the details of the pump configuration were documented during the ordering process. Keep that information available in a safe place, as it may be needed when troubleshooting pump problems or when ordering spare parts or repairs.

Blackmer Gear Pumps are covered by one or more of the following patents: U.S. Patent Nos. 7549205, 7137793, 7183683, 8,608,465B2 Australian Patent No. AU2005233534B2; Korean Patent No. 10-2006-7023162; Mexican Patent No. PA/2006/011436, Russian Patent No. 2006138540(041952); China Patent No. ZL 201280031563.6; and other patents pending.

# EXPLODED VIEW AND PARTS LISTING

V2-55



## Parts Listing

Item	Description	V2-55	Quantity	Material
A1	ROTOR BEARING SLEEVE, ASM, JACKETED, V-55, CAST IRON (INCLUDES A2 THRU A8, B3, H2)	0550-2040-110	1	CAST IRON
A2	ROTOR BEARING SLEEVE, JACKETED, V-55, CAST IRON	0550-2140-110	1	CAST IRON
A3	BUSHING, RBS, V-55, BRONZE	0550-2840-320	1	BRONZE
A4	PLUG, PIPE, 1/8" NPT, CARBON STEEL/ZINC PLATED	PLUG-013NSH-230	1	STEEL
A5	STUD, DOUBLE END, 7/16"-14 X 2-1/4", CARBON STEEL/ZINC PLATED	T09C438B25WA2A2	2	STEEL
A6	NUT, HEX, CENTERLOCK, 7/16"-14, CARBON STEEL/ZINC PLATED	N04C438375WA2A2	6	STEEL
A7	GASKET, RBS, V-55, INTERFACE TS-9003	0550-2930-950	1	INTERFACE TS-9003
A8	PLUG, PIPE, 3/4" NPT, CARBON STEEL/ZINC PLATED	PLUG-075NSH-230	2	STEEL
B1	REAR PLATE, ASM, JACKETED, V-55, CAST IRON (INCLUDES B2 THRU B7, A6, A7)	0550-3300-110	1	CAST IRON
B2	REAR PLATE, JACKETED, V-55, CAST IRON	0550-3330-110	1	CAST IRON
B3	STUD, DOUBLE END, 7-16"-14 X 1-3/4", CARBON STEEL/ZINC PLATED	T09C438A75WA2A2	6	STEEL
B4	SCREW, CAP, HEX, 7/16"-14 X 1-1/8", CARBON STEEL/ZINC PLATED	S01C438A12WA2A2	8	STEEL
B5	PLUG, PIPE, 1/4" NPT, CARBON STEEL/ZINC PLATED	PLUG-025NSH-230	1	STEEL
B6	PLUG, PIPE, 1" NPT, CARBON STEEL/ZINC PLATED	PLUG-100NSH-230	2	STEEL
B7	GASKET, BRACKET/REAR PLATE, G1-55/69, V-55 INTERFACE TS-9003	0550-2900-950	1	INTERFACE TS-9003
C1	CASE, ASM, JACKETED, V-55, 2.5" ANSI, CAST IRON (INCLUDES C2 THRU C10, F6-F8, B4, B7)	0550-3031-110	1	CAST IRON
C2	CASE, JACKETED, G/V-55, 2.5" ANSI, CAST IRON	0550-3131-110	1	CAST IRON
C3	PLUG, PIPE, 1/8" NPT, CARBON STEEL/ZINC PLATED	PLUG-013NSH-230	2	STEEL
C4	PLUG, PIPE, 3/4" NPT, CARBON STEEL/ZINC PLATED	PLUG-075NSH-230	2	STEEL
C5	PLUG, PIPE, 1-1/2" NPT, CARBON STEEL/ZINC PLATED	PLUG-150NSH-230	1	STEEL
C7	FOOT, CASE, V-55, CARBON STEEL	0550-3400-230	1	STEEL
C8	SCREW, CAP, HEX SOCKET HEAD, 3/8"-16 X 3/4", CARBON STEEL/ZINC PLATED	S14C375750WA2A2	4	STEEL
C9	STUD, DOUBLE END, 5/8"-11 X 2-1/4", CARBON STEEL/ZINC PLATED	T09C625B25WA2A2	8	STEEL
C10	NUT, HEX, 5/8"-11, CARBON STEEL/ZINC PLATED	N04C625562WA2A2	8	STEEL
D1	ROTOR/SHAFT, ASM, V-55, A, DUCTILE IRON/CARBON STEEL	0550-4040-121	1	DUCTILE IRON/STEEL
	ROTOR/SHAFT, ASM, V-55, B, DUCTILE IRON/CARBON STEEL	0550-4041-121	1	DUCTILE IRON/STEEL
	ROTOR/SHAFT, ASM, V-55, C, DUCTILE IRON/CARBON STEEL	0550-4042-121	1	DUCTILE IRON/STEEL
E1	GEAR, IDLER, ASM, G/V-55, CAST IRON/BRONZE (INCLUDES E2 AND E3)	0550-5010-110	1	CAST IRON/BRONZE
E2	GEAR, IDLER, G/V-55, CAST IRON	0550-5100-110	1	CAST IRON
E3	BUSHING, IDLER, G/V-55, BRONZE	0550-5800-320	1	BRONZE
F1	HEAD, ASM, G/V-55, CAST IRON/HARDENED STEEL (INCLUDES F2 THRU F7, G13-G15)	0550-6035-110	1	CAST IRON/STEEL
	HEAD, ASM, JACKETED, G/V-55, CAST IRON/HARDENED STEEL	0550-6030-110	1	CAST IRON/STEEL
F2	HEAD, G/V-55, CAST IRON	0550-6110-110	1	CAST IRON
	HEAD, JACKETED, G/V-55, CAST IRON	0550-6130-110	1	CAST IRON
F3	PIN, IDLER, G/V-55, HARDENED STEEL	0550-6200-231	1	HARDENED STEEL
F4	PLUG, PIPE, 1/8" NPT, CARBON STEEL/ZINC PLATED	PLUG-013NSH-230	1	STEEL
F6	GASKET, HEAD, G1-55/69/82, V-55, BRACKET, G1-82, .015, INTERFACE TS-9003	0550-6900-950	1	INTERFACE TS-9003
F7	GASKET, HEAD, V-55, .005,	0550-6901-955	2	NOMEX 410
F9	PLUG, PIPE, 1" NPT, CARBON STEEL/ZINC PLATED	PLUG-100NSH-230	1	STEEL
F8	SCREW, CAP, HEX, 7/16"-14 X 1-1/8", CARBON STEEL/ZINC PLATED	S01C438A12WA2A2	7	STEEL
G1	VALVE, COVER, ASM, G1-55/69/82, V-55, STAINLESS STEEL/CARBON STEEL (INCLUDES G2, G13 THRU G15)	0550-7000-230	1	STEEL/STAINLESS STEEL
	VALVE, ASM, G1-55/69/82, V-55, 60 PSI, CAST IRON (INCLUDES G2 THRU G16)	0550-7001-110	1	CAST IRON
	VALVE, ASM, G1-55/69/82, V-55, 90 PSI, CAST IRON (INCLUDES G2 THRU G16)	0550-7002-110	1	CAST IRON
	VALVE, ASM, G1-55/69/82, V-55, 100 PSI, CAST IRON (INCLUDES G2 THRU G16)	0550-7003-110	1	CAST IRON
	VALVE, ASM, JACKETED, G1-55/69/82, V-55, 60 PSI, CAST IRON (INCLUDES G2 THRU G16)	0550-7031-110	1	CAST IRON
	VALVE, ASM, JACKETED, G1-55/69/82, V-55, 90 PSI, CAST IRON (INCLUDES G2 THRU G16)	0550-7032-110	1	CAST IRON
	VALVE, ASM, JACKETED, G1-55/69/82, V-55, 100 PSI, CAST IRON (INCLUDES G2 THRU G16)	0550-7033-110	1	CAST IRON
G2	VALVE, BODY, G1-55/69/82, V-55, CAST IRON	0550-7100-110	1	CAST IRON
	VALVE, BODY, JACKETED, G1-55/69/82, V-55, CAST IRON	0550-7130-110	1	CAST IRON
	VALVE, COVER, G1-55/69/82, V-55, STAINLESS STEEL	0550-7101-250	2	STEEL/STAINLESS STEEL
G3	GASKET, VALVE, BONNET, G1-24/32/55/69/82, V-55, KLINGERSIL C-4401	0240-7910-951	1	KLINGERSIL C-4401
G4	VALVE, BONNET, G1-24/32/55/69/82, V-55, CAST IRON	0240-7200-110	1	CAST IRON
G5	GASKET, VALVE, CAP, G1-24/32/55/69/82, V-55, KLINGERSIL C-4401	0240-7920-951	1	KLINGERSIL C-4401

Item	Description	V2-55	Quantity	Material
G6	VALVE, CAP, G1-24/32/55/69/82, V-55, CAST IRON	0240-7300-110	1	CAST IRON
G7	VALVE, ADJ SCREW, G1-24/32/55/69/82, V-55, CARBON STEEL	0240-7700-230	1	STEEL
G8	VALVE, LOCK NUT, G1-24/32/55/69/82, V-55, CARBON STEEL	0240-7710-230	1	STEEL
G9	VALVE, SPRING GUIDE, G1-24/32/55/69/82, V-55, CARBON STEEL	0240-7500-230	1	STEEL
G10	VALVE, SPRING, V-55 (100 PSI)	0240-7602-250	1	STAINLESS STEEL
G11	VALVE, SPRING, V-55 (60 PSI)	0240-7600-250	1	STAINLESS STEEL
	VALVE, SPRING, V-55 (90 PSI)	0240-7601-250	1	STAINLESS STEEL
G12	VALVE, POPPET, G1-24/32/55/69/82, V-55, CAST IRON	0240-7400-110	1	CAST IRON
G13	SCREW, CAP, HEX 3/8"-16 X 3/4" CARBON STEEL/ ZINC PLATED	S01C375750WA2A2	8	STEEL
G15	GASKET, VALVE, G1-55/69/82, V-55, INTERFACE TS-9003	0550-7900-950	2	INTERFACE TS-9003
G16	PLUG, PIPE, 1-1/4" NPT, CARBON STEEL/ZINC PLATED	PLUG-125NSH-230	3	STEEL
H1	GLAND, PACKING, V-55, CAST IRON	0550-8230-110	1	CAST IRON
H2	NUT, HEX, CENTERLOCK, 7/16"-14, CARBON STEEL/ZINC PLATED	N04C438375WA2A2	2	STEEL
H3	PACKING, ASM, V-55, 10 RINGS, PTFE-GRAPHITE	0550-8100-925K	1	PTFE-GRAPHITE
	PACKING, ASM, V-55, 10 RINGS, WEDGEE PTFE-GRAPHITE	0550-8102-932	1	VARIOUS
H4	WASHER, PACKING RETAINING, V-55, CARBON STEEL	0550-8150-230	1	STEEL
H5	SEAL, TRIPLE LIP SEAL, V-55, SIL CARBIDE/FFKM/PTFE	0550-8002-929	1	TEFLON/SIC/FFKM
	SEAL, TRIPLE LIP SEAL, V-55, SIL CARBIDE/TFE/P/PTFE	0550-8002-933	1	TEFLON/SIC/TFE/P





PSG Grand Rapids  
1809 Century Avenue SW  
Grand Rapids, MI 49503 USA  
P: +1 (616) 241-1611 • F: +1 (616) 241-3752  
info@blackmer.com  
blackmer.com



Where Innovation Flows

---

PSG® reserves the right to modify the information and illustrations contained in this document without prior notice. This is a non-contractual document. 05-2018