

LB601-LU & LB361-LU

LB Series

Liquid Transfer and Vapor Recovery Units driven @ 715 RPM and 745 PRM

Gas

Propane
 $n = 1.13$
 $MW = 44.1$

Inlet

71 - 114 psig
 (5 - 8 kg/cm² g)
 Ambient Temperature

Outlet

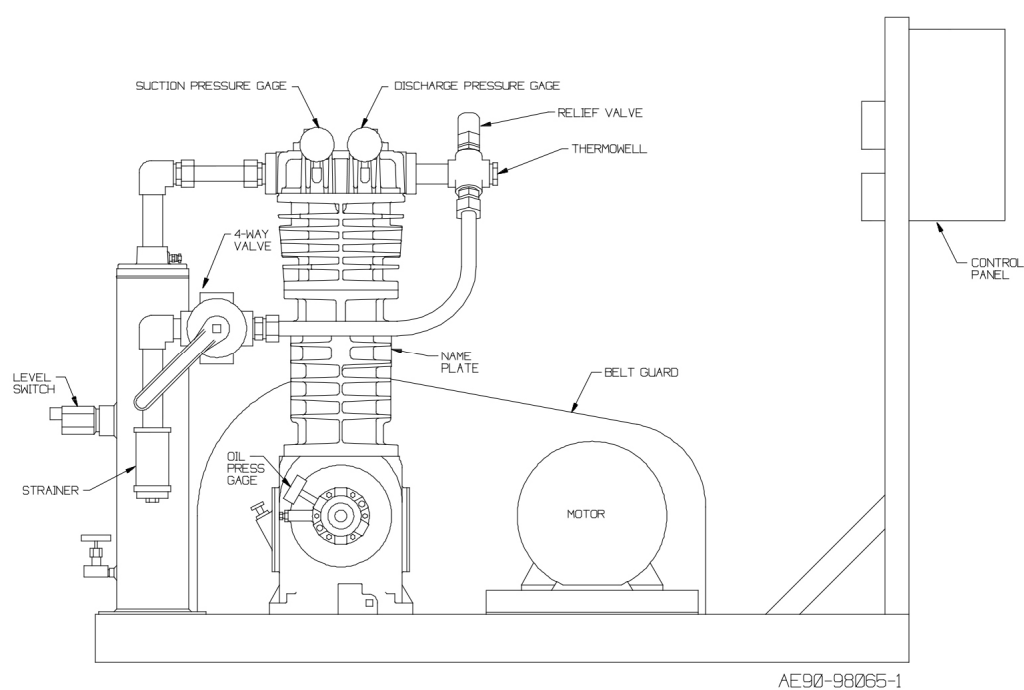
213 - 261 psig
 (15 - 18.4 kg/cm² g)

Compressor Construction

Buna-N O-rings
 Aluminum Gaskets

Accessories

30 HP Motor (15 HP on the LB361)
 Liquid Trap with Float Switch
 Suction strainer
 4-way flow control valve
 High Discharge Temperature Switch with Thermowell
 Low Oil Pressure switch
 Discharge relief valve
 Pressure Gauges for suction and discharge gas pressures and crankcase oil pressure
 All electrical devices are explosion proof and are on 50 Hz operation



Installation Example

Two LB601 and one LB361-LU gas compressors are being used to transfer propane from rail tank car to storage in China. These are typical propane transfer compressors with both a liquid trap and a 4-way flow control valve. The trap prevents entry of liquid into the compressor and the 4-way valve allows both liquid transfer and recovery of vapors. The strainer, level switch, temperature switch, oil pressure switch, and relief valve all help protect the compressor from various potential problems.