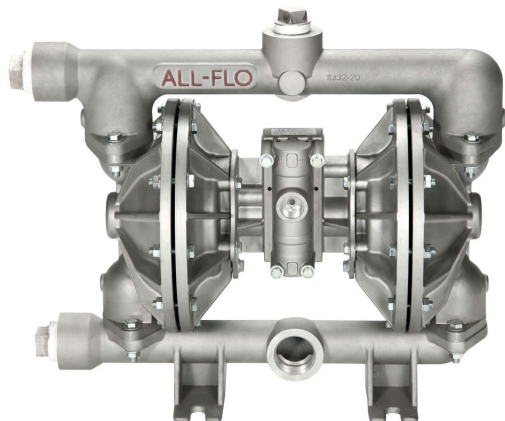


SPECIFICATIONS SHEET

A150 – 1-1/2 in. METAL PUMP



Air Inlet
3/4" FNPT

Liquid Inlet
1-1/2"

Liquid Discharge
1-1/2"

Connection Type
FNPT/FBSPT (Threaded)
ANSI/DIN (Flanged)

Max Suction Lift Capability
22 ft-H₂O (6.7 m-H₂O) Dry
31 ft-H₂O (9.4 m-H₂O) Wet

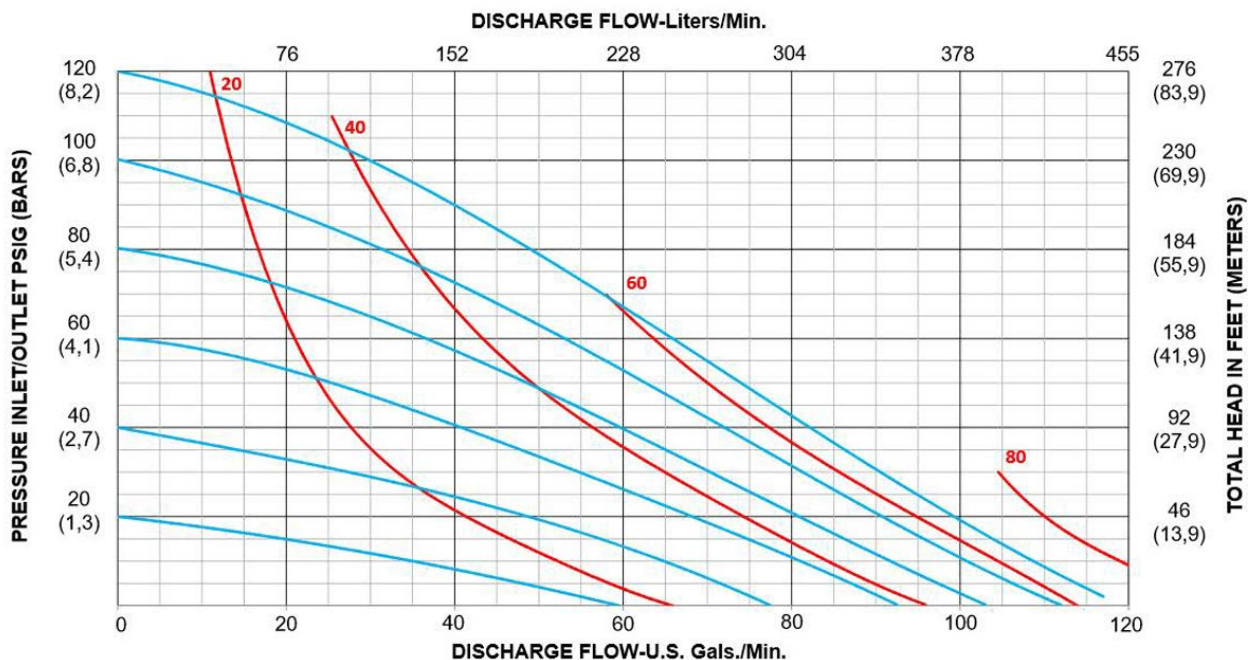
Max Flow Rate
115 gpm (435 lpm)

Max Pressure
120 psi (8.2 bar)

Max Solids Dia.
1/4" (6.4 mm)

Disp. Per Stroke
0.30 gal (1.15 L)

Weight
Alum: 45 lbs (20 kg)
SS (Threaded): 70 lbs (32 kg)
SS (Flanged): 84 lbs (38 kg)



PSG
All-Flo
22069 Van Buren Street
Grand Terrace, CA 92313, USA

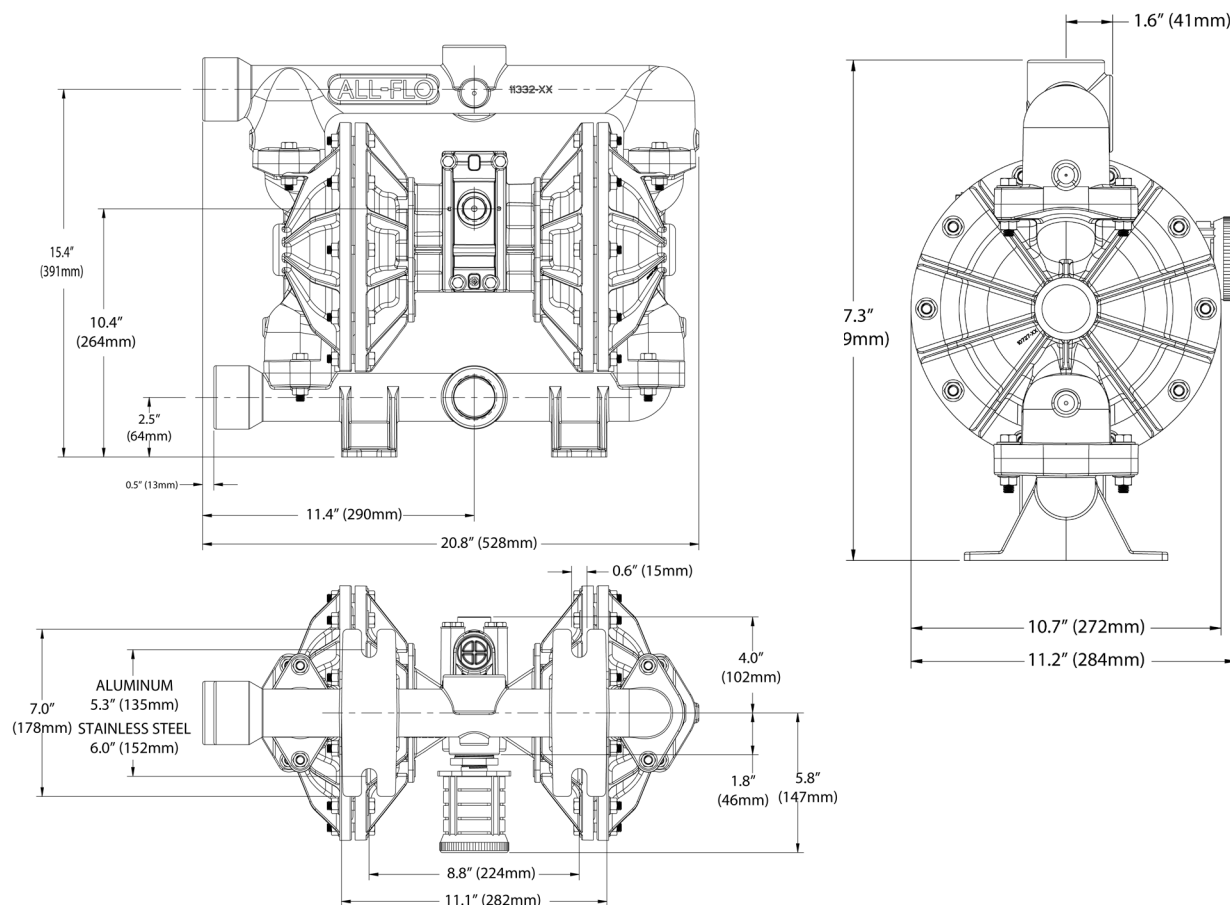
P: +1 (440) 354-1700
F: +1 (440) 354-9466

all-flo.com



SPECIFICATIONS SHEET

A150 – 1-1/2 in. METAL PUMP



Popular Models

A150-NAA-GNPN-B30	Aluminum, NPT, Bunalast™ Diaphragm, Buna-N Ball, Polypropylene Seat, Buna-N O-Ring, Zinc Plated Hardware
A150-NAA-SSPE-B30*	Aluminum, NPT, Santoprene® Diaphragm, Santoprene® Ball, Polypropylene Seat, EPDM O-Ring, Zinc Plated Hardware
A150-NAA-TTYT-B30*	Aluminum, NPT, PTFE Diaphragm, PTFE Ball, Polypropylene Seat, FKM O-Ring, Zinc Plated Hardware
A150-FA3-SS3E-B70	Stainless Steel, ANSI/DIN Flange, Santoprene® Diaphragm, Santoprene® Ball, PVDF Seat, EPDM O-Ring, Stainless Steel Hardware
A150-FA3-TT3T-B70	Stainless Steel, ANSI/DIN Flange, PTFE Diaphragm, PTFE Ball, PVDF Seat, PTFE O-Ring, Stainless Steel Hardware

*Pump model is part of the Ready2Ship Program



PSG
All-Flo
22069 Van Buren Street
Grand Terrace, CA 92313, USA

P: +1 (440) 354-1700
F: +1 (440) 354-9466

all-flo.com

