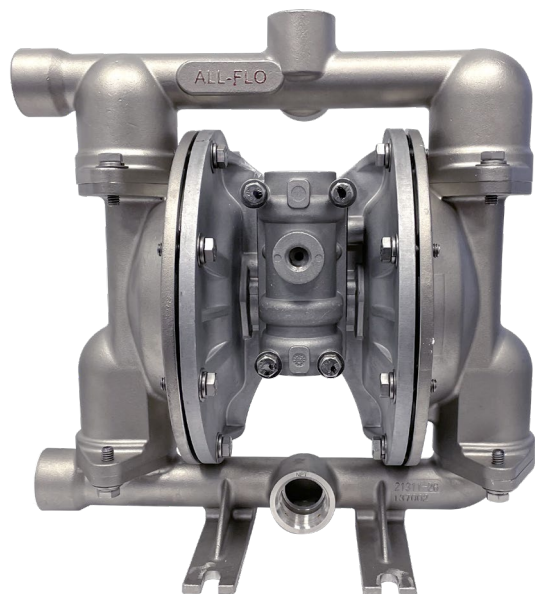


SPECIFICATIONS SHEET

A101 – 1 in. Metal SS PUMP



Air Inlet
1/4" FNPT

Liquid Inlet
1"

Liquid Discharge
1"

Connection Type
FNPT/FBSPT (Threaded)

Max Suction Lift Capability
17 ft-H₂O (5.2 m-H₂O) Dry
30 ft-H₂O (9.1 m-H₂O) Wet

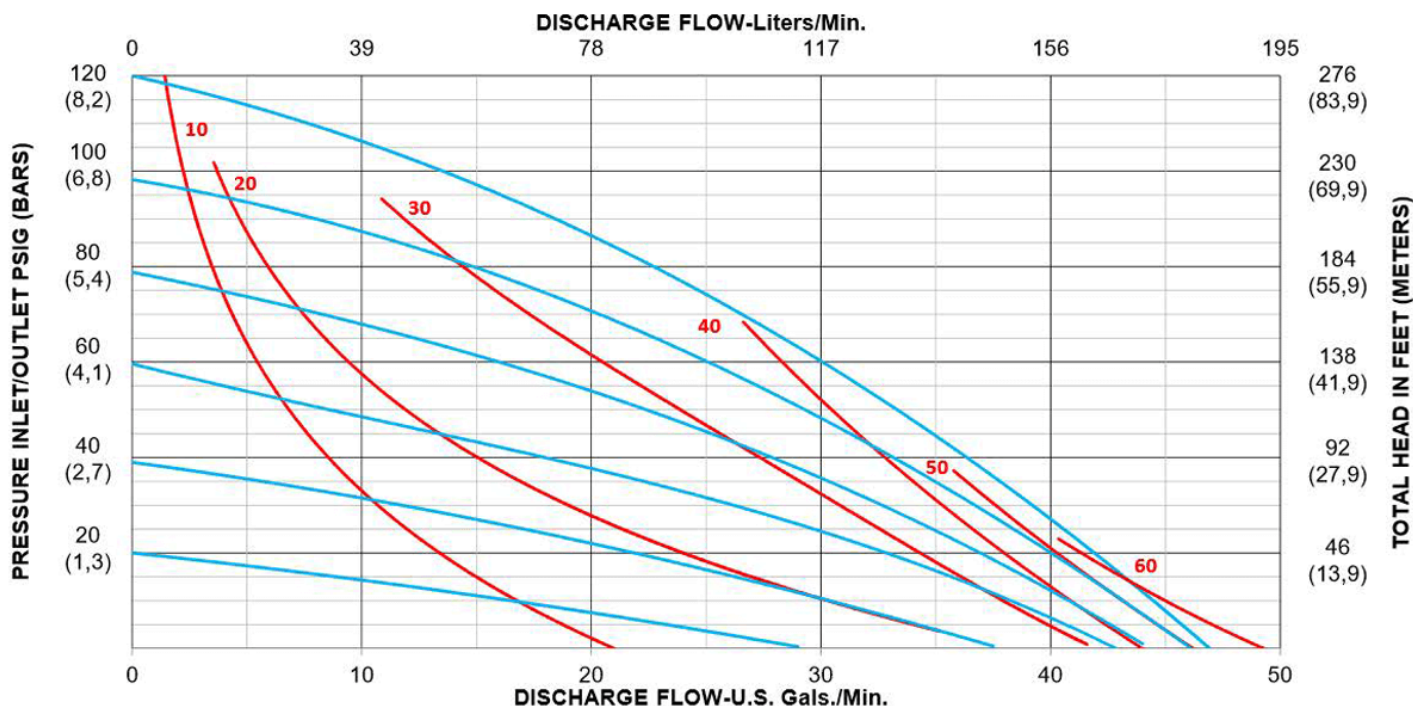
Max Flow Rate
48 gpm (182 lpm)

Max Pressure
120 psi (8.2 bar)

Max Solids Dia.
1/4" (6.4 mm)

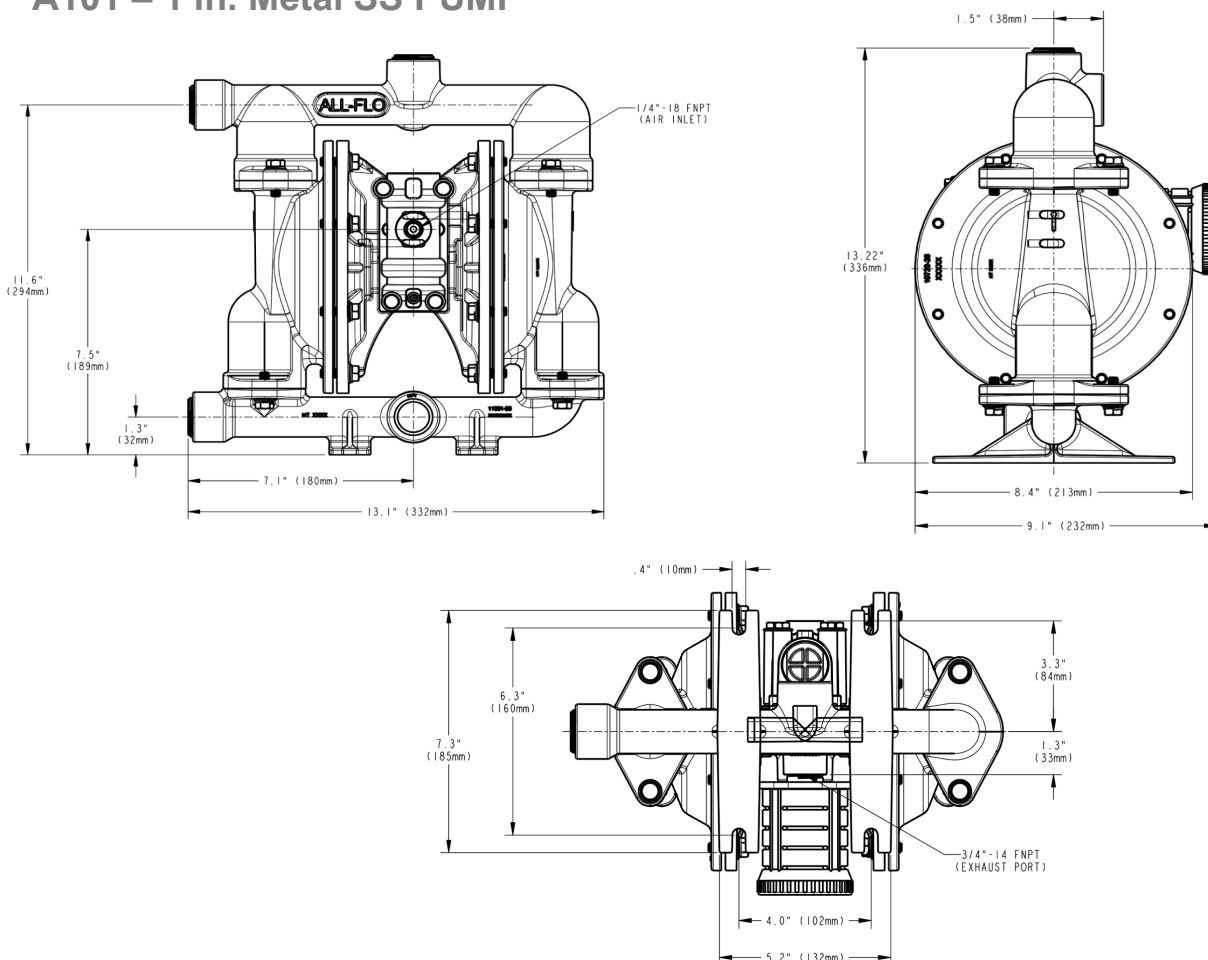
Disp. Per Stroke
0.07 gal (0.28 L)

Shipping Weight
SS: 36 lbs (16 kg)



SPECIFICATIONS SHEET

A101 – 1 in. Metal SS PUMP



Construction

Wet End:	Stainless Steel
Air End:	Aluminum, PTFE Coating Aluminum
Diaphragms:	Bunast [™] , PTFE, Santoprene [®] , Buna-N, FKM
Balls:	Bunast [™] , PTFE, Santoprene [®] , Buna-N, FKM, Stainless Steel
Seats:	Aluminum, Stainless Steel, Polypropylene, Nylon
O-Rings:	Buna-N, EPDM, PTFE, FKM
Hardware:	Zinc Plated Steel, Stainless Steel
Muffler:	Plastic, Metal

Popular Models

A101-NA3-SS3E-B70	Stainless Steel, NPT, Santoprene [®] Diaphragm, Santoprene [®] Ball, Stainless Steel Seat, EPDM O-Ring, Stainless Steel Hardware
A101-NA3-TT3T-B70*	Stainless Steel, NPT, PTFE Diaphragm, PTFE Ball, Stainless Steel Seat, FKM O-Ring, Stainless Steel Hardware

*Pump model is part of the Ready2Ship program



PSG
All-Flo
22069 Van Buren Street
Grand Terrace, CA 92313, USA

P: +1 (440) 354-1700
F: +1 (440) 354-9466

all-flo.com

