

All-Flo™ AODD Pumps for Paints and Coatings Reduce Operating Cost, Downtime and Air Consumption



Where Innovation Flows

ALL-FLO

In today's highly competitive paint and coatings marketplace, it is imperative that manufacturers control costs and eliminate production downtime. The All-Flo air-operated double-diaphragm (AODD) pump remains a crucial piece of equipment in the manufacture of paint and coatings due to its high level of performance in terms of reliability, product-loss prevention, environmental protection and energy efficiency.

FLEXIBILITY AND PERFORMANCE

- Flow Rates: Up to 235 gpm (890 lpm)
- Pressure: Up to 120 psi (8.2 bar)
- Sizes: 1/4" to 3" models
- Capabilities: Self-Priming, portable, seal-less, dry-run and dead-head capable and low shear fluid transfer

APPLICATIONS

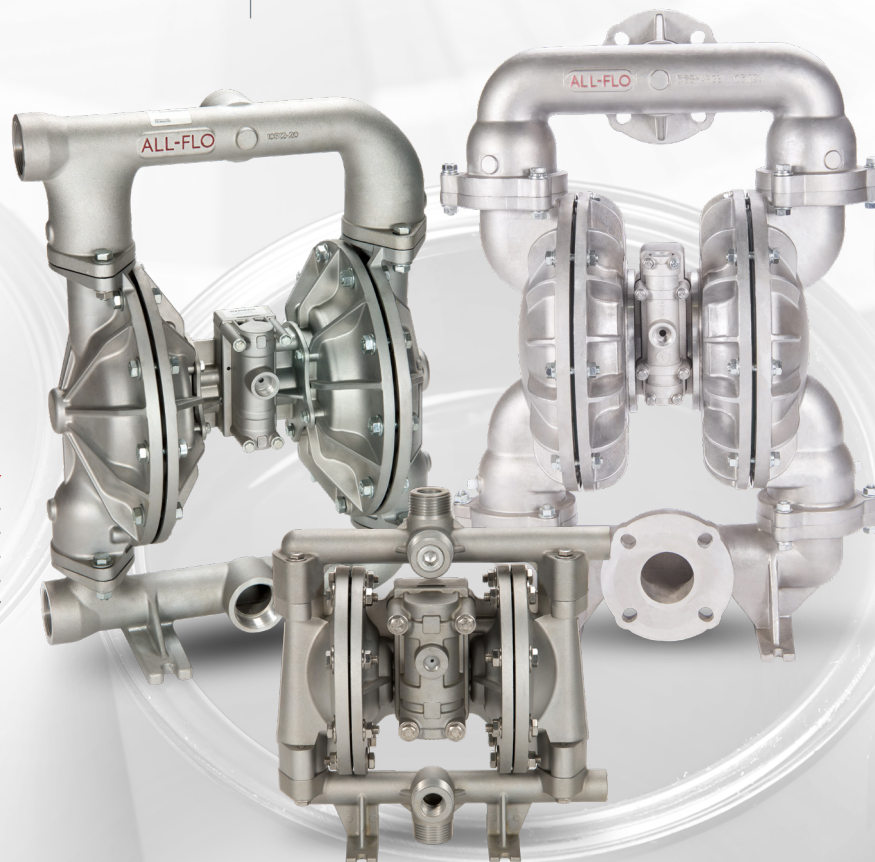
- Resin/Solvent Transfer
- Pigment Paste
- Filtration
- Bulk Material Loading/Unloading
- Container Filling

GENTLE HANDLING

All-Flo AODD Pumps provide gentle, low-shear fluid transfer that prevents pigment breakdown and foaming.

ATEX-RATED FOR SAFETY

All-Flo metallic and conductive plastic pumps are ATEX-rated, ensuring safe operation in potentially explosive environments when properly grounded.

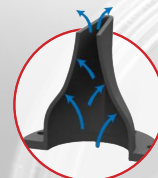


HIGHLY COMPATIBLE

Wide range of materials of construction to handle the variety of fluids involved in the paints and coating manufacturing process. Wetted path available in aluminum and stainless steel to pair with Santoprene, Bunalast, PTFE and FKM diaphragms.

SOLID-PASSING CAPABILITIES

Ideal for handling resins, fillers and settled pigments, standard All-Flo AODD Pumps can pass solids up to 7/16" (11 mm) and MAX-PASS® Pumps can pass solids of 3/4" (19 mm).



SIMPLE AND LOW MAINTENANCE

With only three moving parts in the standardized air valve that is used across the product line, All-Flo AODD Pumps feature a simple design that minimizes maintenance cost and downtime.

MAX-PASS® valves available on the 3/8", 1/2" and 1" pumps to increase the solids passage to 1/4", 3/8" and 3/4", respectively.

All-Flo Accessories to Maximize Performance



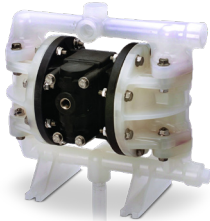
PDM SERIES METAL PULSATION DAMPENERS

- Reduce peaks of discharge pressure and flow
- Reduce system vibration and load on the pump
- Protect downstream instrumentation and extend equipment life



FILTER/REGULATOR GAUGES

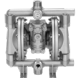




- Clean, dry and regulate compressed air to optimize air usage, prevent air valve damage and allow for greater flow rate control
- 5 micron bronze filtering element
- Separator and shield for efficient moisture separation
- Available air supply line sizes: 1/4", 1/2", 3/4"



DRUM PUMP KITS

- Mount directly on drum for easy unloading
- 40" long suction tube
- Bung adapter for a standard 55-gallon drum
- Available pump sizes: 1/4", 1/2", 3/4"
- Materials: Polypropylene, PVDF, Aluminum, Stainless Steel

TRUSTED ALL-FLO AODD PUMPS FOR PAINTS AND COATINGS

	Pump	Size	Common Materials of Construction	Connection	Max. Flow	Max. Particle Size	Max. Temp	Max. Air Pressure
	A050/S050	1/2"	Aluminum with PTFE or Santoprene Elastomers	FNPT (FBSPT)	15 gpm (56.8 lpm)	A050 - 1/4" (6.4 mm) S050 - 3/8" (9.5 mm)	189°F (87°C)	120 psi (8.2 bar)
	A100/S100	1"	Aluminum with PTFE or Santoprene Elastomers	FNPT (FBSPT)	48 gpm (182 lpm)	A100 - 1/4" (6.4 mm) S100 - 3/4" (19 mm)	189°F (87°C)	120 psi (8.2 bar)
	A150	1-1/2"	Aluminum with PTFE or Santoprene Elastomers	FNPT (FBSPT), ANSI / DIN FLANGE	115 gpm (435 lpm)	1/4" (6.4 mm)	189°F (87°C)	120 psi (8.2 bar)
	A200	2"	Aluminum with PTFE or Santoprene Elastomers	FNPT (FBSPT), ANSI / DIN FLANGE	190 gpm (719 lpm)	1/4" (6.4 mm)	189°F (87°C)	120 psi (8.2 bar)
	A300	3"	Aluminum with PTFE or Santoprene Elastomers	FNPT (FBSPT), ANSI / DIN	235 gpm (890 lpm)	7/16" (11 mm)	189°F (87°C)	120 psi (8.2 bar)

Always check chemical compatibility of the process fluid with the materials of construction of the pump before use.

ALF-17010-F-01

Copyright 2026 PSG®, a Dover company

Authorized PSG® Partner:

Where Innovation Flows 

 ALL-FLO

PSG
22069 Van Buren Street
Grand Terrace, CA 92313-5651 USA
P: +1 (440) 354-1700 • F: +1 (440) 354-9466
all-flo.com