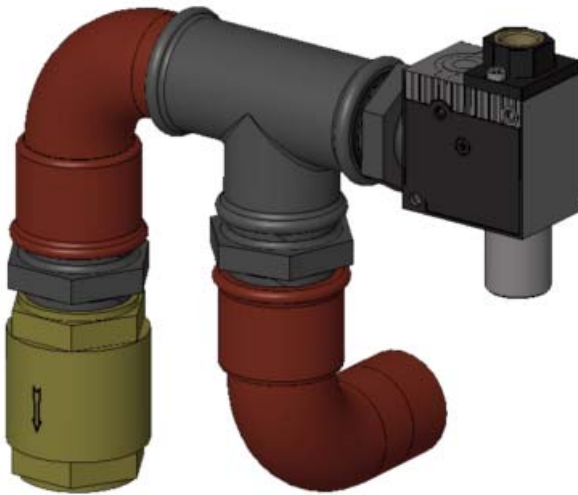


## *Venturi ejector vacuum kit Pumps HD25 to HD100*



**INSTALLATION**

**OPERATION**

**WARRANTY :**

Venturi ejector vacuum kits for ABAQUE pumps are covered 24 months by warranty within the limits mentioned in our General Sales Conditions. In case of a use other than that mentioned in the Instructions manual, and without preliminary agreement of ABAQUE, warranty will be canceled.



Z.I. La Plaine des Isles - F 89000 AUXERRE - FRANCE  
Tél. : +33 (0)3.86.49.86.30 - Fax : +33 (0)3.86.49.87.17  
contact.abaque@psgdover.com • www.psgdover.com/abaque

Your distributor :

# VENTURI EJECTOR VACUUM KIT ABAQUE

## SAFETY INSTRUCTIONS, INSTALLATION AND OPERATION

### Definition of safety symbols



This is a SAFETY ALERT SYMBOL.

When you see this symbol on the product, or in the manual, look for one of the following signal words and be alert to the potential for personal injury, death or major property damage.



Warns of hazards that **WILL** cause serious personal injury, death or major property damage.



Warns of hazards that **CAN** cause serious personal injury, death or major property damage.



Warns of hazards that **CAN** cause personal injury or property damage.

#### NOTICE

Indicates special instructions which are very important and must be followed.

#### NOTES

The numbers written after part names correspond to reference numbers in the spare parts lists..

Photos and drawings used in this IOM are not contractual.

### TABLE OF CONTENTS

*Page*

<b>1. INSTALLATION</b> .....	<b>3</b>
1.1 Pump window replacement (except on HD25) .....	3
1.2 Vacuum kit assembly .....	3
1.3 Vacuum kit mounting on pump .....	4
<b>2. OPERATION</b> .....	<b>4</b>

### TECHNICAL CHARACTERISTICS

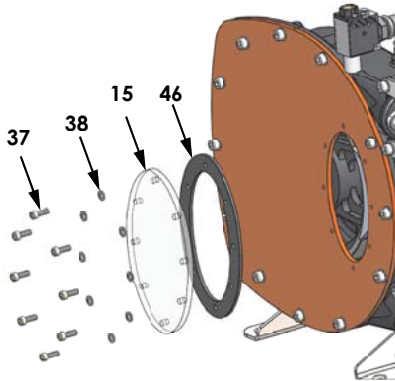
- Supply :
  - **Non-lubricated filtered air, pressure 2 to 6 bar (29 to 87 psi)**
- Optimum pressure :
  - **4 bar (58 psi)**
- Temperature :
  - **-10 → 80 °C / 14 → 186°F**
- Air consumption :
  - **67 NI/min**
- Maximum vacuum :
  - **0,5 bara in the pump body once the kit installed**
- **NON ATEX CERTIFIED**

# 1. INSTALLATION

## 1.1 Pump window replacement (except on HD25)

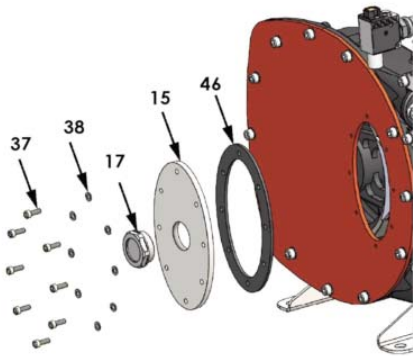
**Do not operate vacuum kit with standard window (except on HD25) as it may break under vacuum effect.**

Drain pump lubricant (see pump Instructions).  
 Remove screws 37 and washers 38.  
 Remove window.  
 Check gasket 46 and replace it if necessary (see pump Parts list).

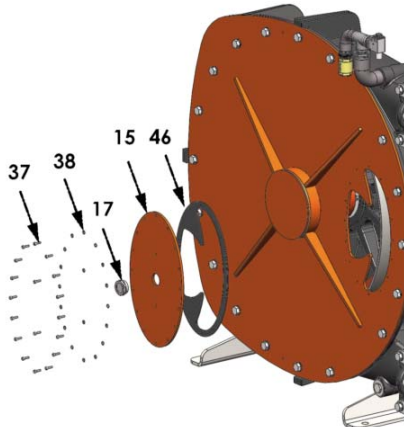


Put back gasket 46.  
 Put window adaptor 15.  
 Put back screws 37 with their washers 38.

**HD25 HD32 HD40 HDX40 HD50 HD65 :**



**HDX65 HDX80 HD80 HD100 (reinforced cover) :**

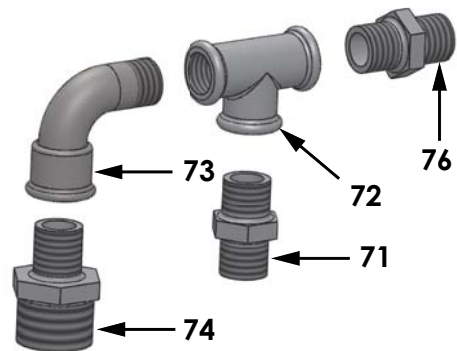


Put small window gasket 46A.  
 Put small window 15A.  
 Put screws 37A with their washers 38A.  
 Tighten screws moderately to avoid breaking small window 15A.

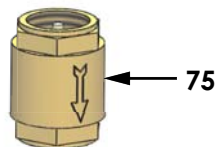
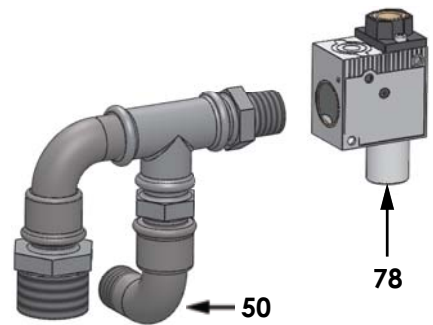
## 1.2 Vacuum kit assembly

**Assemble all parts with Loctite® 572\* pipe sealant or equivalent. Wait minimum 3 hours before submitting assembly to vacuum or pressure.**

Assemble nipples 76 and 71 on T-junction 72.  
 Assemble nipple 74 on elbow 73 and the resulting assembly on T-junction 72.



**HD50 HD65 HDX65 HDX80 HD80 HD100 :**  
 Assemble elbow 50 on resulting assembly for installation at the rear of the pump. Make sure elbow bottom port axle shows a 90° angle with T-junction horizontal axle.



Connect check valve 75 to piping assembly with **arrow orientated toward bottom**.  
 Connect ejector 78 to piping assembly, positioning air supply connection on top.

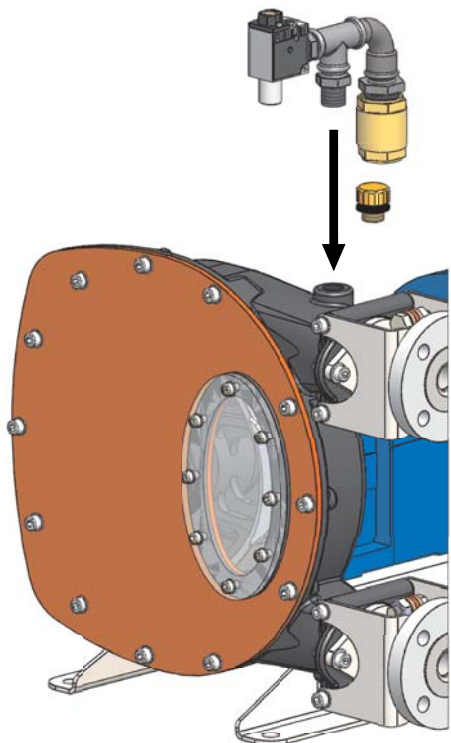
\* Loctite® is a registered trademark.

# 1. INSTALLATION (continued)

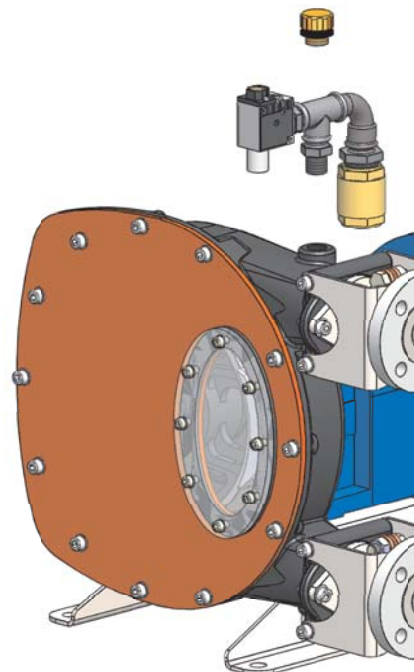
## 1.3 Vacuum kit mounting on pump

Operate with Loctite® 572\* pipe sealant or equivalent. Wait minimum 3 hours before submitting assembly to vacuum or pressure.

Ejector air connection must be positioned on top, check valve on the bottom.



Assemble complete vacuum kit on pump cover.



# 2. OPERATION

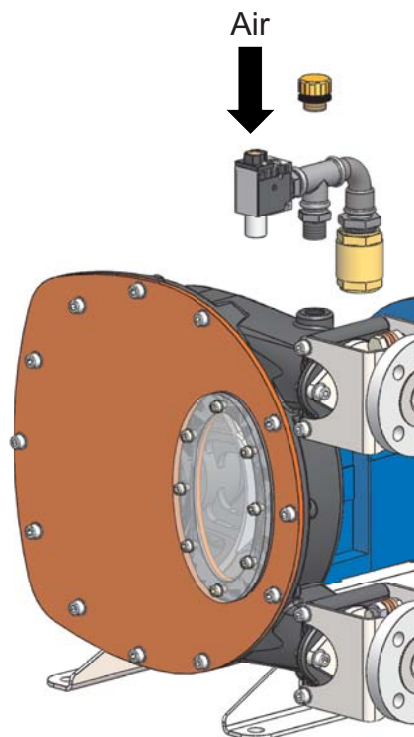
Check that ejector bottom part is not obstructed (air exhaust).

Connect air supply on ejector connection.

### REMINDER :

- Air must be filtered and non-lubricated
- Minimum pressure : 2 bar
- Optimum pressure : 4 bar
- Maximum pressure : 6 bar
- Air consumption : 67 NI/min
- Air temperature : -10 à 80°C

Optimum vacuum value may take between 10 seconds and 7 minutes to be reached depending on pump size.



\* Loctite® is a registered trademark.